



East Cottage, Merton Road, Ambrosden,
Bicester, Oxfordshire, OX25 2LZ

**East Cottage, Merton Road,
Ambrosden, Bicester,
Oxfordshire,
OX25 2LZ**

A Charming Two Bedroom Cottage situated within this Popular Village benefiting from No Onward Chain.

The property briefly comprises of Sitting Room, Kitchen/Breakfast Room, Two Double Bedrooms, Bathroom, and a Private Rear Garden, benefiting from Gas Central Heating and Double Glazed Windows.

The Village of Ambrosden is set approximately 3 miles southwest of the market town of Bicester. The Village benefits from a Public House, Post Office, Village Shop, Village Hall, Primary School, the Parish Church of St. Mary the Virgin, Hair Salon, and a Car Garage.



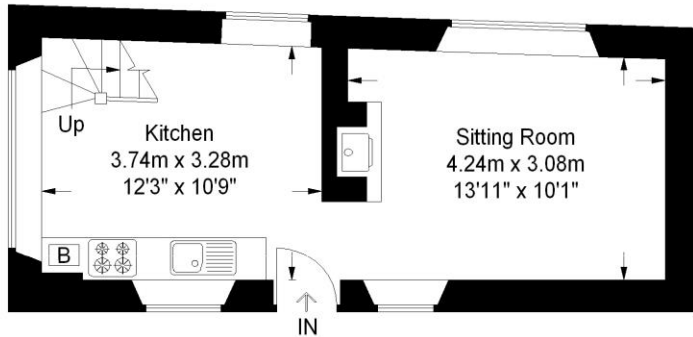


- Charming Period Cottage
- Sitting Room
- Kitchen/Breakfast Room
- Two Double Bedrooms
- Bathroom
- Private Rear Garden
- Gas Central Heating
- Double Glazed Windows
- No Onward Chain
- Village Location with Amenities
- Bicester North & Bicester Town stations are a short drive away with services to London Marylebone, London Paddington, Oxford & Birmingham.
- Junction 9 of the M40 is close by and offers commuter access to London, M25 and Birmingham.

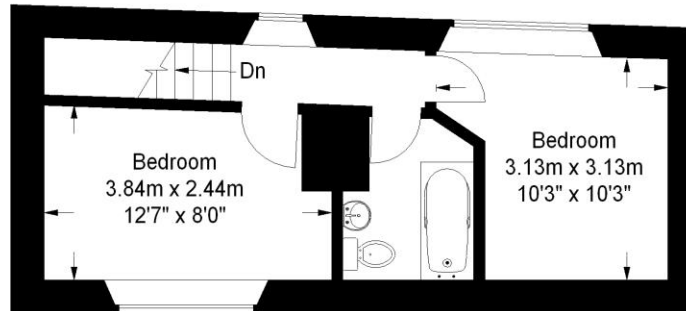
Guide Price: £250,000



East Cottage, Merton Road, Ambrosden, OX25 2LZ



Ground Floor



First Floor



Approximate Gross Internal Area
54.6 sq m / 588 sq ft

Illustration for identification purposes only,
measurements are approximate, not
to scale. © propertybox.org

Local Authority
Cherwell District Council
Band C

Tenure
Freehold

Additional Information
Bicester c. 2.5 miles
Oxford c. 15.9 miles
London c. 64.2 miles

Mark David

Market House, Market Square, Deddington, Oxfordshire, OX15 0SB

Tel: 01869 338898

Fax: 01869 338337

Email: deddington@mark-david.co.uk

www.mark-david.co.uk

Important Notice

Mark David Estate Agents for themselves and their clients give notice that:-

1. They are not authorised to make or give representation or warranty in relation to this property, either on their own behalf or on behalf of the Seller. They assume no responsibility for any statement made in these particulars. These particulars do not form part of any offer or contract and must not be relied upon as statements or representations of fact.
2. Whilst every attempt has been made to ensure the accuracy of the floorplan contained here, measurements of doors, windows, rooms and any other items are approximate and no responsibility is taken for any error, omission, or mis-statement.
3. All areas, measurements or distances are approximate. The particulars are intended for guidance only and are not necessarily comprehensive. A wide angle lens may have been used in photography. Mark David Estate Agents have not tested appliances or services and it should not be assumed that the property has all necessary planning, building regulation and other consents. Buyers must satisfy themselves with the property by inspection or otherwise.
4. Reference to any mechanical or electrical equipment does not constitute a representation that such equipment is capable of fulfilling its function and prospective Buyers must make their own enquiries.
5. They have no responsibility for any expenses or costs incurred by prospective Buyers in inspecting properties which have been sold, let or withdrawn. Applicants are advised to contact the Agent to check availability and any other information of particular importance to them, prior to inspecting the property, particularly if traveling some distance.