




Seymours




8 Clarks Farm Way Camberley, GU17 0SD £435,000

Arrange a viewing: 01276 534100

Property Details

 3 bedrooms

 2 baths

 EPC Rating B



 Blackwater

- Three double bedrooms
- Two bathrooms
- Living room
- Kitchen Breakfast room
- Cloakroom
- Utility area
- Parking for two cars
- Attractive garden
- Popular modern development

A fabulous three double bedroom home which is beautifully appointed and presented to a very high standard. Situated on this highly regarded development built by Bloor homes. The property offers a spacious Living room and modern Kitchen Breakfast/room as well as a cloakroom and utility area. Upstairs there are two double bedrooms and a bathroom on the first floor with a large master bedroom with dressing area and modern en suite shower room incorporating an Aqualisa digital shower on the second floor, The property benefits from oak veneer doors and chrome fittings throughout as well as underfloor heating to the ground floor. To the rear of the property is an attractive landscaped garden and to the front is parking for two cars. This popular development is ideally and conveniently located between Yateley and Blackwater and is an attractive setting with beautiful lakes and a children's play park. It also has access to good local schools as well as excellent shops and amenities locally.

01276 534100 / james@seymours-blackwater.co.uk

Clarks Farm Way

Approximate Gross Internal Area = 125.6 sq m / 1352 sq ft

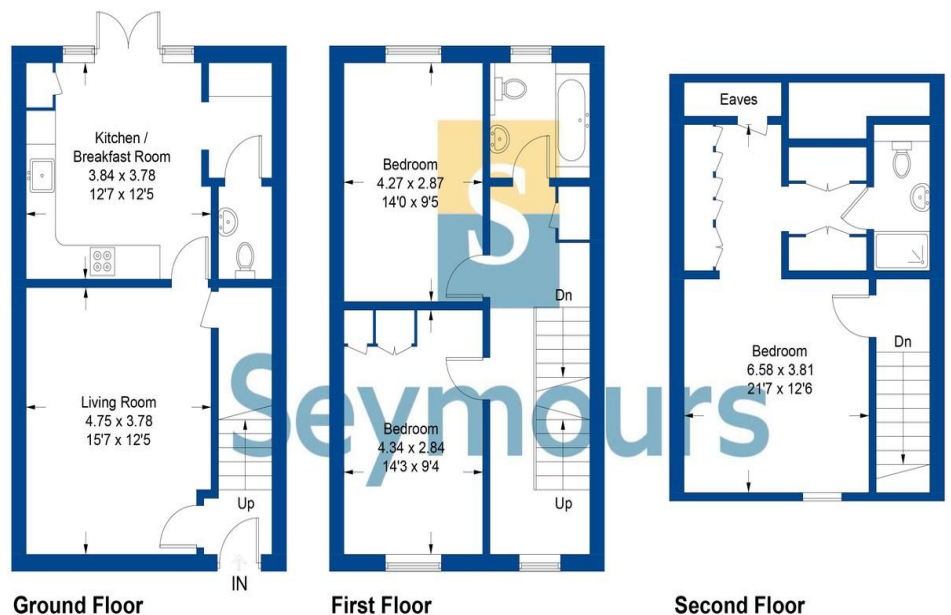


Illustration for identification purposes only, measurements are approximate, not to scale. FloorplansUsketch.com © 2020 (ID656873)