

Asking Price Of **£215,000**

tel: **01442 214151**



Westray, North End, Hemel Hempstead HERTS HP3 8TE

Clements are delighted to offer this stylish open plan recently refurbished one bedroom ground floor maisonette in this popular Northend location set close to open greenspace. The property offers a large well decorated Lounge / Kitchen area, a good sized DOUBLE bedroom, bathroom and large mainly laid to lawn communal garden. Perfect for FIRST TIME BUYERS and INVESTORS VIEWING ESSENTIAL!

- ONE BEDROOM MAISONETTE
- GROUND FLOOR
- DIRECT ACCESS TO GARDENS
- EXCELLENT DECORATIVE ORDER
- GAS CENTRAL HEATING



Property Description

Clements are delighted to offer this stylish open plan recently refurbished one bedroom ground floor maisonette in this popular North End location set close to open greenspace. The property offers a large well decorated Lounge / Kitchen area, a good sized DOUBLE bedroom, bathroom and large mainly laid to lawn communal garden.

FRONT DOOR LEADING TO:

ENTRANCE HALLWAY

Access to a large walk in cupboard and further built in cupboard, wall mounted radiator, laminate wood flooring, doors leading to:

LOUNGE/DINER

13' 4" x 13' 1" (4.06m x 3.99m)

A very well decorated spacious room with double glazed French doors to the rear, wooden flooring, a feature fireplace, wall mounted radiator, leading to :

KITCHEN

11' 3" x 6' 2" (3.43m x 1.88m)

Comprising a range of wall and floor mounted units with fitted work surfaces & inset stainless steel sink with single drainer, fitted wine rack, built in oven with gas hob and extractor hood over, plumbing & space for dishwasher and space for a fridge freezer, wooden flooring, part tiled walls, double glazed window to front.

BEDROOM

12' 4" x 11' 11" (3.76m x 3.63m)

A bright well decorated room with a double glazed window to rear, wall mounted radiator, TV point.

BATHROOM

Comprising a panel enclosed bath with mixer taps and shower attachment, pedestal wash hand basin, low level WC, frosted double glazed window to front, part tiled walls, heated towel rail, laminate wood flooring.

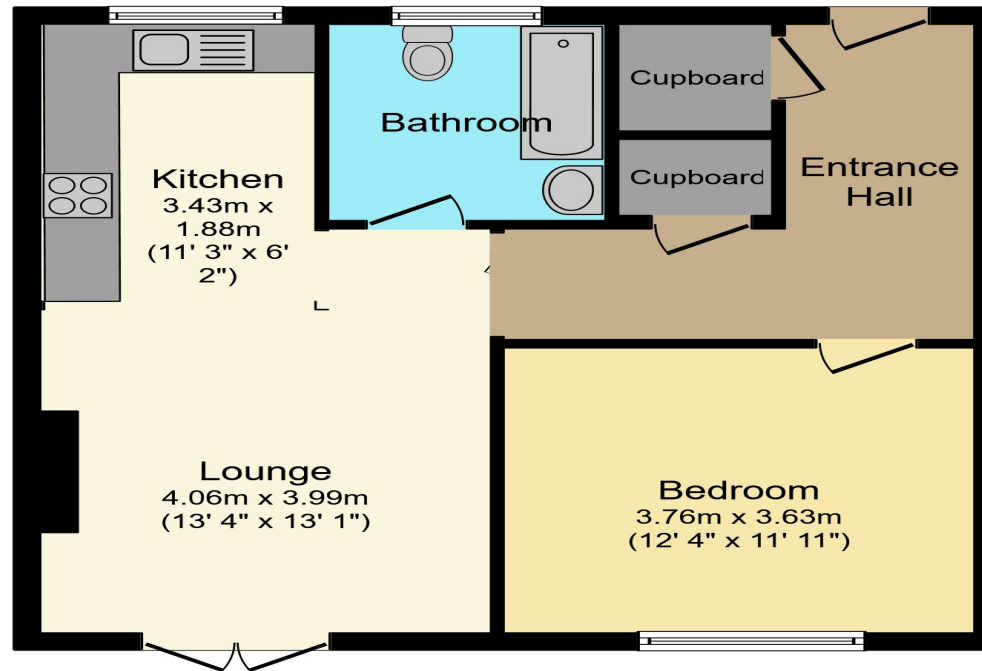
OUTSIDE

FRONT GARDEN

Laid to lawn with pathway to the front door.

COMMUNAL REAR GARDEN

Laid to lawn, fence enclosed.



Floor area 56.2 sq. m. (605 sq. ft.) approx

Total floor area 56.2 sq. m. (605 sq. ft.) approx

This plan is for illustration purposes only and may not be representative of the property. Plan not to scale.

Powered by audioagent.com



Tenure **Leasehold**

Council Tax Band

Viewing Arrangements **Strictly by appointment**

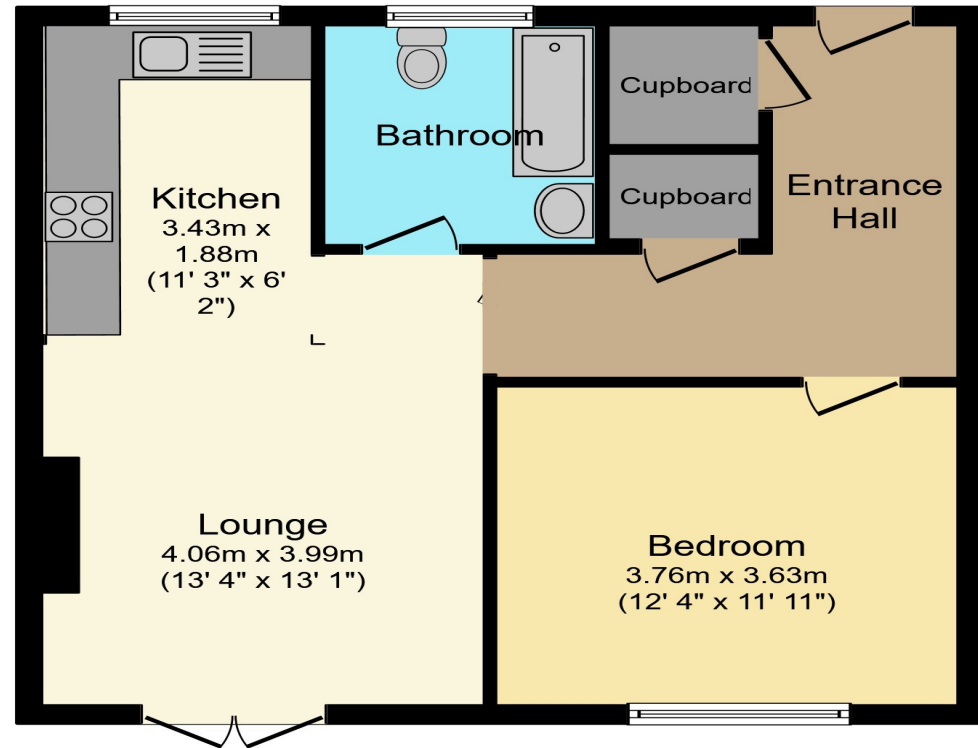
Contact Details

142 Marlowes
Hemel Hempstead
Hertfordshire
HP1 1EZ

Email: sales@clementsestateagents.co.uk

Tel: 01442 214151

www.clementsestateagents.co.uk



Floor area 56.2 sq. m. (605 sq. ft.) approx

Total floor area 56.2 sq. m. (605 sq. ft.) approx

This plan is for illustration purposes only and may not be representative of the property. Plan not to scale.

Powered by audioagent.com

Agents Note: Whilst every care has been taken to prepare these sales particulars, they are for guidance purposes only. All measurements are approximate and are for general guidance purposes only and whilst every care has been taken to ensure their accuracy, they should not be relied upon and potential buyers are advised to recheck the measurements