



Jordanhill

Plot 32, Jordanhill Park

The Development

An exceptional 3 bedroom, first floor flat within the highly regarded Jordanhill Park development by Cala homes with a private balcony. Beautifully designed and finished to the exacting standard expected by Cala Homes, this stunning apartment offers luxurious contemporary living. Cleverly designed around Jordanhill Park this bespoke Cala development is a real place of destination with its wonderful open spaces and of course its historic original buildings. Giving the feeling of living in the country, yet Jordanhill Park is only minutes from public transport, shops and the road network system.

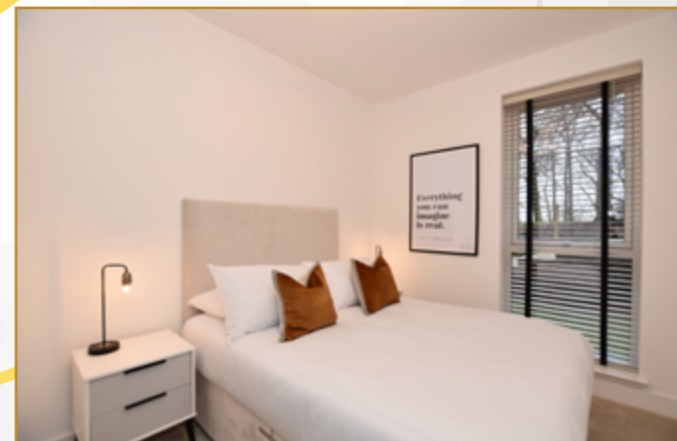


The Property

Flooded with natural light due to Cala's light and airy design there are full height sliding doors in the living/dining area that give access out onto the balcony. There is a beautifully designed quality kitchen supplied by Nolte Kuchen with stone worktops and quality Siemens integrated appliances. Each of the three bedrooms have fitted storage with the master also having an en suite shower room supplied by Laufen. The accommodation is completed by a further bathroom, with three piece suite supplied by Laufen and over bath shower.

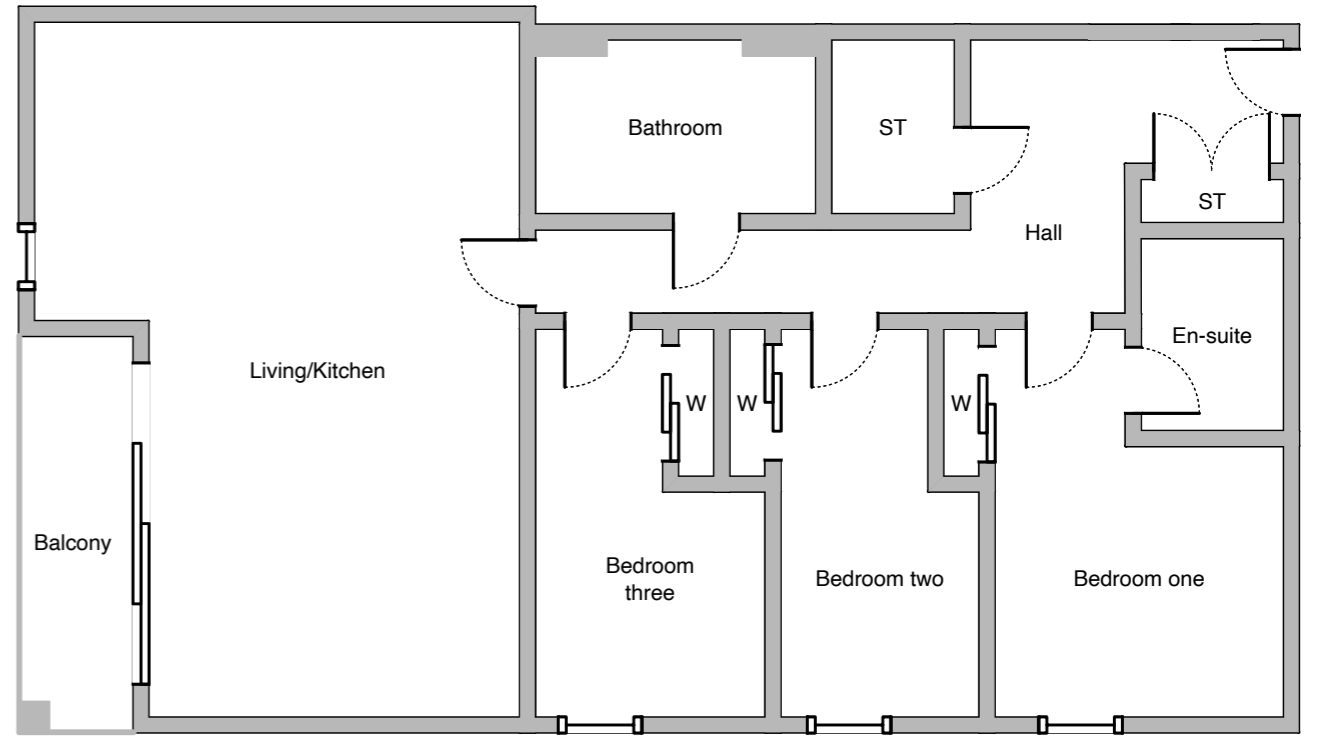
In addition, the apartment has a zoned gas underfloor heating system and state of the art double glazed windows. There is resident as well as visitor parking.







The Floorplan



The logo for Vanilla Square, featuring the words "vanilla" and "square" stacked vertically in a lowercase, sans-serif font. The text is white and set against a dark grey square background.

vanilla
square

www.vanillasquare.co.uk

Contact your award winning estate agent, Vanilla Square, for more information on this luxurious development.

11 Somerset Place, Park G3 7JT

T. 0141 229 0210 E. sales@vanillasquare.co.uk