

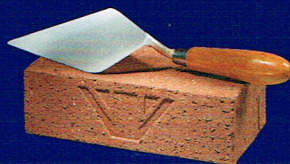
The Wren

4 bedroom detached home

Please note: The Wren housetype is being constructed with varying external elevational treatments. Ask Sales Executive for full details.

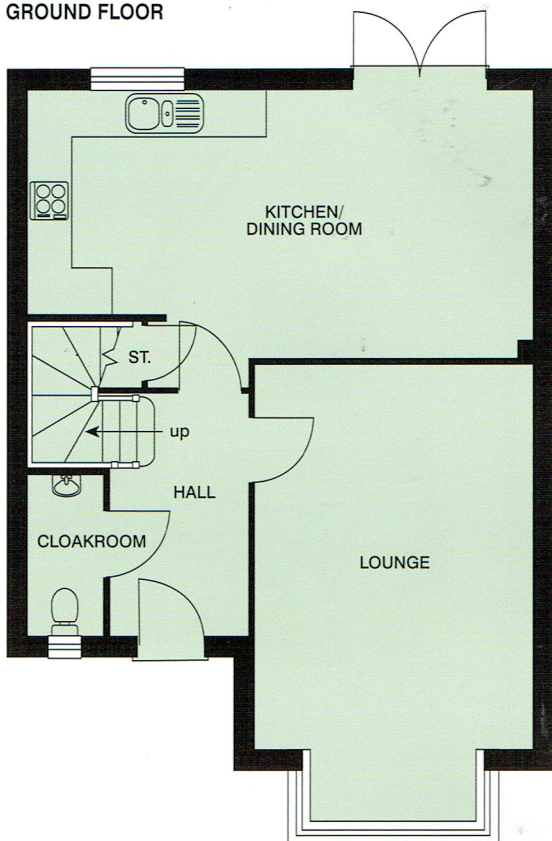


WAINHOMES
BUILDING BRITAIN'S HERITAGE

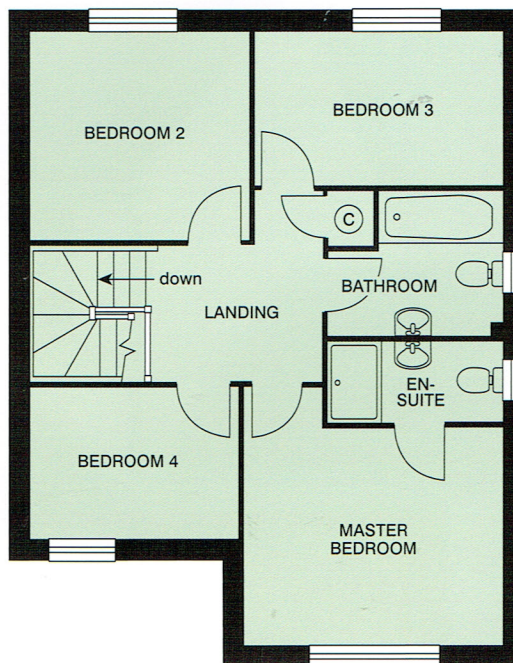


Our Symbol of Quality and Value

GROUND FLOOR



FIRST FLOOR



Lounge	5608 x 3552 max	(18'4" x 11'8" max)
Kitchen/ Dining Room	6490 x 3412 max	(21'3" x 11'2" max)
Cloakroom	2035 x 972	(6'8" x 3'2")

Master Bedroom	3498 max x 3552 max	(11'5" max x 11'8" max)
En-suite	2398 x 1195	(7'10" x 3'11")
Bedroom 2	2835 x 3000	(9'3" x 9'10")
Bedroom 3	3398 x 2093	(11'2" x 6'10")
Bedroom 4	2845 x 2035	(9'4" x 6'8")
Bathroom	2398 x 1982 max	(7'10" x 6'6" max)

Dimensions shown are internal finished dimensions which may vary as each home is built individually and the precise internal finishes may not always be the same. Please be aware that window and door positions could vary due to plot orientation. Dimensions shown exclude bay and dormer windows. It is essential to view the working drawings with our Sales Executive for plot specific detail. Enquire for further information.

Wainhomes Policy is continuous product and specification development. Every effort has been made to ensure the accuracy of the information provided in this leaflet at the date of publication but it may be subject to change without notice. Please consult with our Sales Executive to obtain the current specification. You should take appropriate steps to verify any information upon which you wish to rely. The sizes indicated are not intended to be used for carpet sizes, appliance spaces or items of furniture. Elevational treatments may vary to those shown. These particulars are intended for guidance only and their accuracy is not guaranteed. They do not constitute a contract, part of a contract or warranty. (13 January 2016)



WAINHOMES
BUILDING BRITAIN'S HERITAGE