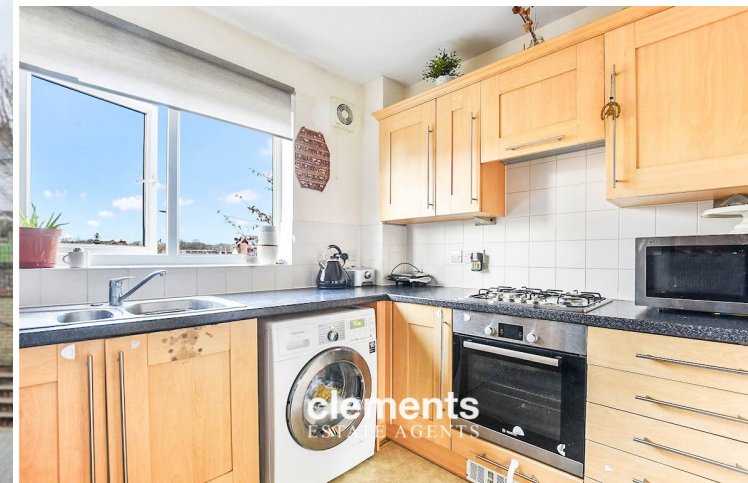


Asking Price: **£300,000**

tel: **01442 214151**



Harkness Road, Hemel Hempstead HERTS HP2 5GX

Clements Estate Agents are pleased to bring to the market this good sized two bedroom first floor modern apartment located on this popular development set in this convenient Old Town location. The property offers spacious room sizes, good decorative order with a modern kitchen and bathroom, double glazing, gas central heating, communal parking and a popular location making viewing very much recommended!

- Modern Apartment
- Two Bedrooms
- SHARED OWNERSHIP
- Top Floor
- Parking



Property Description

Clements Estate Agents are pleased to bring to the market this good sized two bedroom first floor modern apartment located on this popular development set in this convenient Old Town location. The property offers spacious room sizes, good decorative order with a modern kitchen and bathroom, double glazing, gas central heating, communal parking and a popular location making viewing very much recommended!

COMMUNAL ENTRANCE

Entry phone system with security entry door. Stairs to the first floor, front door leading to:-

ENTRANCE HALLWAY

Well decorated with various storage cupboards, wall mounted radiator, laminate wood flooring, double glazed window to side, entrance to the loft, wall mounted entry phone.

LOUNGE/DINER

15' 94" x 14' 41" (6.96m x 5.31m)

A spacious well decorated room with a double glazed window and French doors leading to a 'Juliet' style balcony to side, laminate wood flooring, two wall mounted radiators, TV point, door to:-

KITCHEN

9' 76" x 7' 58" (4.67m x 3.61m)

A modern kitchen comprising a range of wall and floor mounted units with fitted work surfaces and inset stainless steel sink with drainer and mixer taps, stainless steel oven with electric hob and extractor hood over, plumbing and space for a washing machine, space for a fridge freezer, double glazed window to side, part tiled walls.

MASTER BEDROOM

11' 85" x 11' 42" (5.51m x 4.42m)

Well decorated with a double glazed window to side, fitted carpet, wall mounted radiator.

BEDROOM TWO

10' 43" x 11' 15" (4.14m x 3.73m)

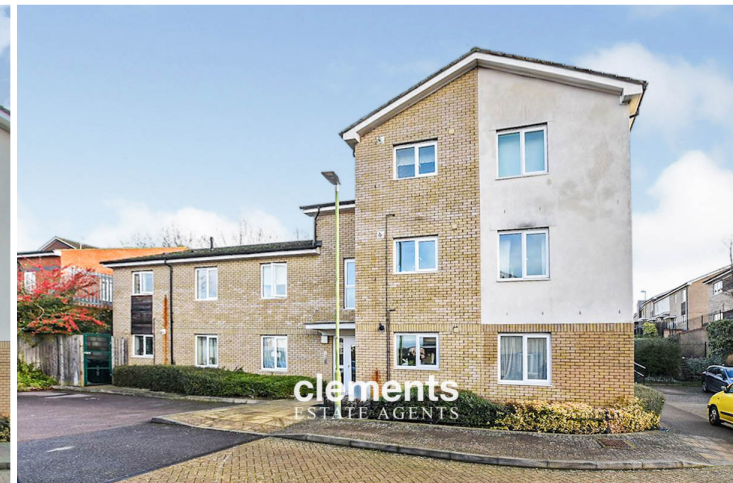
Well decorated with a double glazed window to side, fitted carpet, wall mounted radiator.

BATHROOM

Comprising a panel enclosed bath with a wall mounted shower over and fitted shower screen, low level WC, pedestal wash hand basin, tiled walls and flooring, wall mounted radiator, inset ceiling spot lights.

OUTSIDE

Communal parking and gardens



Tenure **Leasehold**

Council Tax Band

Viewing Arrangements **Strictly by appointment**

Contact Details

142 Marlowes

Hemel Hempstead

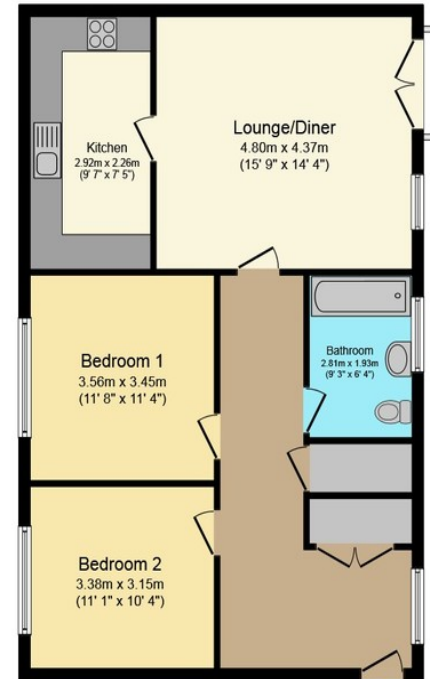
Hertfordshire

HP1 1EZ

Email: sales@clementsestateagents.co.uk

Tel: 01442 214151

www.clementsestateagents.co.uk



First Floor Plan

Floor area 80.7 sq. m. (869 sq. ft.) approx

Total floor area 80.7 sq. m. (869 sq. ft.) approx

This Floor Plan is for illustration purposes only and may not be representative of the property. The position and size of doors, windows and other features are approximate. Unauthorized reproduction prohibited. © PropertyBOX

Agents Note: Whilst every care has been taken to prepare these sales particulars, they are for guidance purposes only. All measurements are approximate and are for general guidance purposes only and whilst every care has been taken to ensure their accuracy, they should not be relied upon and potential buyers are advised to recheck the measurements