

GARRETT MANSIONS

—
WEST END GATE

<https://qinvestments.london/>

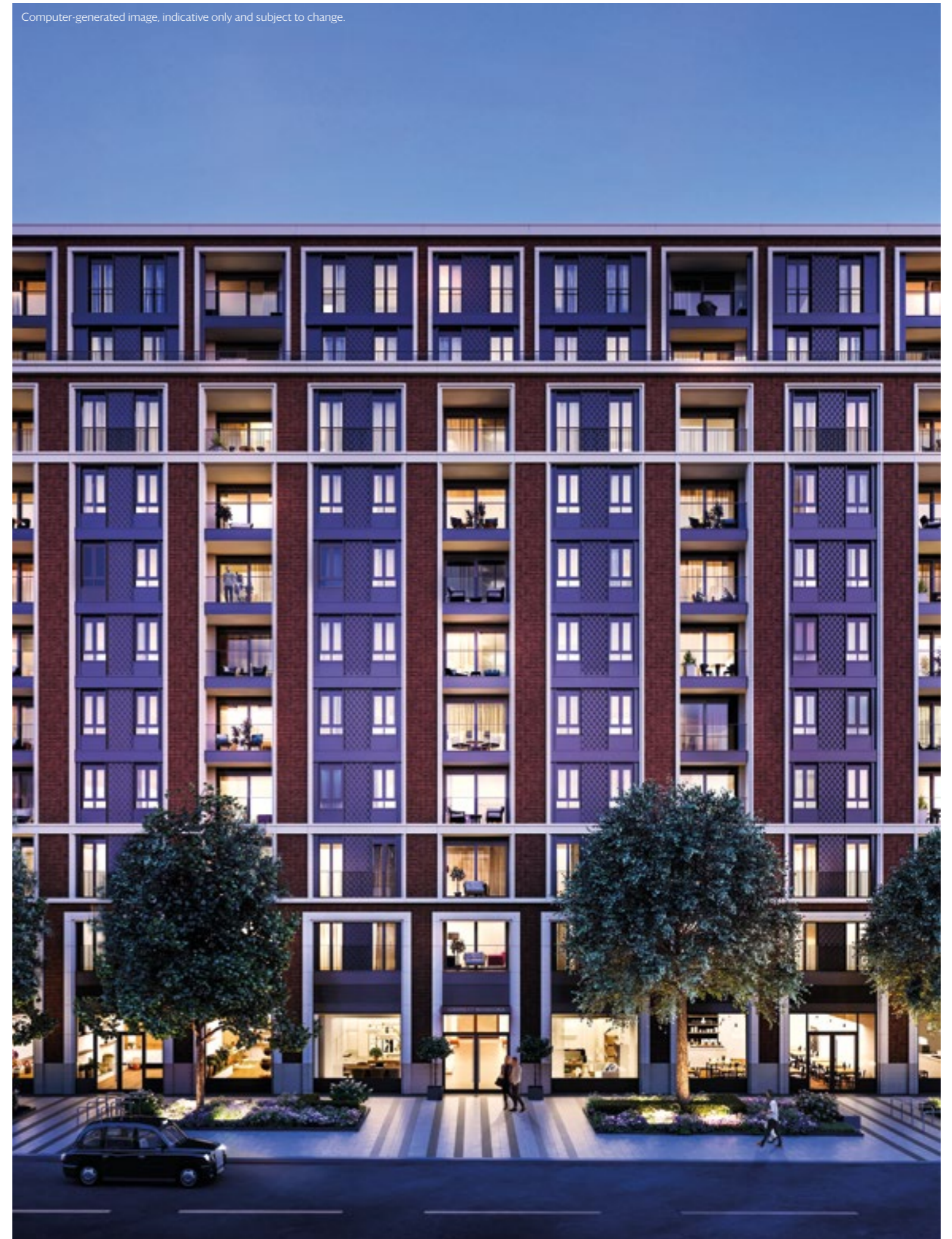
The beautifully crafted, innovative architecture of Garrett Mansions captures the spirit and character of nearby period buildings, reinterpreting the values of mansion block living into homes designed for the 21st century.

Garrett Mansions is a contemporary interpretation of traditional metropolitan mansion block living. Designed with luxury, grandeur and quality of craft in mind, the mansion block is perfectly positioned around West End Gate's landscaped residents' gardens. In addition, residents will enjoy access to the West End Gate concierge, gym and swimming pool, located in Westmark.

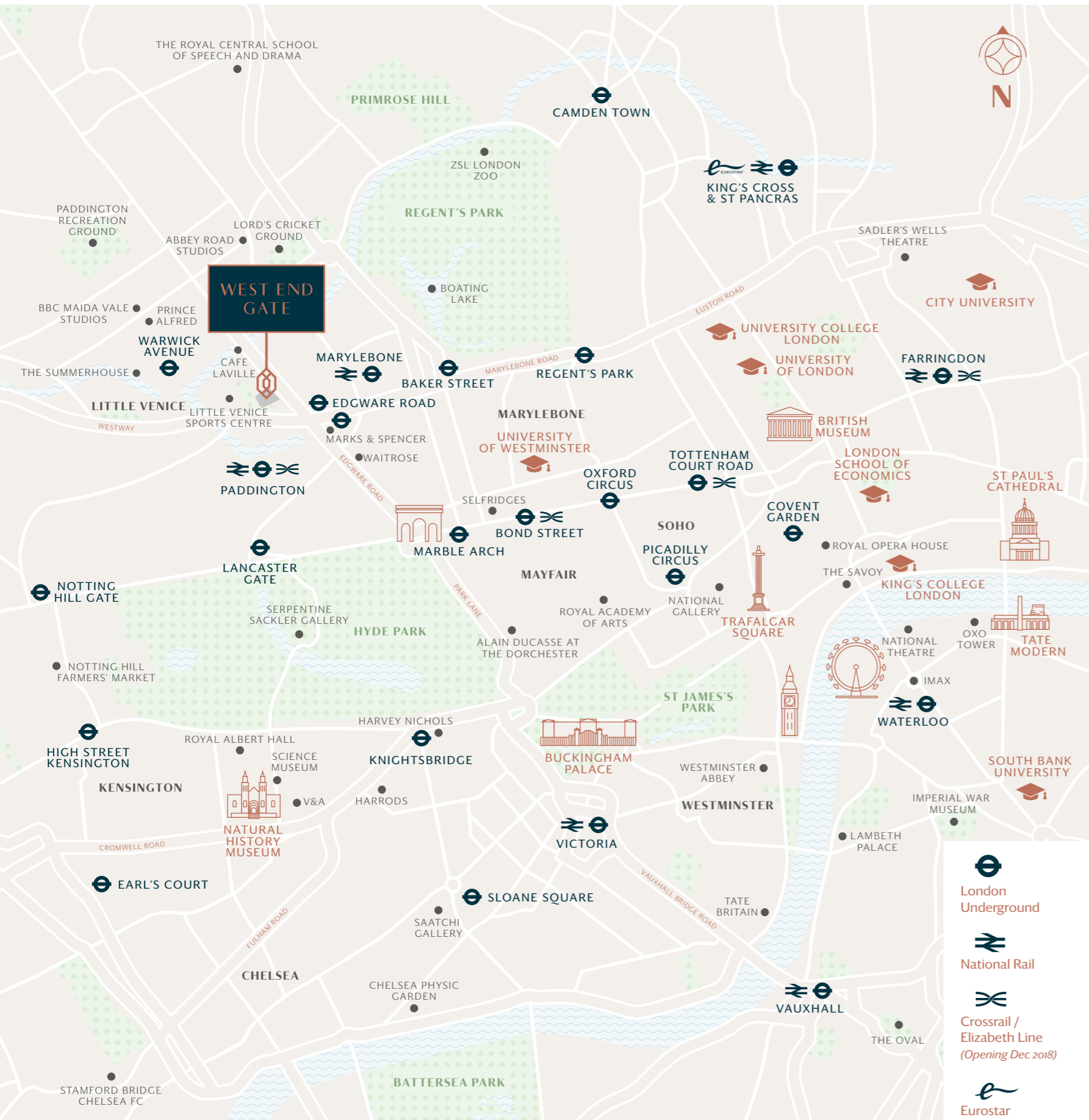
Here is a contemporary residence, with all the simple elegance and charm of classic London.

A reinterpretation of classic London heritage

Computer-generated image, indicative only and subject to change.



Perfectly positioned for the best of London



| Walk | Underground & Bus | Road | Rail |
|-----------------------------------|---------------------------------------|-------------------------------------|--------------------------------|
| Edgware Road Station 1 min | Regent's Park Station 4 mins | Bond Street 14 mins | Bond Street 3 mins |
| Marylebone Station 9 mins | Euston 14 mins | Victoria & Albert Museum 14 mins | Tottenham Court Road 4 mins |
| Paddington Station 11 mins | Selfridges 16 mins | Buckingham Palace 15 mins | Farringdon 8 mins |
| Hyde Park 15 mins | Waterloo 16 mins | Harrods 15 mins | Liverpool Street 10 mins |
| Marble Arch 15 mins | Hyde Park 18 mins | Covent Garden 16 mins | Heathrow Airport 15 mins |
| Regent's Park 16 mins | University of Westminster 19 mins | Saatchi Gallery 17 mins | Canary Wharf 17 mins |
| Marylebone High Street 19 mins | London School of Economics 24 mins | King's Cross St Pancras 20 mins | Old Street 30 mins |

Map is not to scale and shows approximate locations only. All travel times are approximate and taken from www.tfl.gov.uk, walkit.com, google.co.uk/maps and thetrainline.com. Train and bus times represent peak journey times. Underground travel from Edgware Road Station. Rail travel from Paddington Station. Crossrail times valid from December 2018. Computer-generated image, indicative only and subject to planning.

Welcome to the neighbourhood

West End Gate is positioned between the tranquil waterways of Little Venice and the stylish mansions of Marylebone. Live in an area renowned for its timeless charm and refined lifestyle, a destination long established as a desirable place to live.



01



02

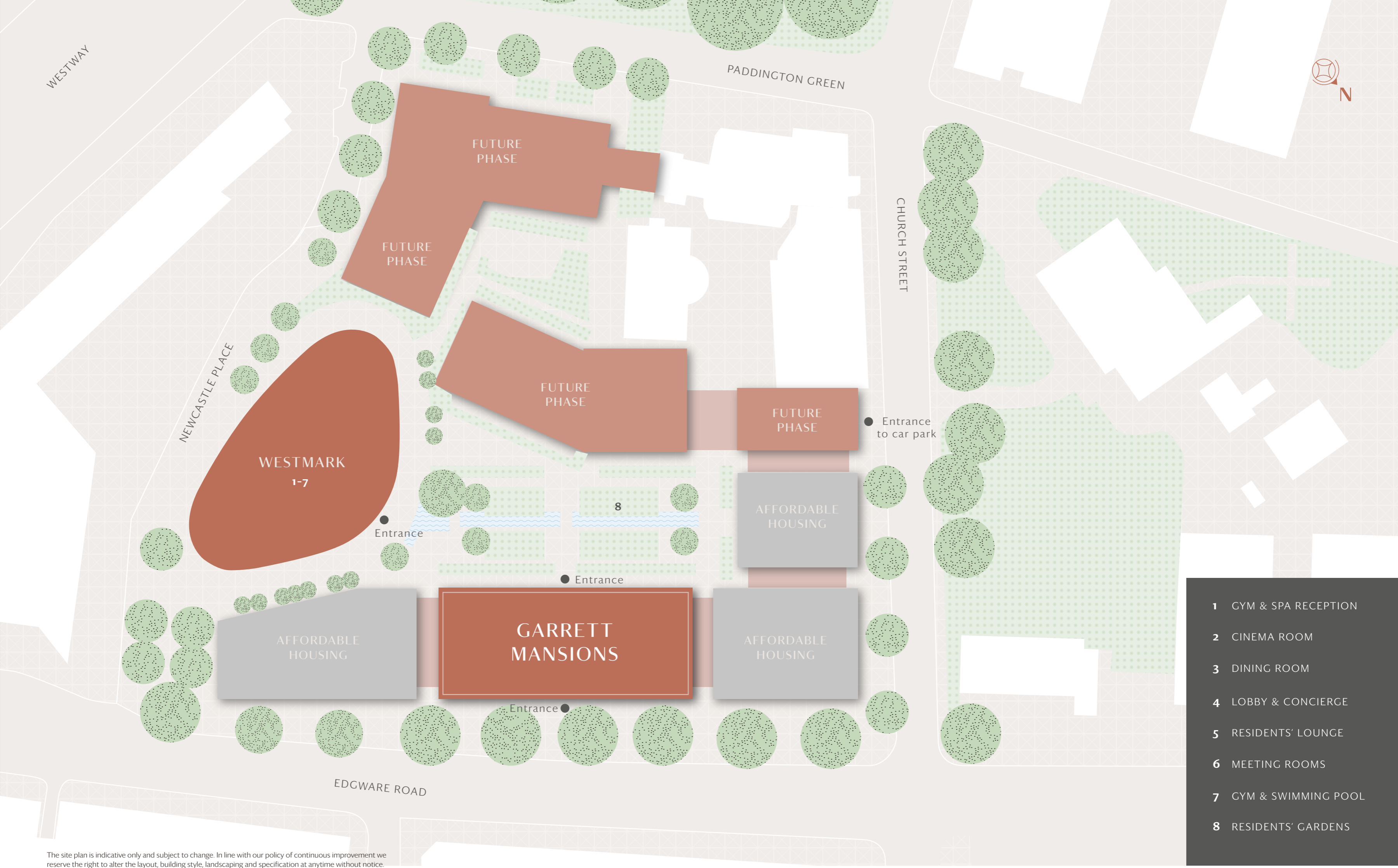


03



04

- 01 Café Lavielle,
453 Edgware Rd W2.
- 02 Chiltern Street W1.
- 03 The Serpentine Bridge,
Kensington Gardens.
- 04 Fischer's, Marylebone
High Street.



- 1 GYM & SPA RECEPTION
- 2 CINEMA ROOM
- 3 DINING ROOM
- 4 LOBBY & CONCIERGE
- 5 RESIDENTS' LOUNGE
- 6 MEETING ROOMS
- 7 GYM & SWIMMING POOL
- 8 RESIDENTS' GARDENS

The site plan is indicative only and subject to change. In line with our policy of continuous improvement we reserve the right to alter the layout, building style, landscaping and specification at anytime without notice.





Residents' garden

Computer-generated images, indicative only and subject to change.

An oasis of urban calm

Escape the bustle of city life by retreating into your beautifully landscaped private garden. Framed by strands of greenery, a linear water feature flows through the square, tapering into a small cascade. Ornamental water lilies and thoughtful landscaping create a sense of refined simplicity.

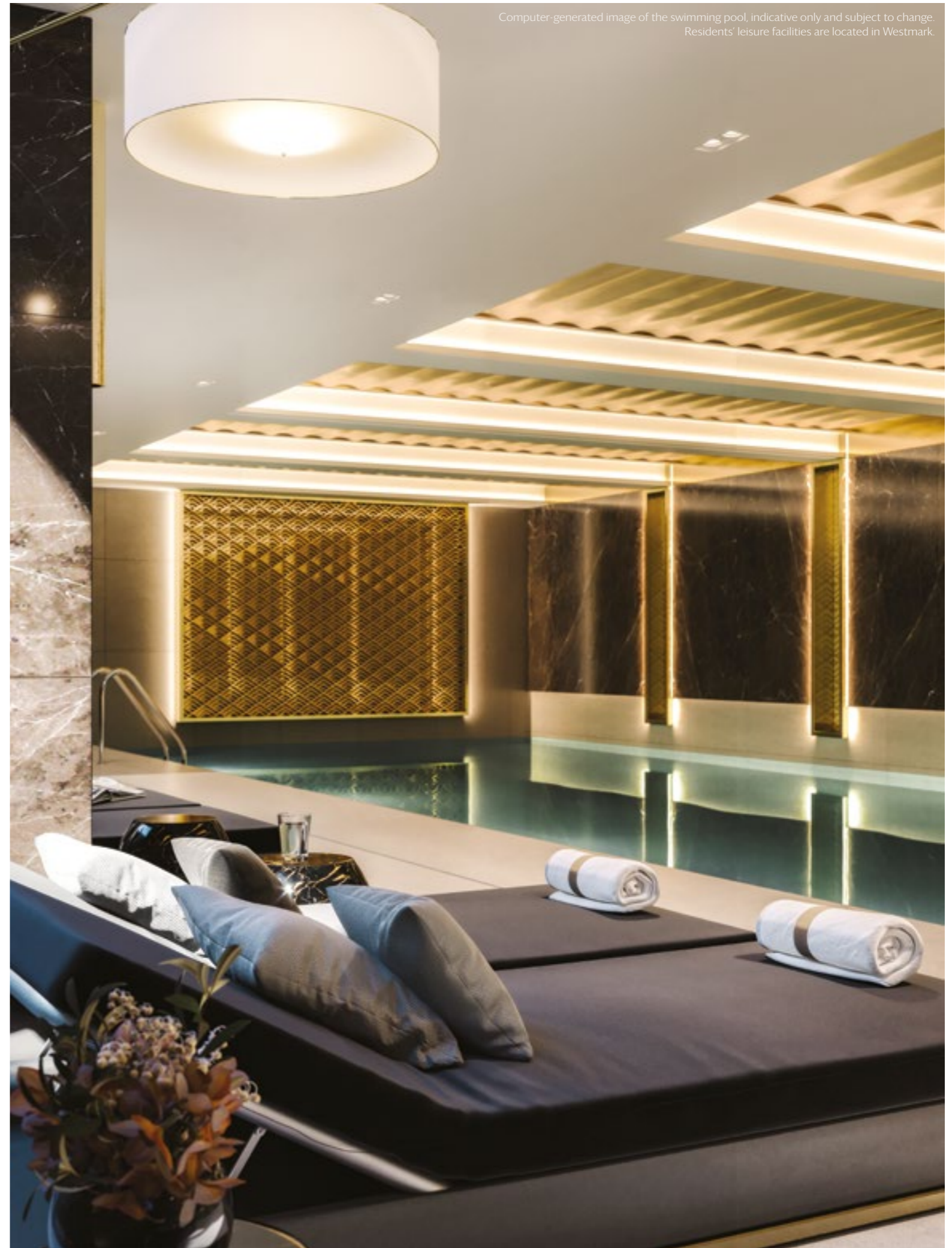


New plaza on Edgware Road



Residents' garden

Refresh and renew in state-of-the-art facilities



Computer-generated image of the swimming pool, indicative only and subject to change.
Residents' leisure facilities are located in Westmark.



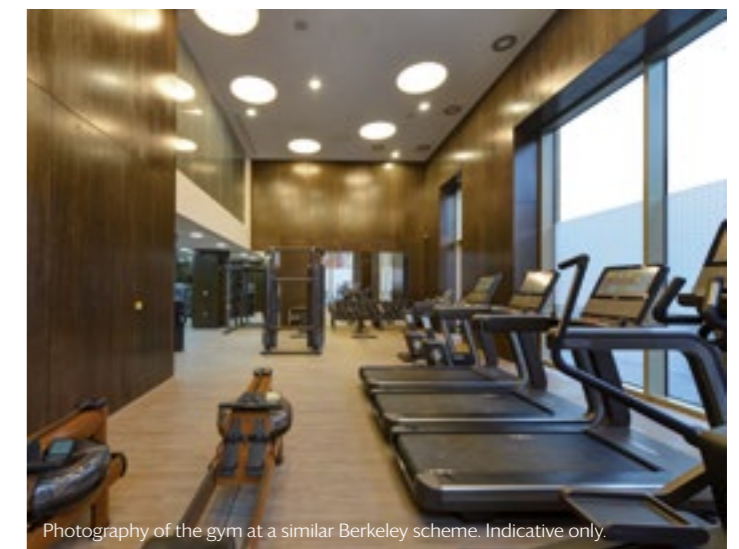
Swimming pool

Computer-generated image, indicative only and subject to change. Residents' leisure facilities are located in Westmark.

Wellness & Relaxation

The state-of-the-art wellness suite provides the perfect place to unwind after a day's work.

You'll find an expansive swimming pool, a steam room, sauna and treatment suite offering a wealth of cutting-edge services for beauty and relaxation. The elegantly designed gym is made to fulfil every possible need, with personal trainers on hand to craft bespoke fitness programmes.



Photography of the gym at a similar Berkeley scheme. Indicative only.



Photography of the changing room at a similar Berkeley scheme. Indicative only.

Entertainment & Fine Dining

Available to book at the concierge, the private dining room offers ample space to entertain guests. It features views across the landscaped garden, as well as a kitchen where you or your caterers can create a culinary masterpiece. Next door, the private cinema room has everything you need for a night of entertainment.



Private dining room. Residents' leisure facilities are located in Westmark.



Photography of the screening room at a similar Berkeley scheme. Indicative only.



Garrett Mansions Residents' Lobby

Computer-generated images, indicative only and subject to change.

Enjoy beautifully
crafted interiors

Computer-generated image representative of a 3 bedroom apartment, indicative only and subject to change.











Specification

Kitchen

Bespoke custom fitted cabinets

Composite stone work surfaces

Stone effect porcelain splash back

Under-mounted single or double bowl sink and worktop with carved drainer grooves

Single lever mixer tap with swivel spout

Engineered timber flooring to match living space

Pull-out pan and cutlery drawers to selected apartments in 2 and 3 bed units

Fully integrated appliances including a hob and a single oven with pyrolytic cleaning

Dishwasher, fridge freezer and washer dryer (washer dryer typically located in hallway cupboard)

Chilled wine/drinks cabinet to selected apartments

Bathrooms

White enamelled steel bath in en-suite; large walk-in shower in family bathroom

Frameless glass shower screens to both showers and baths with overhead showers

Overhead and hand-held shower in both bathrooms (some over bath)

Large format tiles to selected walls and all floors with feature walls to bath and shower zones

White ceramic wall mounted WC with soft closing seat and dual flush

White ceramic wall mounted basin set into feature base

Chrome deck mounted basin mixer spout and controls

Thermostatically controlled mixer and 2 way control for en-suite shower and 3 way control for bath

Heated rail and clothes hooks in all bathrooms

Bespoke wall mounted mirrored vanity unit with shaver socket and integrated feature lighting

First fix plumbing for douche option in bathrooms

Sensor activated low level lighting

Underfloor heating to master bathroom

Electrical Fittings

Low energy, low maintenance lighting scheme using LED – dimmer switches to living rooms and bedrooms

Under cabinet lighting to kitchen

5 amp lighting sockets for connecting table and floor lamps in reception room and bedrooms

Wiring only for motorised blinds/blind boxes to the living room where indicated

Master switch to turn all lighting off in apartment

AV Telephone and Data

Media plate at all TV locations for satellite TV, digital TV, DAB and FM radio, telephone and data services for media connectivity

Wiring only for speaker system in living/dining/kitchen, master bedroom and bedroom 2 (locations identified) for installation of speakers by customer

Wiring only for future pendant lighting by purchaser to kitchen and principal reception room where indicated. Patterning to ceiling locations

Heating/Cooling

Independent thermostatically controlled comfort cooling and heating via fan cooling unit multi-room system in all living rooms and bedrooms

Whole house ventilation system incorporating heat recovery

Interior Finishes

Lacquered entrance door

Solid internal painted doors including hallway cupboards and to laundry cupboards off bathrooms/shower room

Fitted wardrobes to master bedrooms, internal fittings include a combination of rails, shelves, drawers and integrated lighting – door finish laquered or equal/mirror

Full height doors throughout

Engineered timber floor in reception room, hallway and kitchen

Carpet to bedroom floors

Balconies/Terraces

Metal railings or glass balconies to selected apartments

Decking and low level lighting to external balconies

Porcelain flooring and low level lighting to all inset balconies

Fire/Security

Video entry system viewed by individual apartment handset/screen

Power and telephone point provided to all apartments for wireless intruder alarm to be fitted at a later date by purchaser

All apartments provided with mains supply smoke detectors, heat detectors and fitted with domestic sprinkler system (where required by regulation)

Multi-point locking and spy hole to apartment entrance doors

Hardwired doorbell to all apartments

24-hour concierge service and CCTV

Peace of Mind

Spy hole to front door

Door bell

CCTV throughout scheme

999 year lease

All apartments benefit from a 10 year build warranty

Car Parking

A general right to park within the managed CCTV monitored parking area is available by separate negotiation

Lifts

Tiled floors, mirrors and panelling to match communal corridor finishes

Passenger lift(s) serve each core and all levels. Direct access to underground parking level

Interior Designed Entrance Lobby

Glass doors to main entrance

Reception desk (Concierge located in Westmark Tower)

Feature floor and wall finishes

Feature lighting

Communal letterbox facility to each entrance lobby

Parcel store at parcel desk

Lift Lobbies/Communal Hallways

Carpet floor finishes and wall covering to selected lift lobby walls, walls generally painted to podium and levels above

Tiled floors and painted walls to car park levels

Residents Leisure Suite

Bespoke swimming pool

Sauna and steam room facilities

Gym facilities for personal training

Your attention is drawn to the fact that it may not be possible to provide the branded products as referred to in the specification. In such cases, a similar alternative will be provided. Berkeley Homes reserves the right to make these changes as required. A number of choices and options are available to personalise your home. Choices and options are subject to timeframes, availability and change.

Floorplans

Apartment Locator

| Type | Apartment | Level | Total area (Sq m) | Total area (Sq ft) | Page |
|-----------------------|--|-------|-------------------|--------------------|------|
| One Bedroom | | | | | |
| A | 3.0.2 | 0 | 53.60 | 576.93 | 34 |
| B | 3.0.3 | 0 | 50.48 | 543.40 | 35 |
| C | 3.0.1*, 3.0.4 | 0 | 57.38 | 617.65 | 36 |
| E | 3.5.2, 3.6.2, 3.7.2, 3.8.2 | 5-8 | 50.34 | 541.82 | 37 |
| G | 3.5.4, 3.6.4, 3.7.4, 3.8.4 | 5-8 | 50.92 | 548.15 | 38 |
| I | 3.5.7, 3.5.8*, 3.6.7, 3.6.8*, 3.7.7, 3.7.8*, 3.8.7, 3.8.8* | 5-8 | 51.43 | 553.59 | 39 |
| Two Bedrooms | | | | | |
| F | 3.4.3, 3.5.3, 3.6.3, 3.7.3, 3.8.3 | 4-8 | 70.53 | 759.21 | 40 |
| H | 3.6.6, 3.6.10*, 3.7.6, 3.7.10*, 3.8.6, 3.8.10* | 6-8 | 78.03 | 839.96 | 41 |
| J | 3.5.9, 3.6.9, 3.7.9, 3.8.9 | 5-8 | 75.12 | 808.61 | 42 |
| N | 3.9.4, 3.10.4 | 9-10 | 71.49 | 769.50 | 43 |
| O | 3.9.5, 3.10.5 | 9-10 | 80.66 | 868.20 | 44 |
| P | 3.9.6, 3.10.6 | 9-10 | 79.26 | 853.15 | 45 |
| Q | 3.9.7, 3.10.7 | 9-10 | 70.34 | 757.10 | 46 |
| Three Bedrooms | | | | | |
| D | 3.4.5, 3.5.5, 3.6.5, 3.7.5, 3.8.5 | 4-8 | 94.71 | 1,019.42 | 47 |
| R | 3.5.1, 3.6.1, 3.7.1, 3.8.1 | 5-8 | 94.59 | 1,018.18 | 48 |
| K | 3.9.1, 3.10.1 | 9-10 | 95.96 | 1,032.90 | 49 |
| L | 3.9.2, 3.10.2 | 9-10 | 95.67 | 1,029.80 | 50 |
| M | 3.9.3, 3.10.3 | 9-10 | 104.12 | 1,120.70 | 51 |

*Mirrored version of floorplan shown

One Bedroom Apartment

Type A

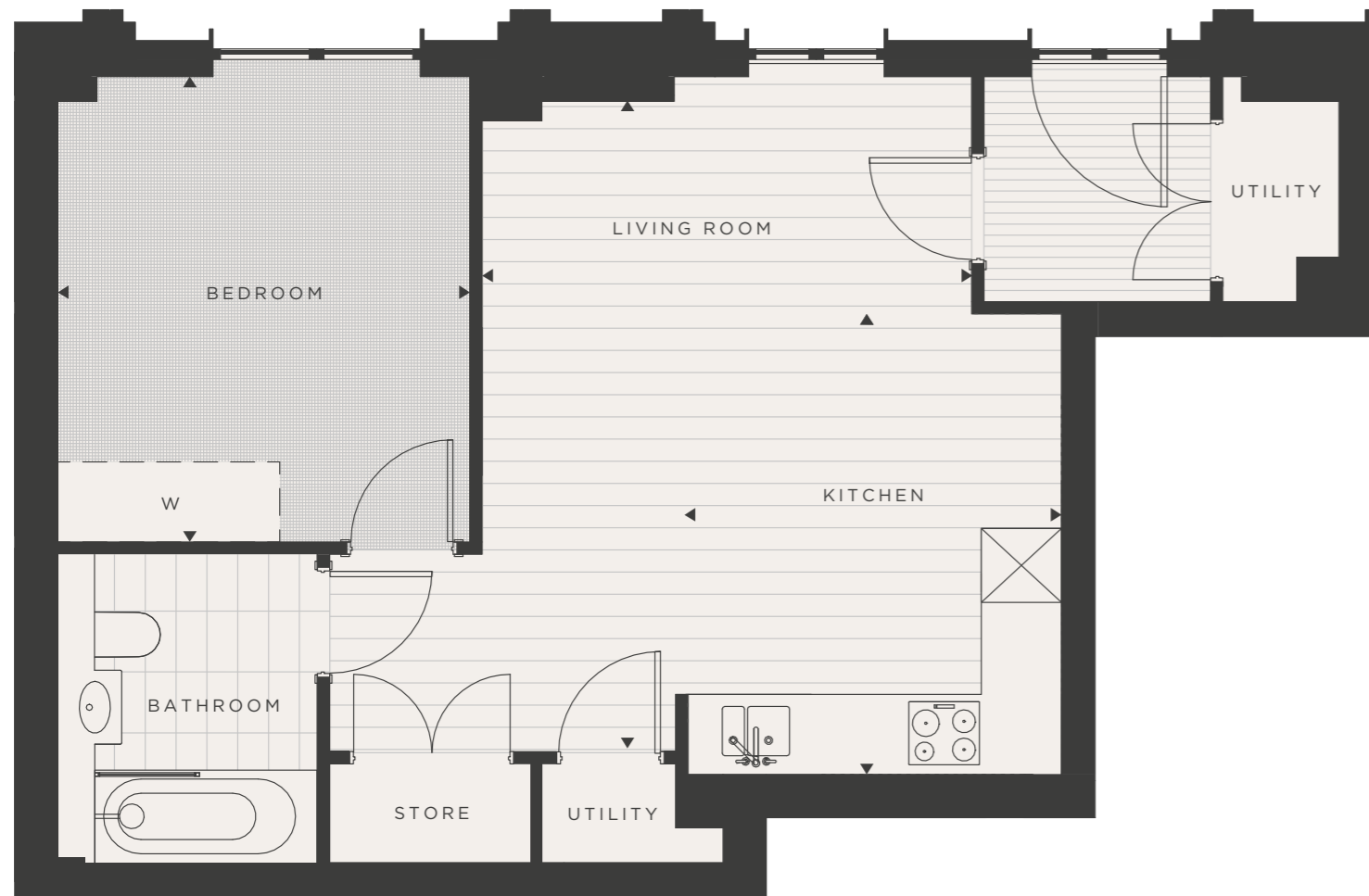


| | | |
|----------------------------|----------------------------|------------------------------|
| Apartment | 3.0.2 | |
| Level | 0 | |
| Living Room | 5.30 x 3.90m | 17'5" x 13'0" |
| Kitchen | 3.60 x 3.14m | 11'10" x 10'4" |
| Bedroom | 3.78 x 3.34m | 12'5" x 11'0" |
| Total Internal Area | 53.60 m² | 576.93 ft² |



| | |
|-----|----------|
| Key | |
| W | Wardrobe |
| C | Cupboard |
| U | Utility |

Layouts shown here are for approximate measurements only, they are not necessarily shown to scale. Exact layout and sizes of properties may vary. North arrow refers to site plan.



One Bedroom Apartment

Type B

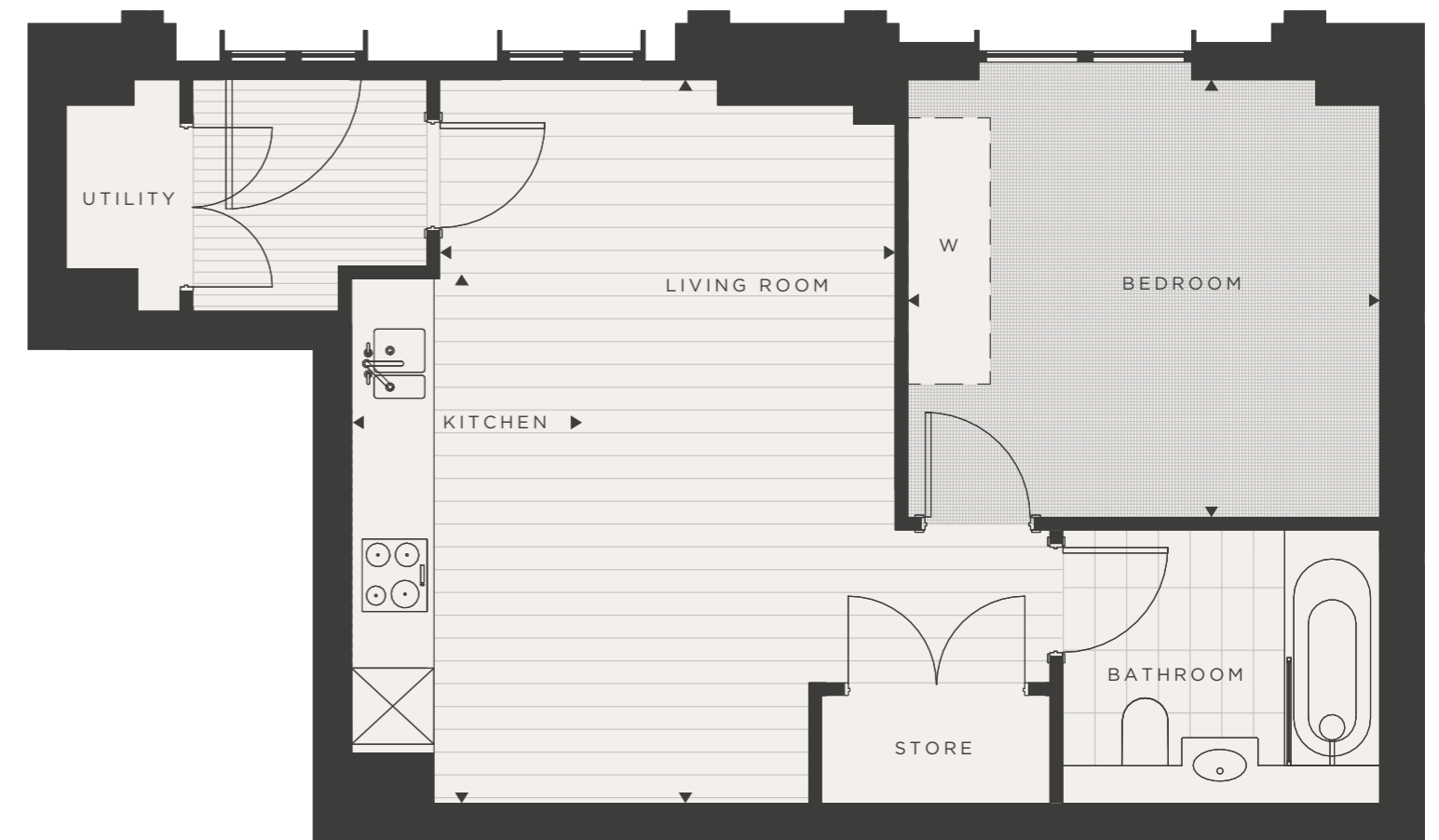


| | | |
|----------------------------|----------------------------|------------------------------|
| Apartment | 3.0.3 | |
| Level | 0 | |
| Living Room | 5.76 x 3.59m | 18'11" x 11'9" |
| Kitchen | 4.14 x 1.79m | 13'7" x 5'11" |
| Bedroom | 3.56 x 3.72m | 11'8" x 12'2" |
| Total Internal Area | 50.48 m² | 543.40 ft² |



| | |
|-----|----------|
| Key | |
| W | Wardrobe |
| C | Cupboard |
| U | Utility |

Layouts shown here are for approximate measurements only, they are not necessarily shown to scale. Exact layout and sizes of properties may vary. North arrow refers to site plan.




One Bedroom Apartment

Type C



| | | |
|----------------------------|----------------------------|------------------------------|
| Apartment | 3.0.1*, 3.0.4 | |
| Level | 0 | |
| Living Room | 6.54 x 4.01m | 21'6" x 13'2" |
| Kitchen | 2.70 x 2.25m | 8'10" x 7'5" |
| Bedroom | 3.67 x 3.80m | 12'1" x 12'6" |
| Total Internal Area | 57.38 m² | 617.65 ft² |



Key

W Wardrobe

C Cupboard

U Utility

* Mirrored version of floorplan shown

Layouts shown here are for approximate measurements only, they are not necessarily shown to scale. Exact layout and sizes of properties may vary. Bathroom and kitchen layouts differ in apartment 3.01. North arrow refers to site plan.

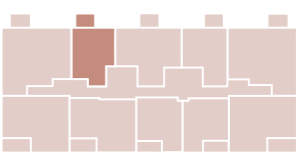


One Bedroom Apartment

Type E



| | | |
|----------------------------|----------------------------|------------------------------|
| Apartment | 3.5.2, 3.6.2, 3.7.2, 3.8.2 | |
| Level | 5, 6, 7 & 8 | |
| Living Room | 2.98 x 3.70m | 9'9" x 12'2" |
| Kitchen | 2.53 x 2.68m | 8'4" x 8'10" |
| Bedroom | 5.57 x 2.85m | 18'3" x 9'4" |
| Total Internal Area | 50.34 m² | 541.82 ft² |



Key

W Wardrobe

C Cupboard

U Utility

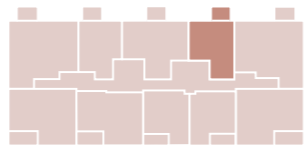
Layouts shown here are for approximate measurements only, they are not necessarily shown to scale. Exact layout and sizes of properties may vary. North arrow refers to site plan.



One Bedroom Apartment

Type G



| | | | | |
|----------------------------|----------------------------|------------------------------|--|---|
| Apartment | 3.5.4, 3.6.4, 3.7.4, 3.8.4 | |  | Key W Wardrobe C Cupboard U Utility |
| Level | 5, 6, 7 & 8 | | | |
| Kitchen / Living Room | 6.11 x 3.95m | 20'1" x 13'0" | | |
| Bedroom | 3.95 x 2.94m | 13'0" x 9'8" | | |
| Total Internal Area | 50.92 m² | 548.15 ft² | | |

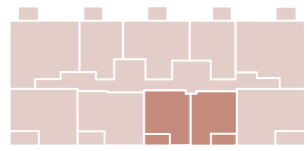
Layouts shown here are for approximate measurements only, they are not necessarily shown to scale. Exact layout and sizes of properties may vary. North arrow refers to site plan.



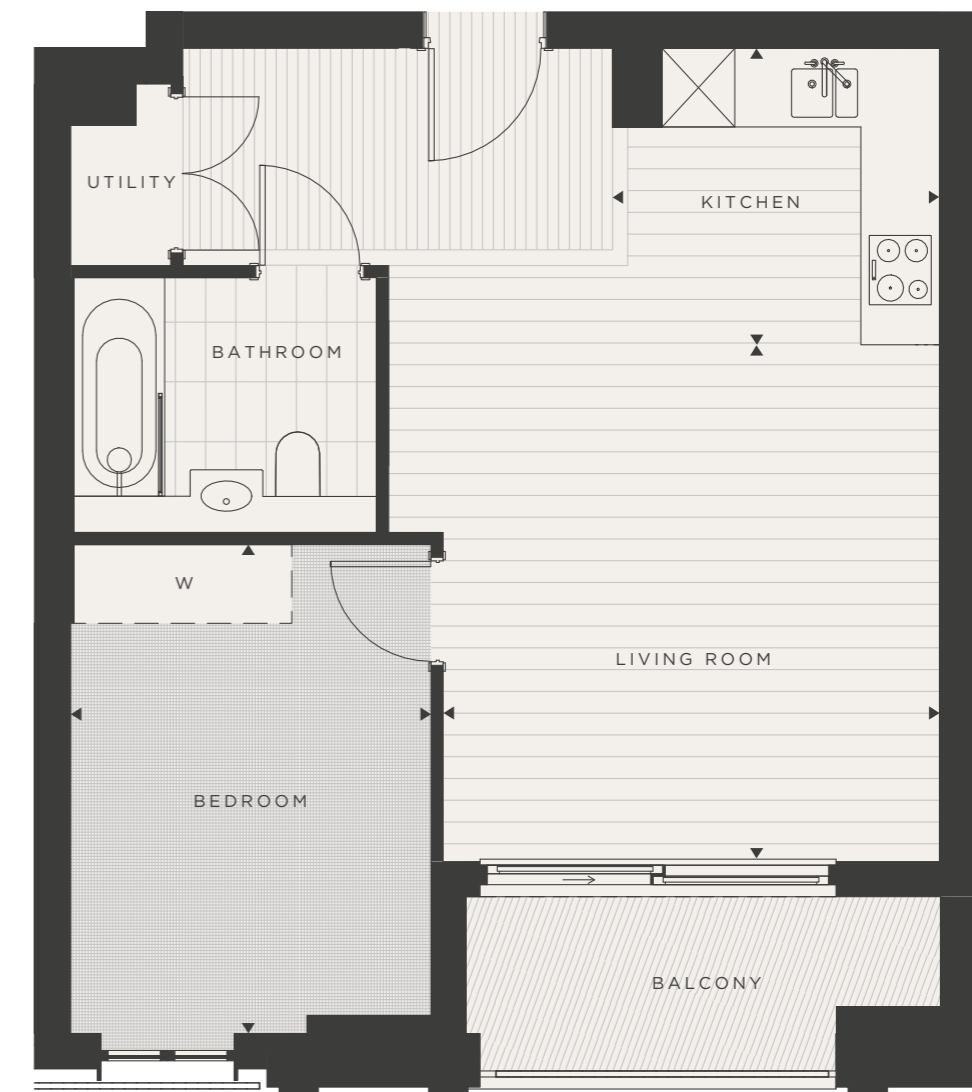
One Bedroom Apartment

Type I



| | | | | |
|----------------------------|--|------------------------------|---|---|
| Apartment | 3.5.7, 3.5.8*, 3.6.7, 3.6.8*, 3.7.7, 3.7.8*, 3.8.7, 3.8.8* | |  | Key W Wardrobe C Cupboard U Utility * Mirrored version of floor plan shown |
| Level | 5, 6, 7 & 8 | | | |
| Living Room | 4.17 x 40.5m | 13'8" x 13'3" | | |
| Kitchen | 2.53 x 2.84m | 8'4" x 9'4" | | |
| Bedroom | 4.04 x 2.95m | 13'3" x 9'8" | | |
| Total Internal Area | 51.43 m² | 553.59 ft² | | |

Layouts shown here are for approximate measurements only, they are not necessarily shown to scale. Exact layout and sizes of properties may vary. North arrow refers to site plan.

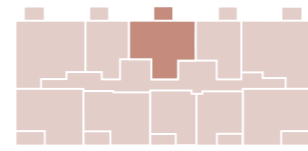


Two Bedroom Apartment

Type F



| | | |
|----------------------------|-----------------------------------|------------------------------|
| Apartment | 3.4.3, 3.5.3, 3.6.3, 3.7.3, 3.8.3 | |
| Level | 4, 5, 6, 7 & 8 | |
| Living Room | 5.06 x 4.21m | 16'7" x 13'10" |
| Kitchen | 3.65 x 1.65m | 12'0" x 5'5" |
| Bedroom 1 | 3.36 x 3.54m | 11'1" x 11'7" |
| Bedroom 2 | 3.66 x 3.26m | 12'0" x 10'8" |
| Total Internal Area | 70.53 m² | 759.21 ft² |



Key
 W Wardrobe
 C Cupboard
 U Utility

Layouts shown here are for approximate measurements only, they are not necessarily shown to scale. Exact layout and sizes of properties may vary. North arrow refers to site plan.

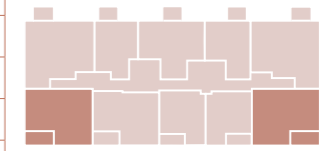


Two Bedroom Apartment

Type H



| | | |
|----------------------------|--|------------------------------|
| Apartment | 3.6.6, 3.6.10*, 3.7.6, 3.7.10*, 3.8.6, 3.8.10* | |
| Level | 6, 7 & 8 | |
| Living Room | 4.61 x 4.32m | 15'2" x 14'2" |
| Kitchen | 1.94 x 3.44m | 6'5" x 11'4" |
| Bedroom 1 | 5.79 x 2.85m | 19'0" x 9'4" |
| Bedroom 2 | 4.49 x 2.96m | 14'9" x 9'6" |
| Total Internal Area | 78.03 m² | 839.96 ft² |



Key
 W Wardrobe
 C Cupboard
 U Utility
 * Mirrored version of floorplan shown

Layouts shown here are for approximate measurements only, they are not necessarily shown to scale. Exact layout and sizes of properties may vary. North arrow refers to site plan.

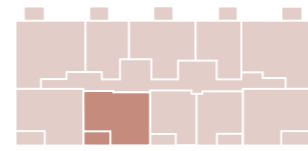


Two Bedroom Apartment

Type J



| | | |
|----------------------------|----------------------------|------------------------------|
| Apartment | 3.5.9, 3.6.9, 3.7.9, 3.8.9 | |
| Level | 5, 6, 7 & 8 | |
| Kitchen / Living Room | 6.25 x 4.09m | 20'5" x 13'4" |
| Bedroom 1 | 5.34 x 2.90m | 17'7" x 9'6" |
| Bedroom 2 | 4.04 x 3.18m | 13'3" x 10'5" |
| Total Internal Area | 75.12 m² | 808.61 ft² |



Key
 W Wardrobe
 C Cupboard
 U Utility

Layouts shown here are for approximate measurements only, they are not necessarily shown to scale. Exact layout and sizes of properties may vary. North arrow refers to site plan.

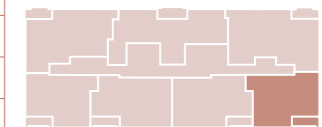


Two Bedroom Apartment

Type N



| | | |
|----------------------------|----------------------------|------------------------------|
| Apartment | 3.9.4, 3.10.4 | |
| Level | 9 & 10 | |
| Kitchen / Living Room | 6.71 x 3.28m | 22'0" x 10'7" |
| Bedroom 1 | 5.29 x 2.75m | 17'3" x 9'0" |
| Bedroom 2 | 3.15 x 3.51m | 10'3" x 11'5" |
| Total Internal Area | 71.49 m² | 769.50 ft² |



Key
 W Wardrobe
 C Cupboard
 U Utility

Layouts shown here are for approximate measurements only, they are not necessarily shown to scale. Exact layout and sizes of properties may vary. North arrow refers to site plan.



Subject to planning and change.

Two Bedroom Apartment

Type O

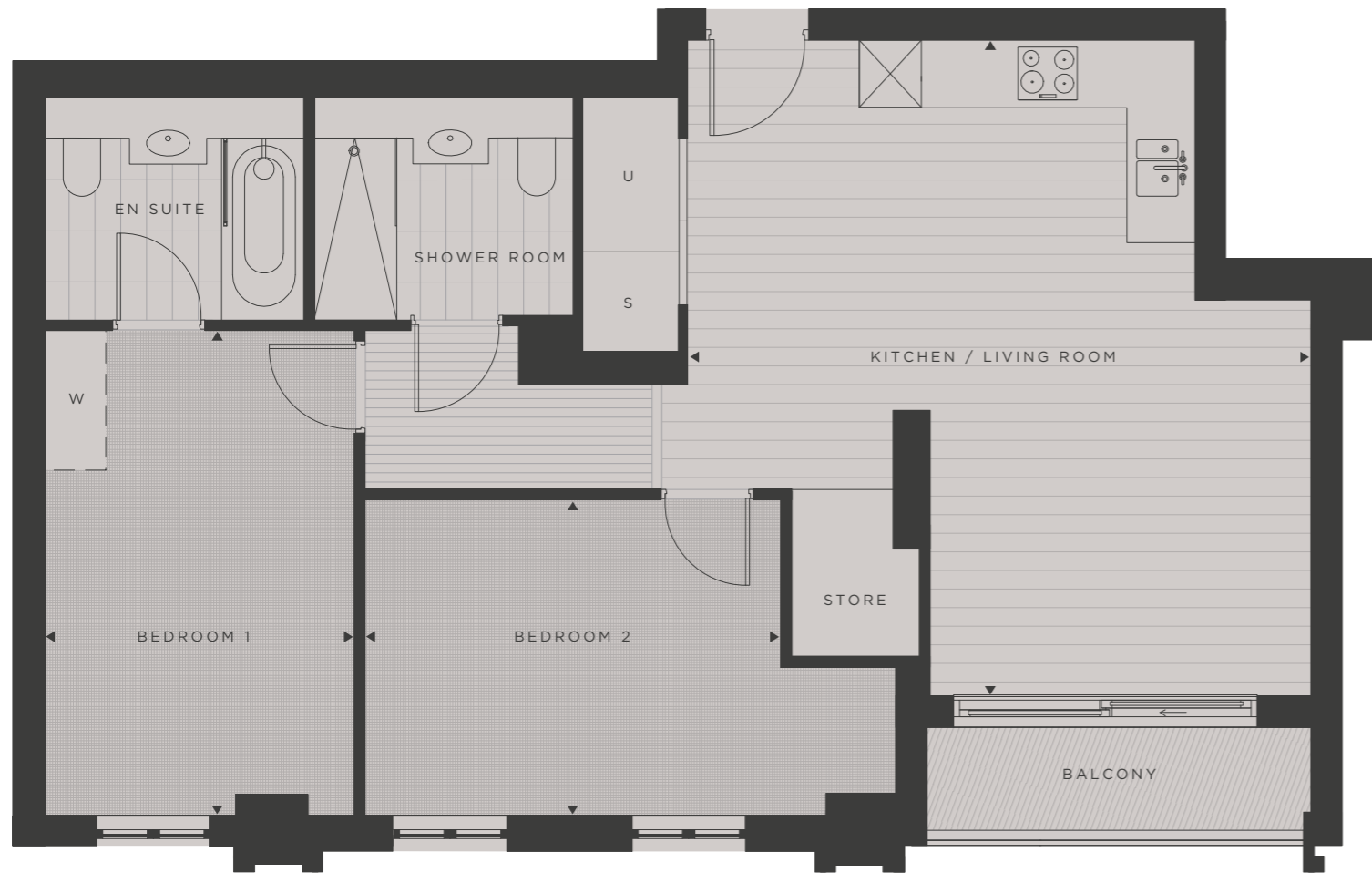


| | | |
|----------------------------|----------------------------|------------------------------|
| Apartment | 3.9.5, 3.10.5 | |
| Level | 9 & 10 | |
| Kitchen / Living Room | 3.83 x 4.91m | 12'5" x 16'1" |
| Bedroom 1 | 4.70 x 3.00m | 15'4" x 9'8" |
| Bedroom 2 | 3.06 x 4.02m | 10'0" x 13'2" |
| Total Internal Area | 80.66 m² | 868.20 ft² |



| | |
|-----|----------|
| Key | |
| W | Wardrobe |
| C | Cupboard |
| U | Utility |

Layouts shown here are for approximate measurements only, they are not necessarily shown to scale. Exact layout and sizes of properties may vary. North arrow refers to site plan.



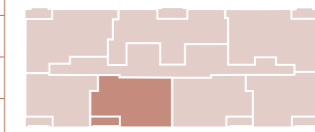
Subject to planning and change.

Two Bedroom Apartment

Type P



| | | |
|----------------------------|----------------------------|------------------------------|
| Apartment | 3.9.6, 3.10.6 | |
| Level | 9 & 10 | |
| Kitchen / Living Room | 3.87 x 5.00m | 12'7" x 16'4" |
| Bedroom 1 | 3.40 x 3.15m | 11'1" x 10'3" |
| Bedroom 2 | 2.40 x 4.63m | 7'8" x 15'2" |
| Total Internal Area | 79.26 m² | 853.15 ft² |



| | |
|-----|----------|
| Key | |
| W | Wardrobe |
| C | Cupboard |
| U | Utility |

Layouts shown here are for approximate measurements only, they are not necessarily shown to scale. Exact layout and sizes of properties may vary. North arrow refers to site plan.



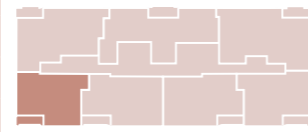
Subject to planning and change.

Two Bedroom Apartment

Type Q



| | | |
|----------------------------|----------------------------|------------------------------|
| Apartment | 3.9.7, 3.10.7 | |
| Level | 9 & 10 | |
| Kitchen / Living Room | 6.50 x 3.23m | 21'3" x 10'6" |
| Bedroom 1 | 5.24 x 2.75m | 17'2" x 9'0" |
| Bedroom 2 | 3.18 x 3.47m | 10'4" x 11'4" |
| Total Internal Area | 70.34 m² | 757.10 ft² |



| | |
|-----|----------|
| Key | |
| W | Wardrobe |
| C | Cupboard |
| U | Utility |

Layouts shown here are for approximate measurements only, they are not necessarily shown to scale. Exact layout and sizes of properties may vary. North arrow refers to site plan.



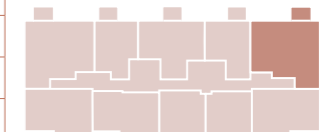
Subject to planning and change.

Three Bedroom Apartment

Type D



| | | |
|----------------------------|-----------------------------------|--------------------------------|
| Apartment | 3.4.5, 3.5.5, 3.6.5, 3.7.5, 3.8.5 | |
| Level | 4, 5, 6, 7 & 8 | |
| Living Room | 3.74 x 4.31m | 12'3" x 14'2" |
| Kitchen | 3.17 x 3.61m | 10'5" x 11'10" |
| Bedroom 1 | 5.11 x 3.01m | 16'9" x 9'11" |
| Bedroom 2 | 3.86 x 3.09m | 12'8" x 10'2" |
| Bedroom 3 | 3.49 x 3.50m | 11'5" x 11'6" |
| Total Internal Area | 94.71 m² | 1,019.42 ft² |



| | |
|-----|----------|
| Key | |
| W | Wardrobe |
| C | Cupboard |
| U | Utility |

Layouts shown here are for approximate measurements only, they are not necessarily shown to scale. Exact layout and sizes of properties may vary. North arrow refers to site plan.

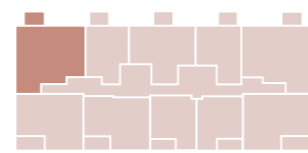


Three Bedroom Apartment

Type R



| | | |
|----------------------------|----------------------------|--------------------------------|
| Apartment | 3.5.1, 3.6.1, 3.7.1, 3.8.1 | |
| Level | 5, 6, 7 & 8 | |
| Living Room | 3.74 x 4.31m | 12'3" x 14'2" |
| Kitchen | 3.17 x 3.61m | 10'5" x 11'10" |
| Bedroom 1 | 5.11 x 3.01m | 16'9" x 9'11" |
| Bedroom 2 | 3.86 x 3.09m | 12'8" x 10'2" |
| Bedroom 3 | 3.49 x 3.50m | 11'5" x 11'6" |
| Total Internal Area | 94.59 m² | 1,018.18 ft² |



Key
 W Wardrobe
 C Cupboard
 U Utility

Layouts shown here are for approximate measurements only, they are not necessarily shown to scale. Exact layout and sizes of properties may vary. North arrow refers to site plan.



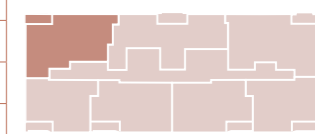
Subject to planning and change.

Three Bedroom Apartment

Type K



| | | |
|----------------------------|----------------------------|--------------------------------|
| Apartment | 3.9.1, 3.10.1 | |
| Level | 9 & 10 | |
| Kitchen / Living Room | 6.51 x 4.70m | 21'3" x 15'4" |
| Bedroom 1 | 2.85 x 4.68m | 9'3" x 15'3" |
| Bedroom 2 | 3.51 x 3.38m | 11'5" x 11'0" |
| Bedroom 3 | 3.32 x 3.60m | 10'9" x 11'8" |
| Total Internal Area | 95.96 m² | 1,032.90 ft² |



Key
 W Wardrobe
 C Cupboard
 U Utility

Layouts shown here are for approximate measurements only, they are not necessarily shown to scale. Exact layout and sizes of properties may vary. North arrow refers to site plan.

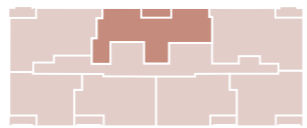


Subject to planning and change.

Three Bedroom Apartment

Type L



| | | | | |
|----------------------------|----------------------------|--------------------------------|--|---|
| Apartment | 3.9.2, 3.10.2 | |  | Key W Wardrobe C Cupboard U Utility |
| Level | 9 & 10 | | | |
| Kitchen / Living Room | 7.45 x 4.84m | 24'4" x 15'8" | | |
| Bedroom 1 | 3.24 x 5.64m | 10'6" x 18'5" | | |
| Bedroom 2 | 3.46 x 3.71m | 11'3" x 12'1" | | |
| Bedroom 3 | 4.84 x 2.75m | 15'8" x 9'0" | | |
| Total Internal Area | 95.67 m² | 1,029.80 ft² | | |

Layouts shown here are for approximate measurements only, they are not necessarily shown to scale. Exact layout and sizes of properties may vary. North arrow refers to site plan.

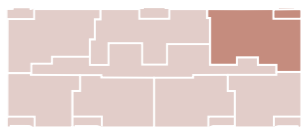


Subject to planning and change.

Three Bedroom Apartment

Type M



| | | | | |
|----------------------------|-----------------------------|--------------------------------|---|---|
| Apartment | 3.9.3, 3.10.3 | |  | Key W Wardrobe C Cupboard U Utility |
| Level | 9 & 10 | | | |
| Kitchen / Living Room | 4.68 x 6.71m | 15'3" x 22'0" | | |
| Bedroom 1 | 7.84 x 3.09m | 25'7" x 10'0" | | |
| Bedroom 2 | 3.38 x 3.65m | 11'0" x 12'0" | | |
| Bedroom 3 | 3.64 x 3.48m | 12'0" x 11'4" | | |
| Total Internal Area | 104.12 m² | 1,120.70 ft² | | |

Layouts shown here are for approximate measurements only, they are not necessarily shown to scale. Exact layout and sizes of properties may vary. North arrow refers to site plan.



Subject to planning and change.

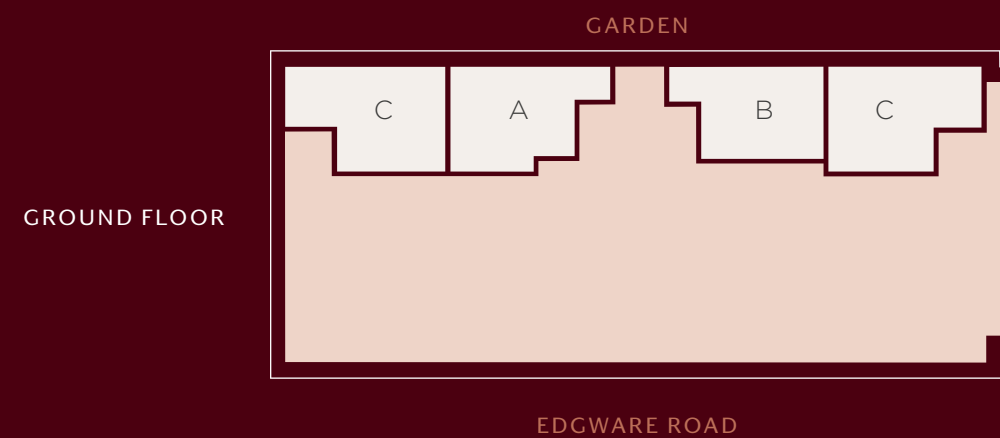
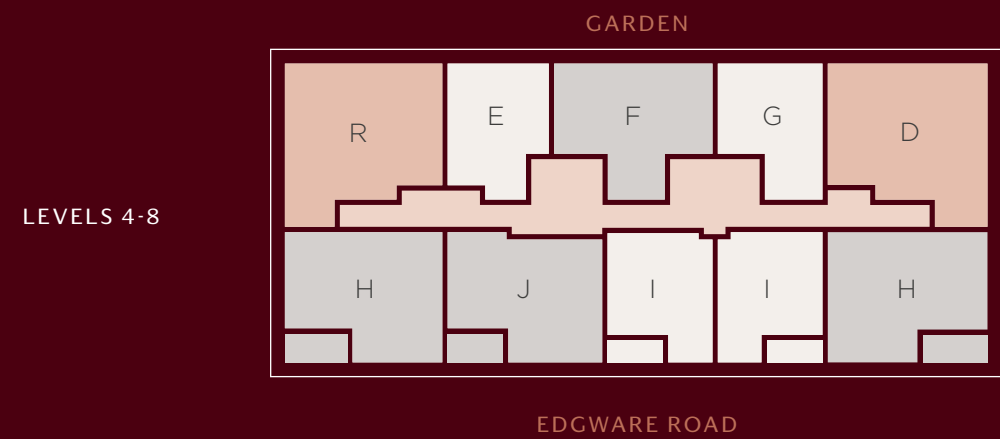
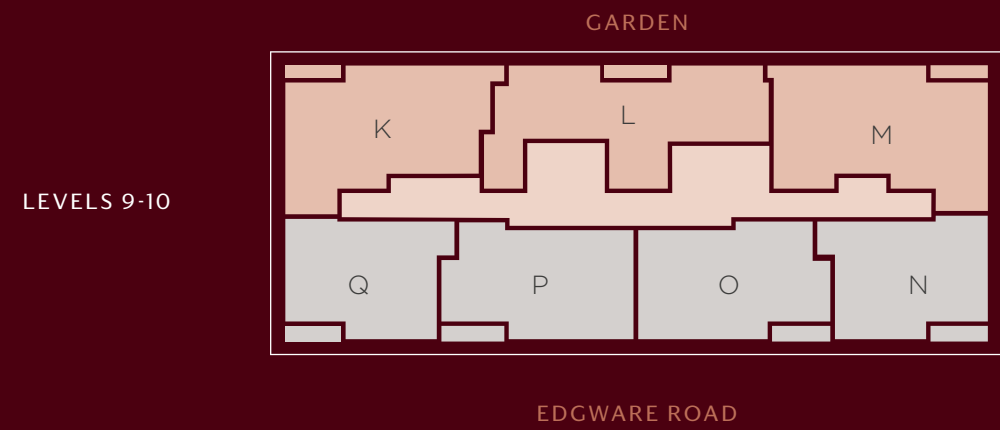
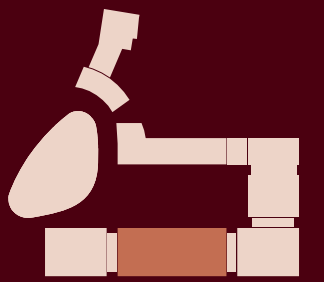


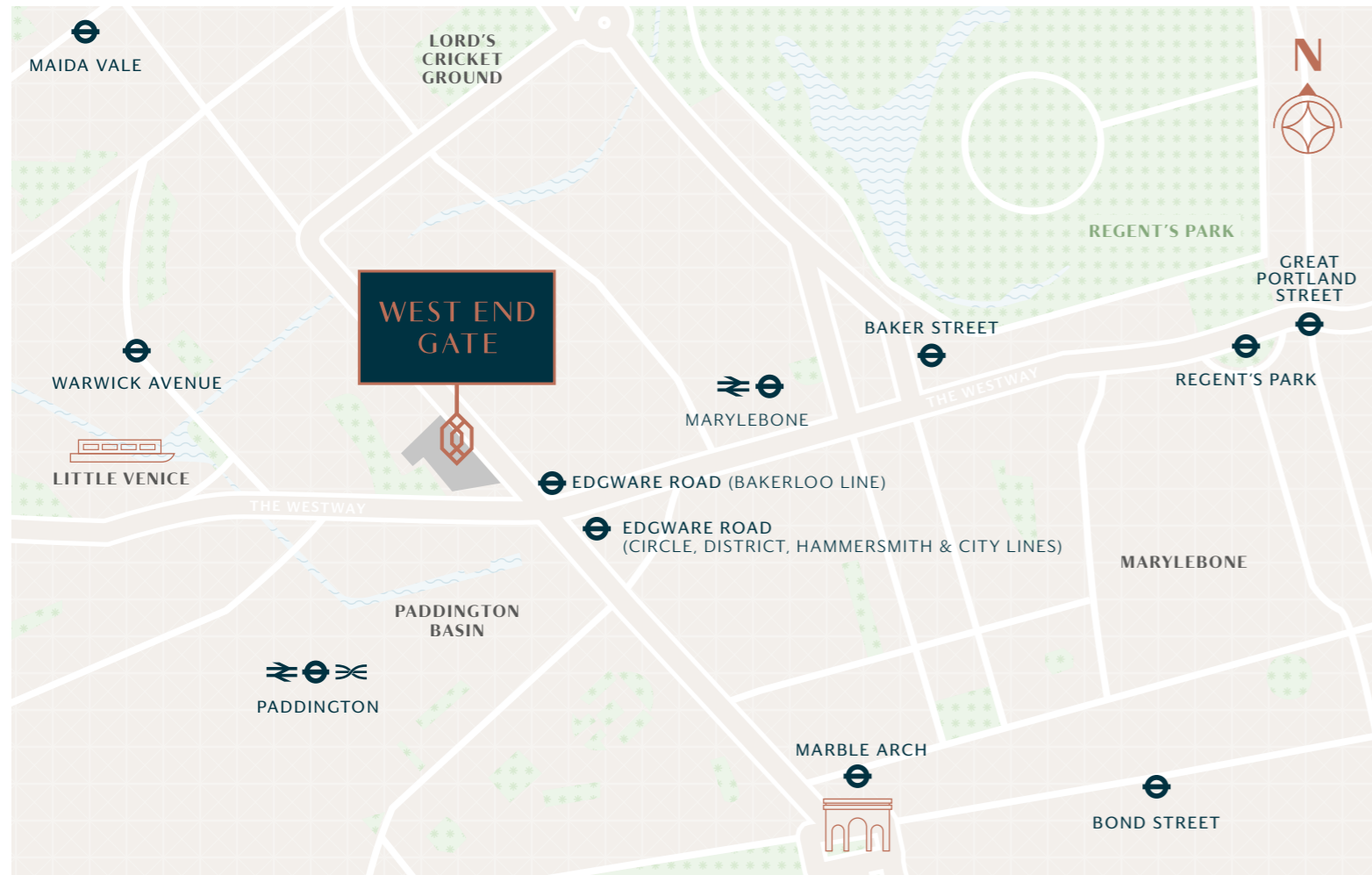
Plot Locator

Plot Locator



- 1 Bed Apartment
- 2 Bed Apartment
- 3 Bed Apartment





Map is not to scale and shows approximate locations only.

<https://qinvestments.london/>