



Q Investments
International



2 Bedroom Apartment / Flat
Marylebone, WC1H 9RA

£6,935

<https://qinvestments.london>



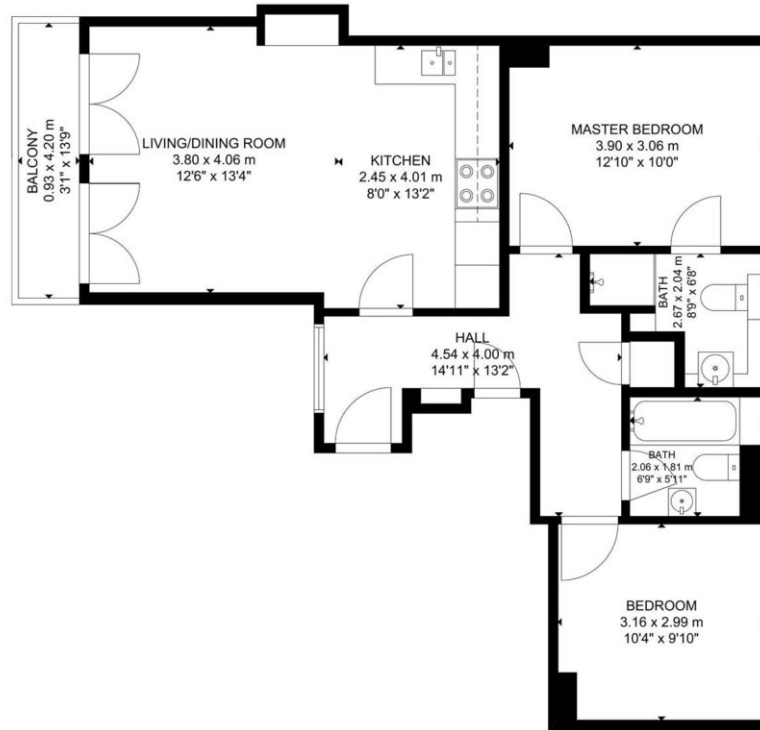
London, Marylebone, WC1H 9RA

Luxury Serviced 2 Bedroom Apartment to Rent in Bloomsbury in London. Virtual Walk-Through available. Virtual Walk-Through available.

Available now, covering 729 sq. ft. in living space, and situated on the 6th floor, this modern property is currently furnished and comes with big windows, high ceilings, and ample storage. The property also benefits from spacious rooms, wooden floors, plenty of natural light throughout, and a balcony. Further features and amenities include:

- Short lets available (3-months and over)
- Air conditioning - a rare feature in London
- Open plan kitchen with dishwasher
- Weekly house cleaning and change of linen and towels
- Washer/Dryer

It is well furnished with all the home comforts and feature high quality interiors, beautiful wooden floorings, high-spec kitchens, modern tiled bathrooms, relaxing bedrooms and everything else you could need. Apartment features a fully equipped kitchen with an oven, hob, microwave, coffee machine, dishwasher and



SIXTH FLOOR

GROSS INTERNAL AREA
 TOTAL: 68 m²/729 sq ft
 SIXTH FLOOR: 68 m²/729 sq ft
 EXCLUDED AREA: BALCONY: 4 m²/42 sq ft
 SIZE AND DIMENSIONS ARE APPROXIMATE, ACTUAL MAY VARY.

