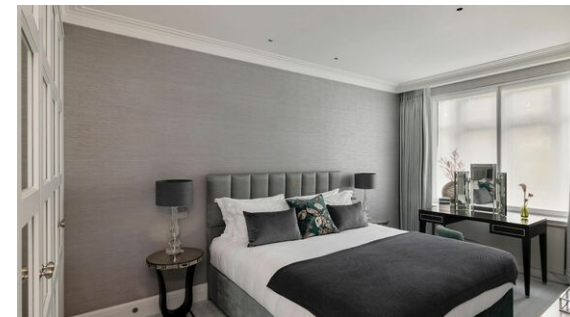
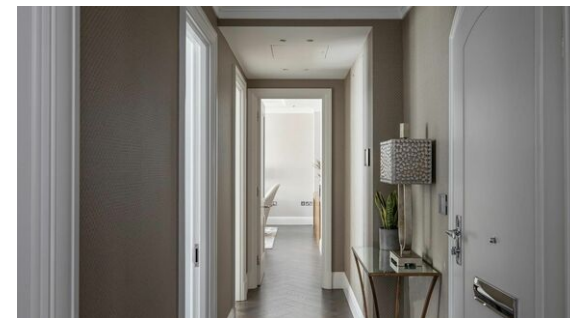




Q Investments  
International

2 Bedroom Apartment / Flat  
Mayfair

£15,137 per month  
<https://qinvestments.london>



## London, Mayfair

**FLEXIBLE 3-12 MONTH STAYS.** A newly refurbished **FULLY SERVICED** two bedroom apartment in a portered building located on Park Lane in London, opposite Hyde Park.

Every room of this bright two bedroom apartment features uninterrupted views over Park Lane and Hyde Park, bringing light and nature into your London home. The master bedroom with its ensuite marble bathroom has an ethereal glow from its soft aqua and pearl décor with cut glass accents. The second bedroom is generously sized in relaxing tones of pale sage and stone, perfect for children or adults. The additional wash and shower room is great for those busy mornings or when you invite guests round to dine. Contrasting with the sleek lines of the kitchen, in the living room the furnishings are accented with jewelled tones of rich greens and sumptuous purples, ready for you to sink into and relax.

This London's most desirable area bridges the old and the new through its historic buildings, renowned restaurants, elegant bars, luxury boutiques, art galleries, museums and auction houses. From Mount Street and Shepherd Market to Piccadilly and Bond Street, Mayfair village offers everything for an elevated everyday experience.

Bordered by three royal parks, at the Park Lane home you are never far away from a quiet place to relax and





AREA 79 SqM 850 SqFt

