



## Crowshott Avenue

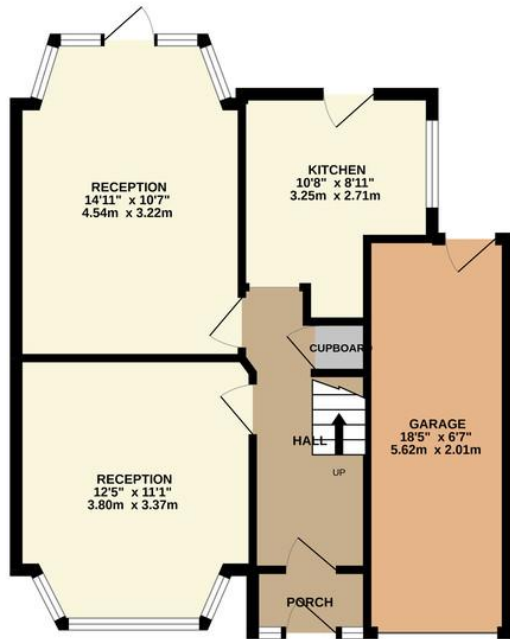
Stanmore, HA7 1HU

£799,950

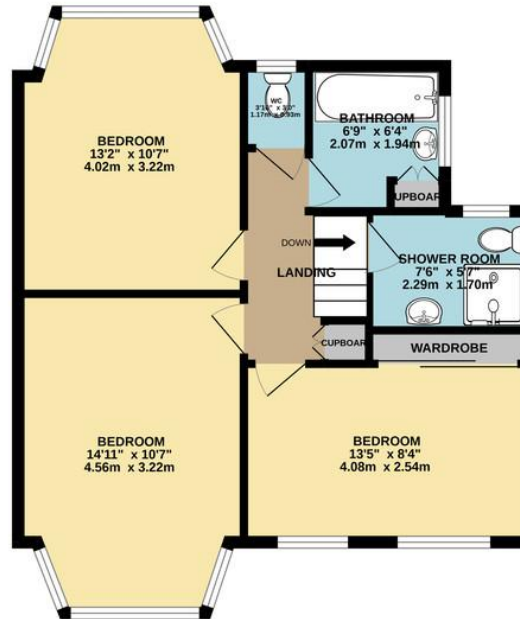
A detached three double bedroom, two bathroom, freehold house that requires modernisation and decoration. This CHAIN FREE property is located close to Park High, Whitchurch, Avanti and Stanburn schools. It overlooks Centenary Park and is within close walking distance to Canons Park Station. EPC Rating: Awaiting.



GROUND FLOOR  
563 sq.ft. (52.3 sq.m.) approx.



1ST FLOOR  
552 sq.ft. (51.3 sq.m.) approx.



TOTAL FLOOR AREA : 1115 sq.ft. (103.6 sq.m.) approx.

Whilst every attempt has been made to ensure the accuracy of the floorplan contained here, measurements of doors, windows, rooms and any other items are approximate and no responsibility is taken for any error, omission or mis-statement. This plan is for illustrative purposes only and should be used as such by any prospective purchaser. The services, systems and appliances shown have not been tested and no guarantee as to their operability or efficiency can be given.  
Made with Metropix ©2022.



EPC Rating: Awaited.

Belmont Circle Office  
506 Kenton Lane  
Harrow  
Middlesex  
HA3 8RD

[www.blacklersestateagents.co.uk](http://www.blacklersestateagents.co.uk)  
0208 907 7701  
[sales@blacklersstates.co.uk](mailto:sales@blacklersstates.co.uk)

Agents Note: Whilst every care has been taken to prepare these particulars, they are for guidance purposes only. All measurements are approximate and for general guidance purposes only and whilst every care has been taken to ensure their accuracy, they should not be relied upon and potential buyers/tenants are advised to recheck the measurements