



Merrick Close

Stevenage | SG1 6GH

Agent Hybrid

Merrick Close

Stevenage | SG1 6GH

Guide Price 400,000 - £425,000

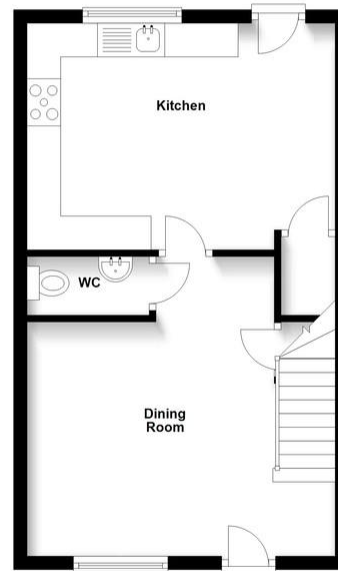


Agent Hybrid welcomes to the market, a very well presented Three Bedroom Town House, located in the heart of Great Ashby and within the catchment of the highly regarded, Round Diamond Junior School. Set over three levels, a accommodation briefly comprises of; A spacious and open plan Entrance, come Dining Room, with doors leading to the Downstairs WC and Kitchen/Diner. The kitchen comes complete with integral appliances to include a Range Cooker, tall fridge freezer, dishwasher and washer dryer. Stairs rise to the first-floor landing where you will find a good-sized Lounge and Bedroom Three (double) with fitted wardrobes. Further stairs rise to the second-floor landing, where you will find the Family Bathroom, Bedroom Two (double) with fitted wardrobes and Bedroom One, complete with En-Suite and a separate room to create a walk-in wardrobe. Externally, the property benefits from a Landscaped Rear Garden, comprising of a full width slate patio, lawn, new concrete panel fencing and raised sleeper beds. Furthermore, a Garage is located to the right of the property with front and rear access and Parking Space in front.

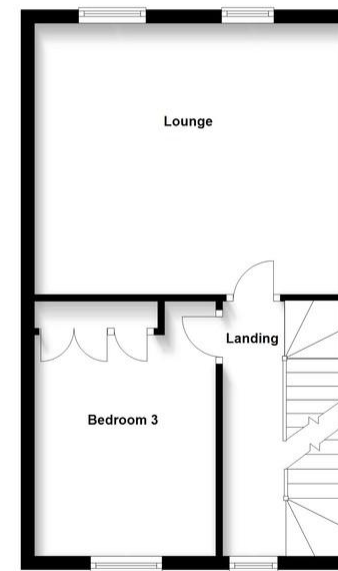
Entrance/Dining Room 14'11 x 14'7
Downstairs WC
Kitchen/Diner 14'11 x 11'1
Lounge 14'11 x 13'2
Bedroom 3: 12'6 x 8'10

Bedroom 1: 10'10 x 9'0
En-Suite
Walk in wardrobe 5'11 x 5'7
Bedroom 2: 11'8 x 9'1
Family Bathroom

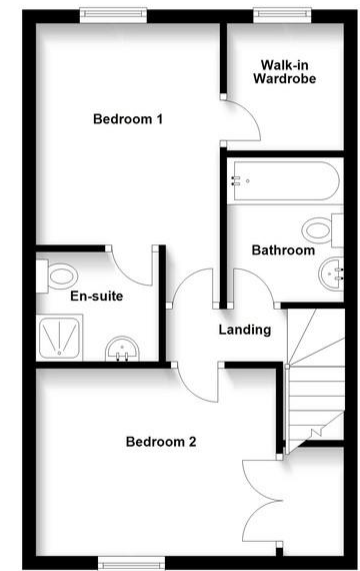
Ground Floor
Approx. 36.2 sq. metres (390.0 sq. feet)



First Floor
Approx. 36.2 sq. metres (390.0 sq. feet)



Second Floor
Approx. 36.2 sq. metres (390.0 sq. feet)



EPC TO FOLLOW

Total area: approx. 108.7 sq. metres (1170.0 sq. feet)

IMPORTANT: we would like to inform prospective purchasers that these sales particulars have been prepared as a general guide only. A detailed survey has not been carried out, nor the services, appliances and fittings tested. Room sizes should not be relied upon for furnishing purposes and are approximate. If floor plans are included, they are for guidance only and illustration purposes only and may not be to scale. If there are any important matters likely to affect your decision to buy, please contact us before viewing the property.

Agent Hybrid

57 High Street, Stevenage, Hertfordshire, SG1 3AQ
Tel: 01438 870673 | enquiries@agenthybrid.co.uk
www.agenthybrid.co.uk

Agent Hybrid