



Flat 1

Caithness Road, Tooting Borders, CR4

£545,000

Property Features

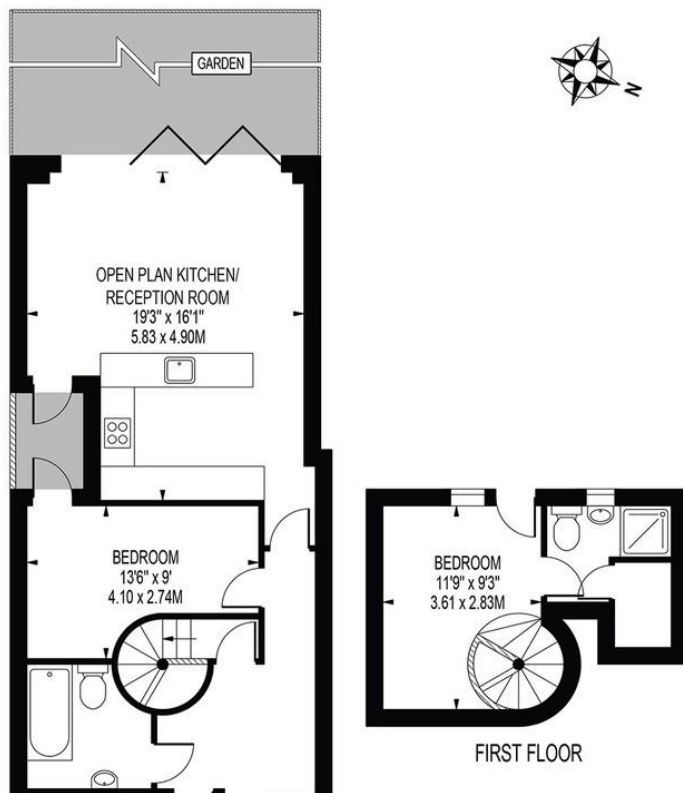
Time2Move of Tooting are pleased to present an impeccable split level converted flat on the tree lined Caithness Road CR4. Ideally placed for ease of access to reliable transport via rail or tube, the property is also close to major supermarkets a wide choice of shops restaurants Tooting Broadway and of course St Georges Hospital



%epcGraph_c_1_224%

CAITHNESS ROAD

APPROXIMATE GROSS INTERNAL FLOOR AREA: 885 SQ FT - 82.25 SQ M



Agents Note: Whilst every care has been taken to prepare these sales particulars, they are for guidance purposes only. All measurements are approximate and for general guidance purposes only and whilst every care has been taken to ensure their accuracy, they should not be relied upon and potential buyers are advised to recheck the measurements

- Sought After Location
- Chain Free
- Share of Freehold
- Three Bedroom
- Luxurious Bathroom Suite
- En-suite shower room
- Private garden

Tooting Office
Tooting
London

Mon-Fri: 8:30am - 7pm
Sat: 9am - 5pm

www.time2move.com
admin@time2move.com
0208 640 0146

