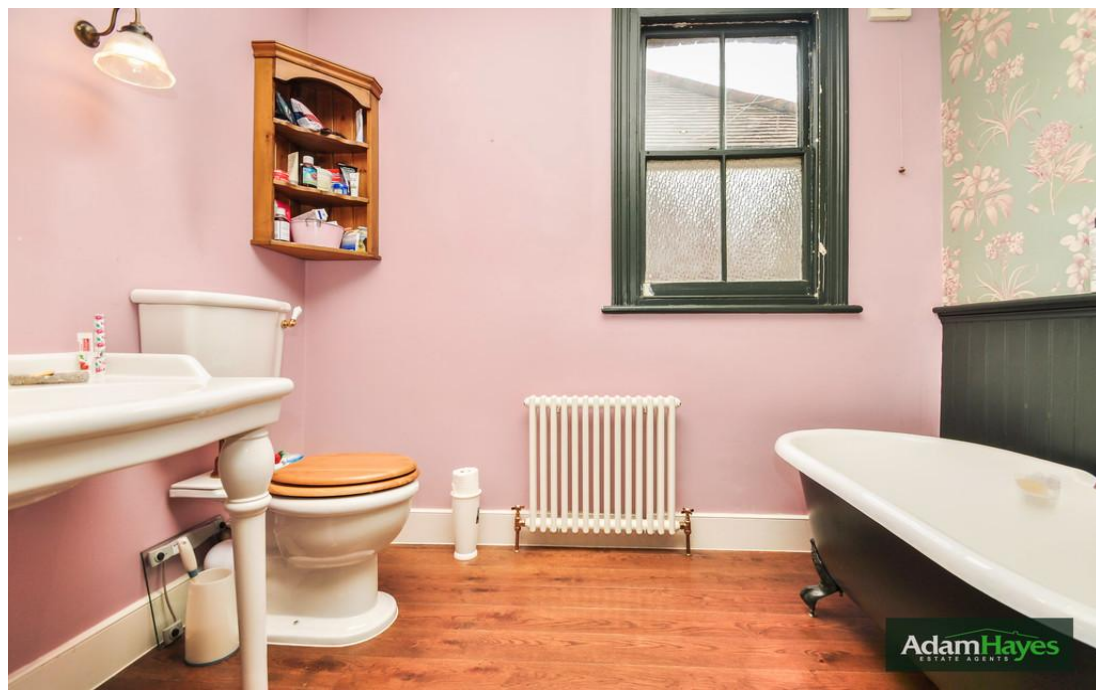
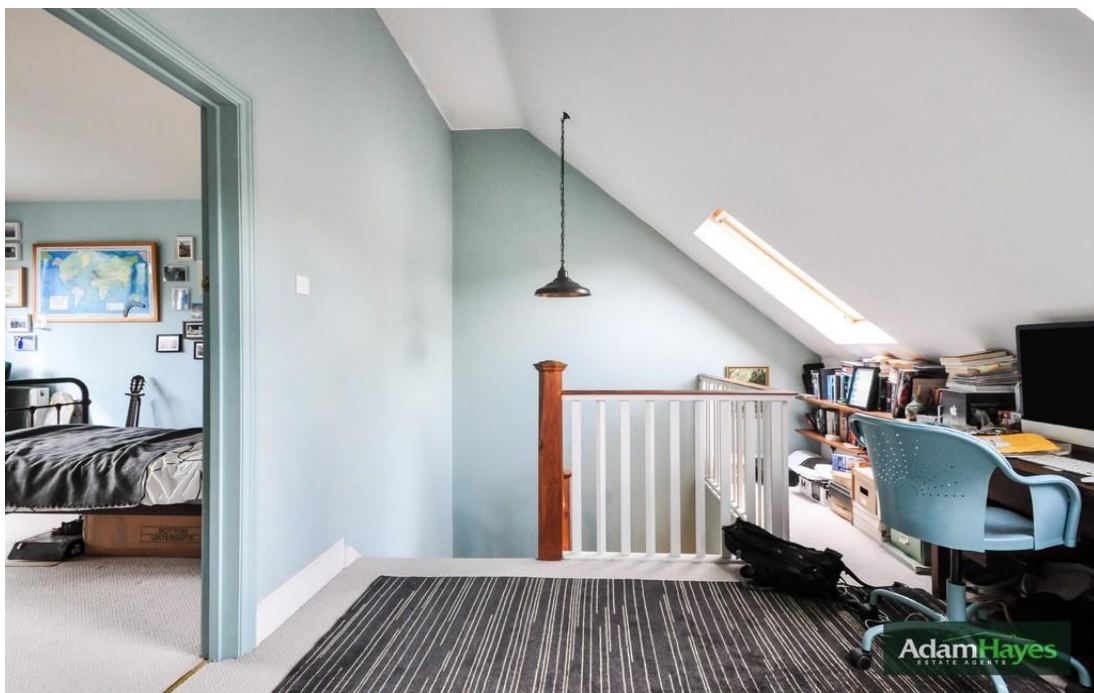




Avondale Avenue, North Finchley, N12

£1,200,000

 6 Bedrooms  2 Bathrooms  2 Receptions



North Finchley Office

365 Ballards Lane, North Finchley, London, N12 8LL

Tel: 020 8445 4008 Email: info@adam-hayes.co.uk Web: www.adam-hayes.co.uk

Avondale Avenue, North Finchley, N12

£1,200,000

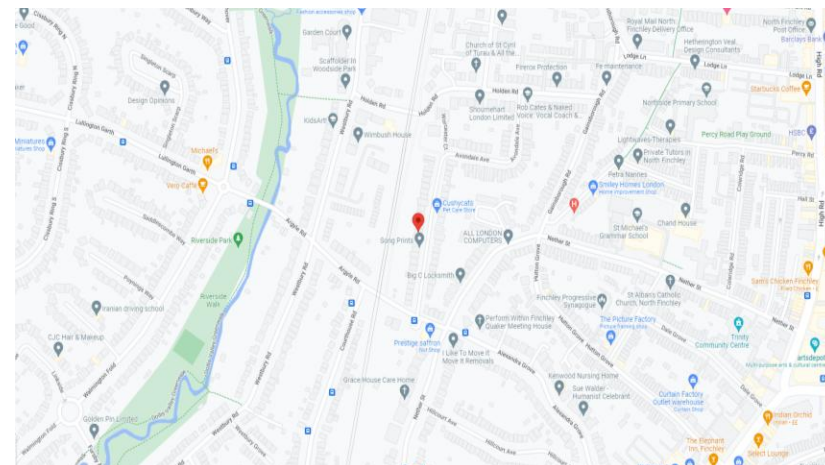
 6 Bedrooms  2 Bathrooms  2 Receptions

Key Features

- Six Bedrooms
- Two Bathrooms
- Character Features
- Semi-Detached
- Mature Garden
- Utility Room

Other Information

- Tenure: Freehold
- Council Tax Band: F

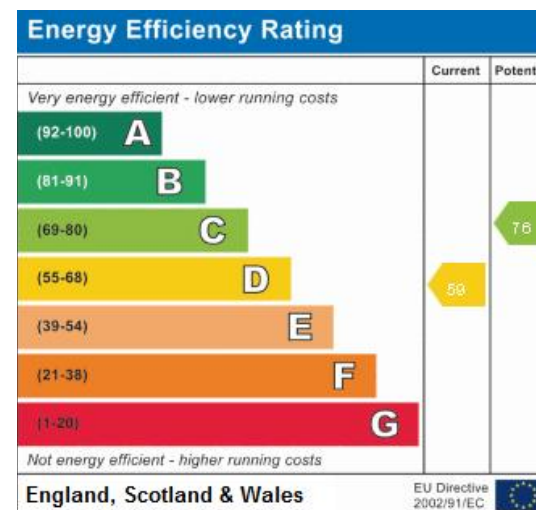


Nearest Stations

Woodside Park Station	0.3 miles
West Finchley Station	0.3 miles
Finchley Central Station	1.6 miles

Property Description

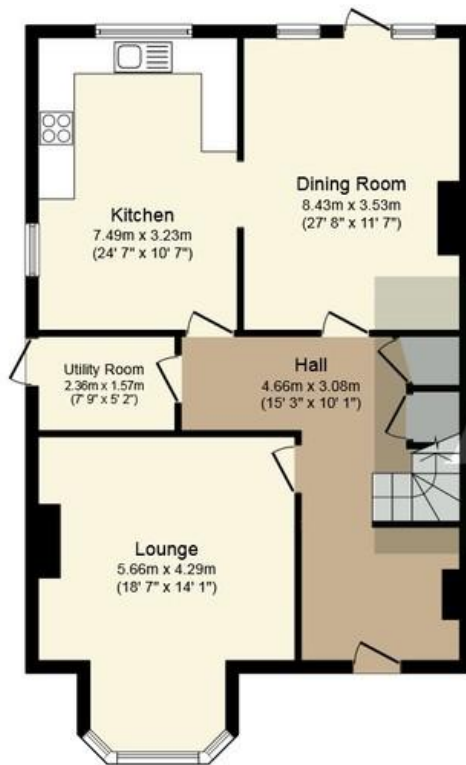
Situated in this popular tree lined road off Argyle Road and within 0.3 miles away from Woodside Park Tube Station is this well presented and extended six bedroom, two bathroom semi-detached character house. The property benefits from a mature rear garden, two separate reception rooms, an additional utility room, character features including a number of fireplaces and ceiling mouldings and Juliet balconies. However to really appreciate the size, location and character an internal viewing is highly recommended via vendors sole agents Adam Hayes Estate Agents



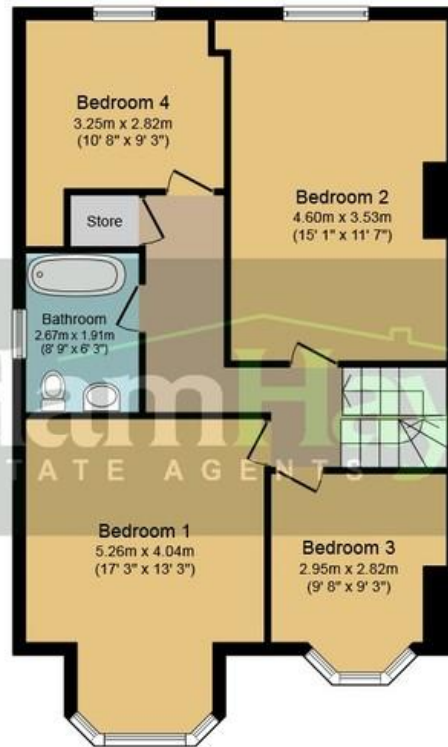
North Finchley Office

365 Ballards Lane, North Finchley, London, N12 8LL

Tel: 020 8445 4008 Email: info@adam-hayes.co.uk Web: www.adam-hayes.co.uk



Ground Floor



First Floor



Second Floor

Total floor area 198.0 sq. m. (2,131 sq. ft.) approx

This plan is for illustration purposes only and may not be representative of the property. Plan not to scale.

These particulars, whilst believed to be accurate, are set out as a general outline only for guidance and do not constitute any part of an offer or contract. Intending purchasers or prospective tenants should not rely on them as statements or representation of fact, but must satisfy themselves by inspection or otherwise as to their accuracy. We have not carried out a detailed survey, not tested the services, appliances and specific fittings. Room sizes should not be relied upon for carpets and furnishings. The measurements given are approximate. No person in this firm's employment has the authority to make or give any representation or warranty in respect of the property.