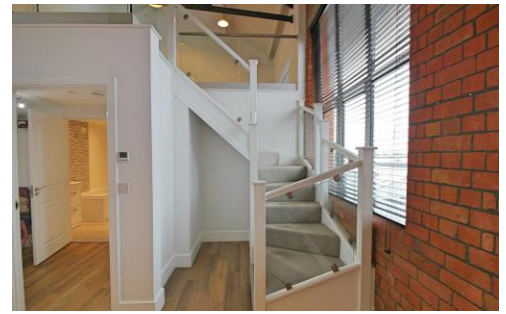


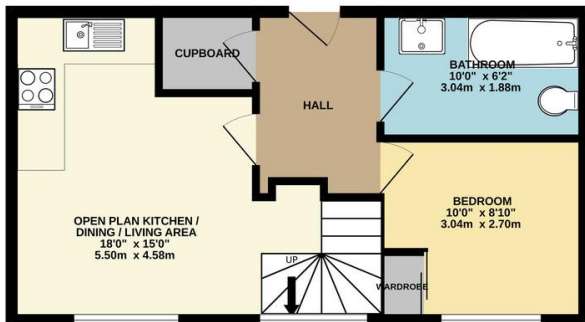


# Property Summary

\*\*\* No Chain \*\*\* Flexible Living Space \*\*\* Larger Than The Average One Bedroom Apartment \*\*\* This one bedroom apartment stands quite alone in comparison to other one bedroom apartments. The property has flexible living space with an open living kitchen to the ground floor and further living space or potential home working space to the first floor. The apartment is stylish and is located in one of the most sought after buildings in Leicester. Stylish city living for the young working professional doesn't come better than this.



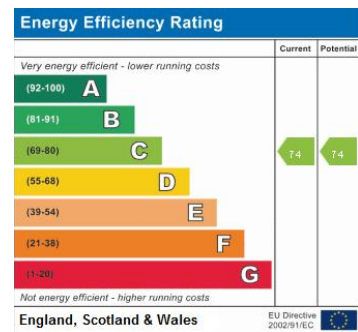
GROUND FLOOR  
421 sq.ft. (39.1 sq.m.) approx.



1ST FLOOR  
218 sq.ft. (20.2 sq.m.) approx.

TOTAL FLOOR AREA : 639 sq.ft. (59.4 sq.m.) approx.

Whilst every attempt has been made to ensure the accuracy of the floorplan contained here, measurements of doors, windows, rooms and any other items are approximate and no responsibility is taken for any error, omission or mis-statement. This plan is for illustrative purposes only and should be used as such by any prospective purchaser. The services, systems and appliances shown have not been tested and no guarantee as to their operability or efficiency can be given.  
Made with Metropix ©2023



- Flexible Living Space
- One Bedroom
- Second Floor Apartment
- Highly Sought After Location
- No Upward Chain
- Parking
- Immaculate Throughout
- Potential For Home Working Space

phillips george | sales & lettings

Agents Note: Whilst every care has been taken to prepare these sales particulars, they are for guidance purposes only. All measurements are approximate and for general guidance purposes only and whilst every care has been taken to ensure their accuracy, they should not be relied upon and potential buyers are advised to recheck the measurements

🏠 46 Long Street, Wigston, Leicestershire, LE18 2AH

✉ info@phillipsgeorge.co.uk  
☎ 0116 216 8178

