



Farlington Court

guide price £120,000

- Chain free
- Modern Decor
- Two Double Bedrooms
- Large Lounge
- Fitted Kitchen
- Perfect First Time Buy
- Highly Recommended
- Great Location
- EPC Rating: D



 2
  1
  1



About the property

****GUIDE PRICE £120,000 - £125,000 ****In excellent order throughout this two double bedroom flat in Cranleigh Rise would make a perfect first time buy. Located within easy reach of shops, bus stops and local amenities. Call for all the details.

Accommodation

Entrance

Enter via the secure communal door to front into the hallway with stairs to all floors.

Hallway

Enter via the front door into the hallway with access to all rooms.

Lounge

14' 6" x 11' 8" (4.42m x 3.56m)

Upvc double glazed window. Laminate floor. Radiator. Door to kitchen.

Kitchen

9' x 7' 1" (2.74m x 2.16m)

Upvc double glazed window. a range of matching wall and base units incorporating heat resistant work surfaces. Built in oven and gas hob with extractor fan over. Plumbed for a washing machine and space for a fridge freezer. Tiled splashbacks.



Bedroom One

12' x 9' 9" (3.66m x 2.97m)

Upvc double glazed window. Fitted carpets. Radiator.

Bedroom Two

12' x 8' 4" (3.66m x 2.54m)

Upvc double glazed window. Fitted carpets. Radiator.

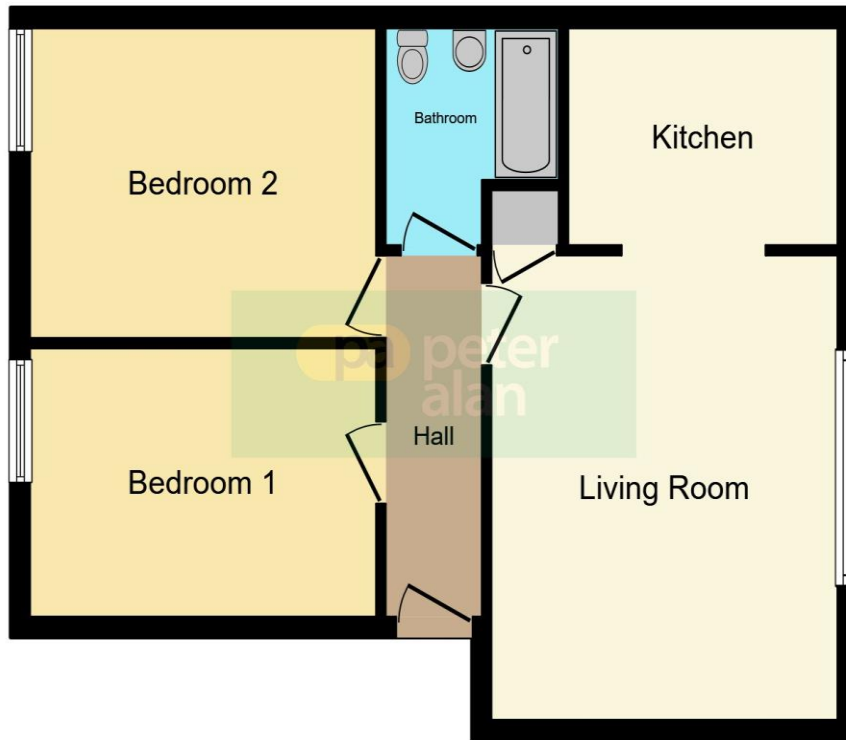
Bathroom

Upvc double glazed frosted window. Panelled bath with mixer taps over. Low level WC. Wash hand basin. Tiled splashbacks and tiled floor.

02920 792888

rumney@peteralan.co.uk

Floorplan



This floorplan is for illustrative purposes only and is not drawn to scale. Measurements, floor-areas, openings and orientations are approximate. They should not be relied upon for any purpose and do not form any part of an agreement. No liability is taken for any error or mis-statement. All parties must rely on their own inspections.

Important Information

Note while we endeavour to make our sales details accurate and reliable, if there is any point which is of particular interest to you, please contact the office and we will be pleased to confirm the position for you. We have not personally tested any apparatus, equipment, fixtures, fittings or services and cannot verify they are in working order or fit for their purposes. Nothing in these particulars is intended to indicate that carpets or curtains, furnishings or fittings, electrical goods (whether wired or not). Gas fires or light fittings or any other fixtures not expressly included form part of the property offered for sale. This computer generated Floorplan, if applicable, is intended as a general guide to the layout and design of the property. It is not to scale and should not be relied upon for dimensions. Tenure: We cannot confirm the tenure of the property as we have not had access to the legal documents. The buyer is advised to obtain verification from their solicitor or surveyor.

Peter Alan Limited is registered in England and Wales under company number 2073153, Registered Office is Cumbria House, 16-20 Hockliffe Street, Leighton Buzzard, Bedfordshire, LU7 1GN. VAT Registration Number is 500 2481 05. For activities relating to regulated mortgages and non-investment insurance contracts, Peter Alan Limited is an appointed representative of Connells Limited which is authorised and regulated by the Financial Conduct Authority. Connells Limited's Financial Services Register number is 302221. Most buy-to-let