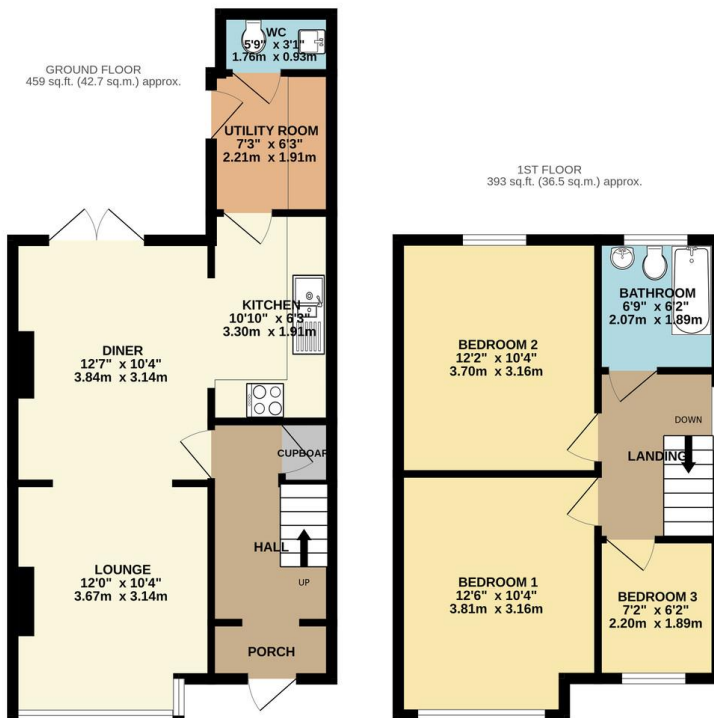
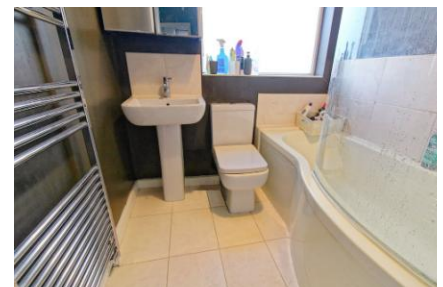


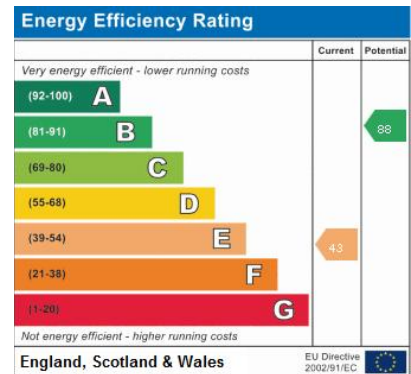
FOR SALE

3 Bed Semi-Detached House in Shropshire Road, Aylestone LE2 8HW
£240,000

Located in Aylestone this well appointed three bedroom end town house is presented to a tidy standard throughout. The accommodation comprises main entrance hall, open plan living room and diner, refitted kitchen, ground floor W.C, landing to three bedrooms and bathroom, front and rear mature gardens and driveway. Call Phillips George to view.



TOTAL FLOOR AREA: 852 sq.ft. (79.2 sq.m.) approx.
 Whilst every attempt has been made to ensure the accuracy of the floorplan contained herein, measurements of doors, windows, rooms and any other items are approximate and no responsibility is taken for any error, omission or mis-statement. This plan is for illustrative purposes only and should be used as such by any prospective purchaser. The services, systems and appliances shown have not been tested and no guarantee as to their operability or efficiency can be given.
 Made with Metrepro ©2023



- End Of Town House
- Three Bedrooms
- Highly Popular Location
- Large Rear Garden
- Neatly Presented
- Open Plan Living
- Utility Room
- Ground Floor W.C

Agents Note: Whilst every care has been taken to prepare these sales particulars, they are for guidance purposes only. All measurements are approximate are for general guidance purposes only and whilst every care has been taken to ensure their accuracy, they should not be relied upon and potential buyers are advised to recheck the measurements.

