



Wallington Court, N4 2BN

£550,000
Leasehold



Wallington Court

£550,000

Leasehold

This larger than average one double bedroom apartment is set across the top floor of Wallington Court within this popular development, enjoying stunning views overlooking Clissold Park and the City. The bright and spacious accommodation has 619sqft/57.5sqm of living space and is very well presented throughout. It benefits from a modern fully fitted kitchen with a bright open plan reception room leading to a private balcony extending the length of the room. This SE/SW dual aspect space includes extensive glazing, with a Juliette balcony to the lounge area. The flooring has been upgraded throughout with engineered oak. The bedroom features full height window doors with access to a second Juliette balcony and bespoke fitted wardrobes. Wallington Court, is situated moments away from Clissold Park and Stoke Newington High Street, with its independent boutique stores and restaurants, just a short walk away, across the park.

- Top Floor One Bedroom
- Very Well Presented
- Private Balcony
- 619sqft/57.5sqm
- Epc Rating B
- Close to Woodberry Wetlands & Nature Reserve
- Great Transport Links
- Dual Aspect





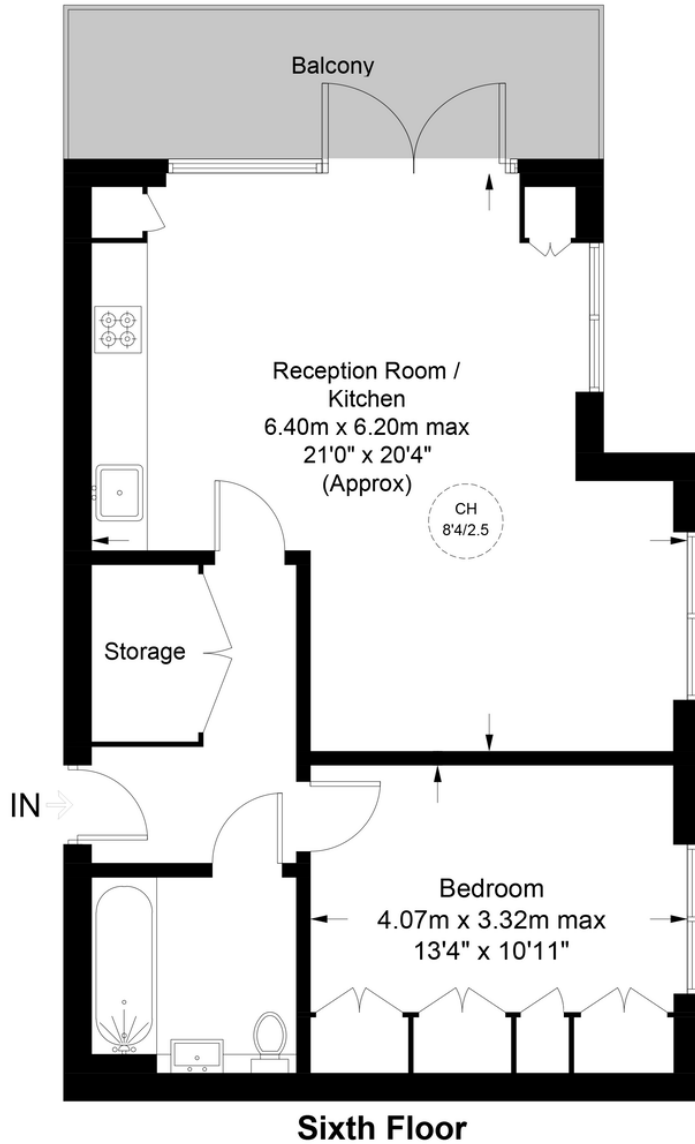


Wallington Court, N4

Approximate Gross Internal Area = 619 sq ft / 57.5 sq m

DAVID ANDREW

your most valuable asset



Score	Energy rating	Current	Potential
92+	A		
81-91	B	82 B	82 B
69-80	C		
55-68	D		
39-54	E		
21-38	F		
1-20	G		

Archway Office

671 Holloway Road
London, N19 5SE

T (0)20 7619 3750

Highbury Office

90 Highbury Park
London N5 2XE

T (0)20 7354 9111

Stroud Green Office

167 Stroud Green Road
London N4 3PZ

T (0)20 7281 2000

General Contact



Certified Property Measurer

This plan is for layout guidance only. Not drawn to scale unless stated. Windows and door openings are approximate. Whilst every care is taken in the preparation of this plan, please check all dimensions, shapes and compass bearings before making any decisions reliant upon them. (ID1022890)

DAVID ANDREW | your most valuable asset

Agent's Note:

Whilst Care has been exercised in the preparation of these sales particulars, statements about the property must not be relied upon as representations of statements or fact. Prospective purchasers must make and rely upon their own enquiries and those of professional representatives. The company accept not liability for any error contained in these particulars.