



Rupert Gardens | London | SW9 7TJ

Long Leasehold

£350,000

- Low rise ex council block
- Three bedrooms
- Over the top two floors
- Balcony
- Split level
- Double glazing
- Gas central heating
- Loughborough Junction
- Brixton tube
- Chain free

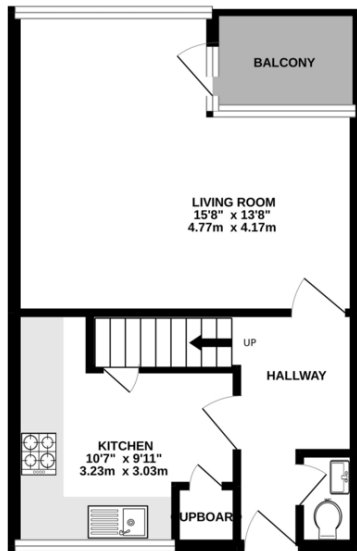


Low rise ex council flat. Three bedrooms, Split level, top floor apartment, with a balcony. Located within walking distance of Brixton tube, Loughborough Junction rail into Blackfriars & St Pancras. Ruskin Park is within walking distance along with Kings College Hospital. Offered chain free. Service charge £1550 PA

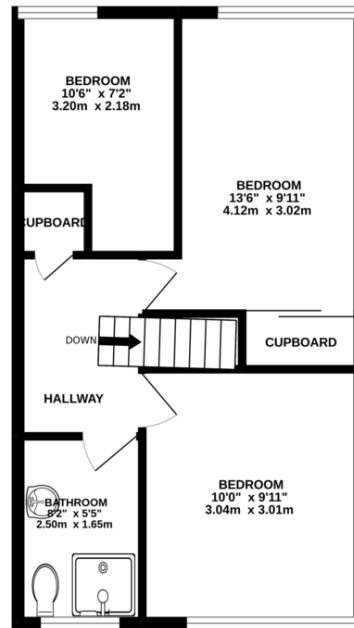


%epcGraph_c_1_300%

1ST FLOOR
356 sq.ft. (33.1 sq.m.) approx.



3RD FLOOR
441 sq.ft. (41.0 sq.m.) approx.



TOTAL FLOOR AREA : 797 sq.ft. (74.1 sq.m.) approx.

Whilst every attempt has been made to ensure the accuracy of the floorplan contained here, measurements of doors, windows, rooms and any other items are approximate and no responsibility is taken for any error, omission or mis-statement. This plan is for illustrative purposes only and should be used as such by any prospective purchaser. The services, systems and appliances shown have not been tested and no guarantee as to their operability or efficiency can be given.
Made with Metropix ©2022

Viewing Arrangements

Strictly by appointment

Contact Details

121 Denmark Hill
London
SE5 8EN

www.urbanvillagehomes.co.uk
sales@urbanvillagehomes.com
020 3519 9121

Agents Note: Whilst every care has been taken to prepare these sales particulars, they are for guidance purposes only. All measurements are approximate and for general guidance purposes only and whilst every care has been taken to ensure their accuracy, they should not be relied upon and potential buyers are advised to recheck the measurements