



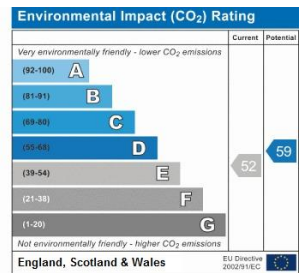
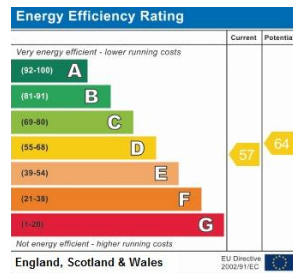
Kenwyn Road | London | SW4 7LH

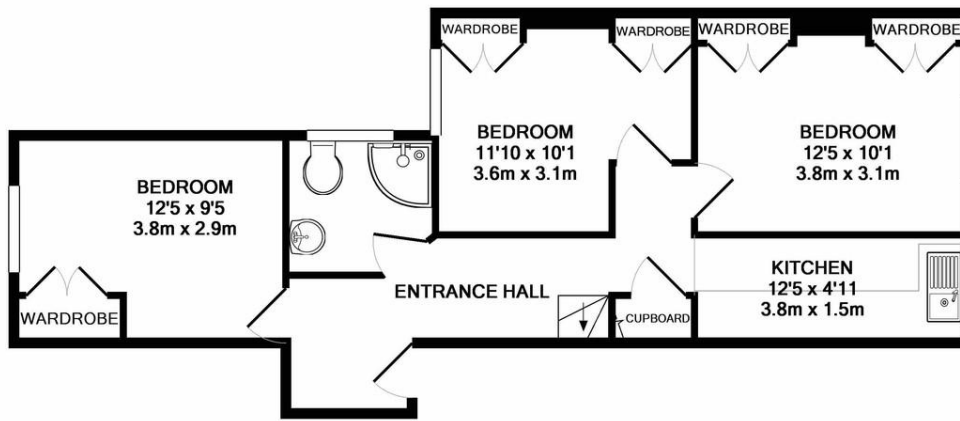
£2,400 pcm

- Split level maisonette
- Three double bedrooms
- New kitchen
- Well presented
- Period features
- Clapham Tube
- Clapham Common
- Available now
- Furnished
- Managed



A beautifully presented, light and spacious three double bedroom apartment. New kitchen and high specification throughout. Arranged over the top two floors of this Victorian property, the three double bedrooms are on one level and the lounge is up in the loft conversion, with a pretty fireplace and skyline views. Excellent location for Clapham tube, restaurants and shops. Ideal for professional sharers. Available now, furnished.

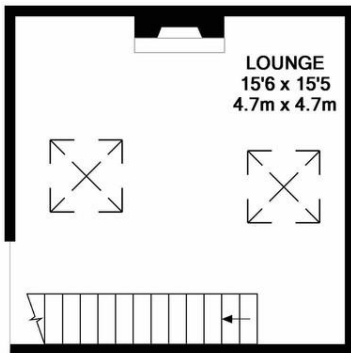




GROUND FLOOR
APPROX. FLOOR
AREA 558 SQ.FT.
(51.8 SQ.M.)

TOTAL APPROX. FLOOR AREA 797 SQ.FT. (74.1 SQ.M.)

Whilst every attempt has been made to ensure the accuracy of the floor plan contained here, measurements of doors, windows, rooms and any other items are approximate and no responsibility is taken for any error, omission, or mis-statement. This plan is for illustrative purposes only and should be used as such by any prospective purchaser. The services, systems and appliances shown have not been tested and no guarantee as to their operability or efficiency can be given
Made with Metropix ©2018



LOFT LOUNGE
APPROX. FLOOR
AREA 239 SQ.FT.
(22.2 SQ.M.)

Viewing Arrangements

Strictly by appointment

Contact Details

121 Denmark Hill

London

SE5 8EN

www.urbanvillagehomes.co.uk

lettings@urbanvillagehomes.com

020 3519 9121

Agents Note: Whilst every care has been taken to prepare these sales particulars, they are for guidance purposes only. All measurements are approximate are for general guidance purposes only and whilst every care has been taken to ensure their accuracy, they should not be relied upon and potential buyers are advised to recheck the measurements