



MILE



Springwell Avenue, London £325,000 Leasehold

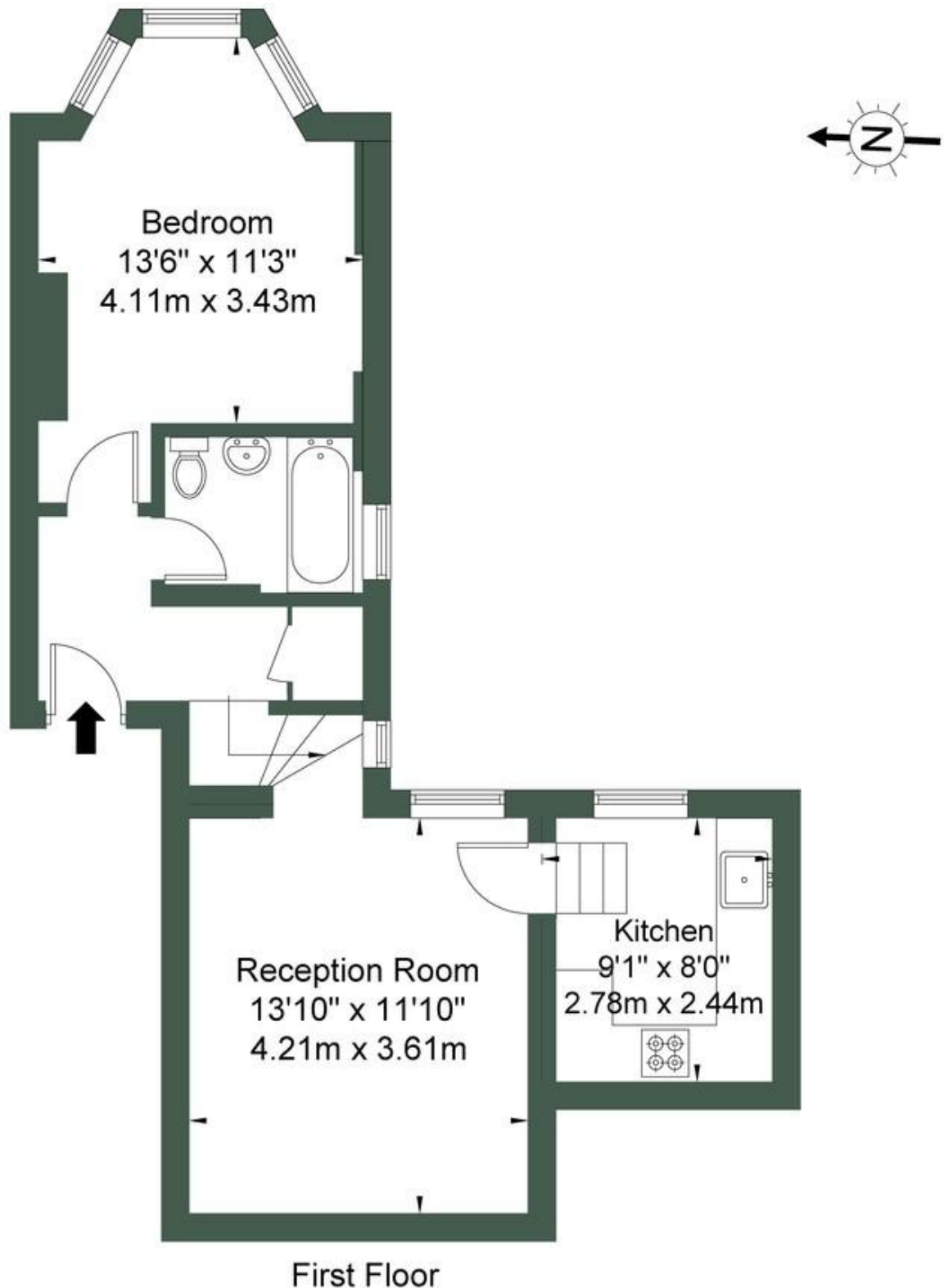
Mile are delighted to present this spacious one bedroom flat on a residential road in NW10!

Springwell Avenue is a quiet road ideally positioned close to all the local amenities of Harlesden and Willesden Junction and less than 15 minutes' walk from the future Old Oak Common HS2 / Cross rail interchange. Maple Walk and Leopold schools with Roundwood Park and Wormwood Scrubs only a short distance away. The nearest stations are Harlesden and Willesden Junction (Bakerloo line / Overground - zone 2).

- 508 sq ft!
- Bright and airy
- Close to shops and local amenities
- Abundance of natural light
- Chain Free
- Spacious
- Excellent condition
- First floor flat
- Long Lease
- Good transport links

Springwell Avenue NW10 4HN

Approx Gross Internal Area = 47.2 sq m / 508 sq ft



Ref

Copyright



The Floor plan is not to scale and measurements and areas shown are approximate and therefore should be used for illustrative purposes only. The plan has been prepared in accordance with the RICS code of Measuring Practice and whilst we have confidence in the information produced it must not be relied on. If there is any aspect of particular importance, you should

MONEY LAUNDERING REGULATIONS 2003: Intending purchasers will be asked to produce identification documentation at a later stage and we would ask for your co-operation in order that there will be no delay in agreeing the sale.

General: While we endeavour to make our sales particulars fair, accurate and reliable, they are only a general guide to the property and, accordingly, if there is any point which is of particular importance to you, please contact the office and we will be pleased to check the position for you, especially if you are contemplating travelling some distance to view the property.

Measurements: These approximate room sizes are only intended as general guidance. You must verify the dimensions carefully before ordering carpets or any built-in furniture.

Services: Please note we have not tested the services or any of the equipment or appliances in this property, accordingly we strongly advise prospective buyers to commission their own survey or service reports before finalising their offer to purchase.