

**Flat 3, 453 Poole Road, Branksome,  
Poole, BH12 1DH**

**£169,950  
Leasehold**



**\*\* IDEAL FIRST TIME BUY OR BUY TO LET \*\*** A two double bedroom second floor apartment conveniently situated within a few minutes of Branksome mainline railway station, a large retail park, local shops and bus stops serving both Bournemouth and Poole town centres. The apartment is presented for sale in good order throughout and offers deceptively spacious and well laid out accommodation comprising entrance hall, lounge/dining room, kitchen, two double bedrooms and bathroom. Notable features include gas central heating, double glazing, low outgoings, pet friendly, and a small south facing rear balcony. Offered for sale with vacant possession.



**APPROACH** Via a secure communal front door which opens into a generous lobby which leads though to an external metal staircase. Flat 3 is situated on the second floor. A small south facing balcony gives access to a new composite multi point locking front door which opens into:

**ENTRANCE VESTIBULE** UPVC double glazed window, short flight of steps up to:

**HALLWAY** Recessed ceiling spotlights, radiator, part wood panelling to walls.

**LOUNGE** 15' 7" x 13' 7" (4.75m x 4.14m) UPVC double glazed front aspect window, radiator, ornamental fire surround with electric fire, recessed ceiling spotlights.

**BEDROOM 1** 11' 8" x 8' 11" (3.56m x 2.72m) UPVC double glazed rear aspect window, radiator, full height cupboard housing gas fired central heating boiler (two years old), recessed ceiling spotlights.

**KITCHEN** 10' 4" x 5' 11" (3.15m x 1.8m) Fitted with a range of base and wall mounted cupboards and drawers with complementary roll top worksurface areas with ceramic tiled splashbacks, one and a half bowl sink unit with chrome swan neck mixer tap, stainless steel electric oven with ceramic hob and matching extractor hood above, UPVC double glazed rear aspect window, integrated fridge and freezer, integrated washing machine.

**BATHROOM** Fitted with a modern white suite comprising panel enclosed bath with mains shower and shower screen, enclosed cistern WC, built in vanity unit comprising wash hand basin with storage cupboards beneath and useful shelf, loft hatch, recessed ceiling spotlights, extractor fan, chrome ladder style heated towel rail.

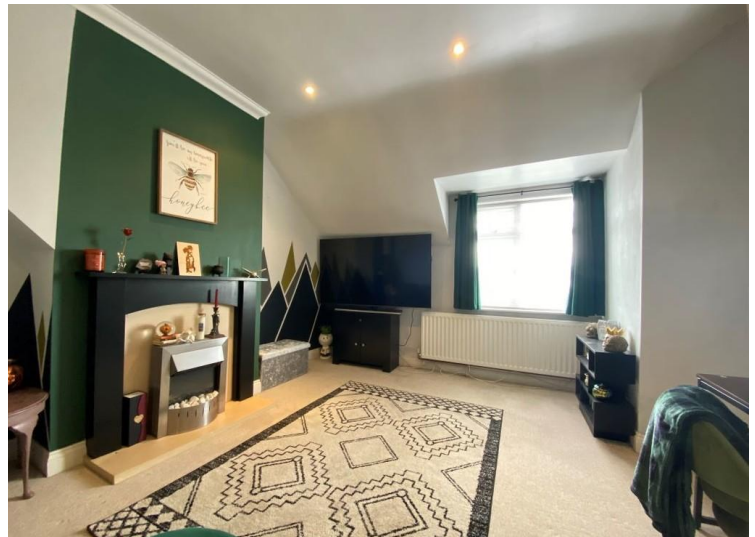
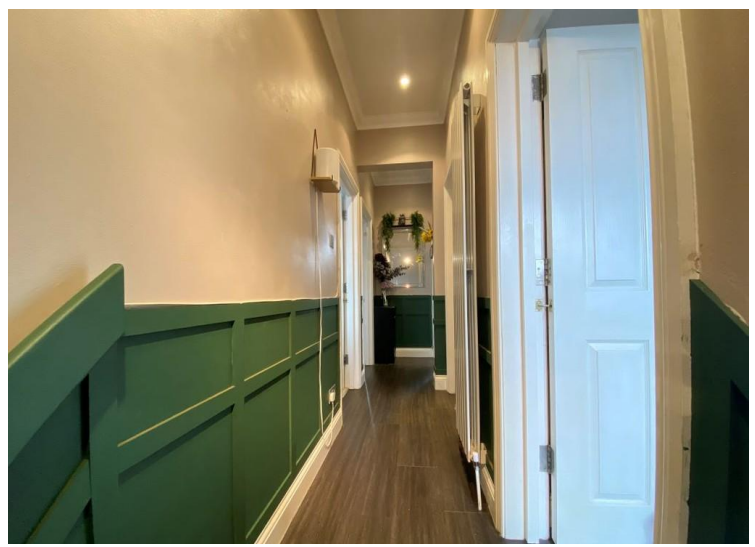
**BEDROOM 2** 13' 11" x 6' 2" extending to 8' 6" (4.24m x 1.88m) Recessed ceiling spotlights, UPVC double glazed front aspect window, Velux window, radiator.

**OUTSIDE** To the rear of the property is a bin storage area and a timber gate gives pedestrian access to Langley Road.

**TENURE** Leasehold. 125 year lease from 2004.

**SERVICE CHARGES** Maintenance is on a as and when basis. Building insurance £150 per annum.

**GROUND RENT** £100 per annum.

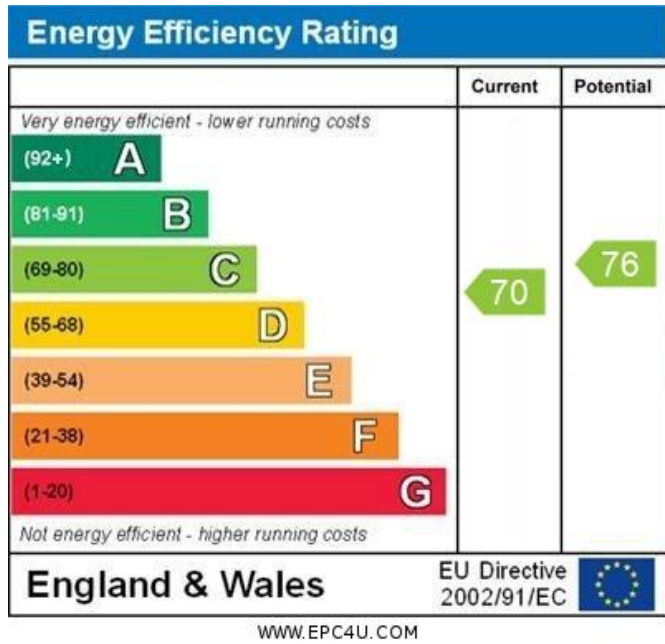


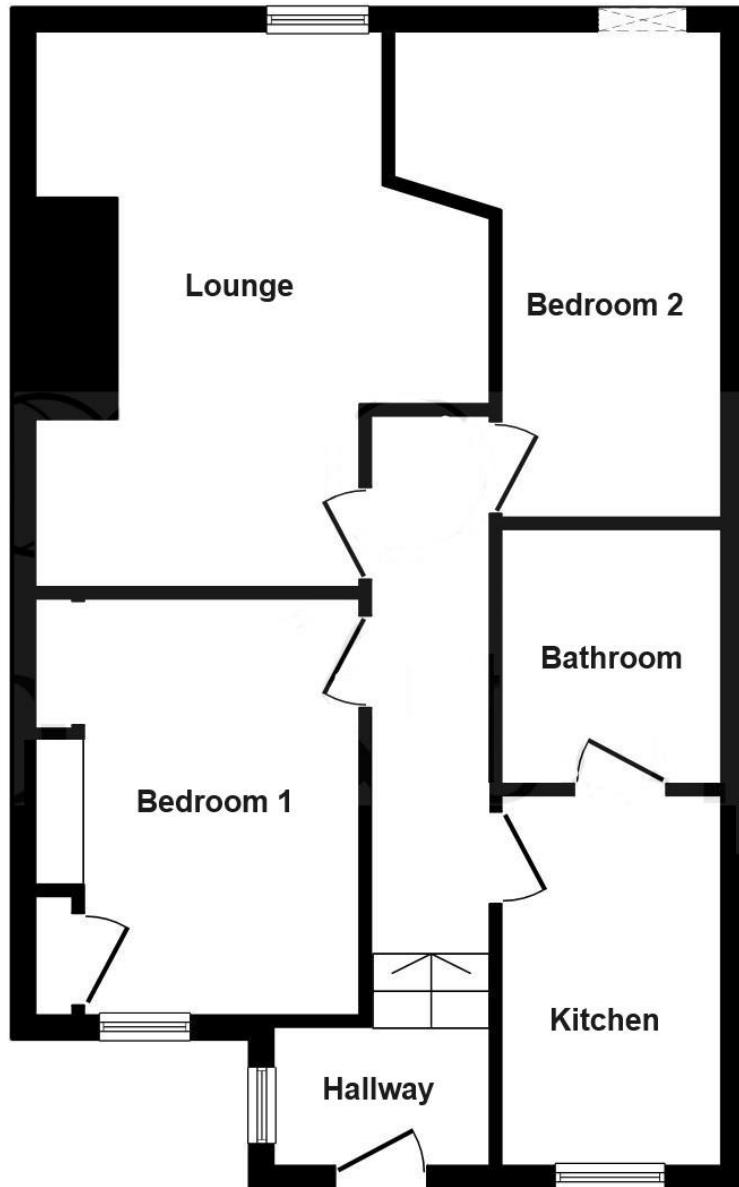


**COUNCIL TAX BAND 'A'** This information has been supplied by Bournemouth, Christchurch and Poole Council, and we would suggest you verify this information prior to purchase.

**Consumer Protection from Unfair Trading Regulations 2008.** The Agent has not tested any apparatus, equipment, fixtures and fittings or services and so cannot verify that they are in working order or fit for the purpose. A Buyer is advised to obtain verification from their Solicitor or Surveyor. References to the Tenure of a Property are based on information supplied by the Seller. The Agent has not had sight of the title documents. A Buyer is advised to obtain verification from their Solicitor. Items shown in photographs are NOT included unless specifically mentioned within the sales particulars. They may however be available by separate negotiation. Buyers must check the availability of any property and make an appointment to view before embarking on any journey to see a property.

**Ref: 15475**





This floor plan is for illustrative purposes only. It is not drawn to scale. Any measurements, floor areas (including any total floor area), openings and orientation are approximate. No details are guaranteed, they cannot be relied upon for any purpose and they do not form part of any agreement. No liability is taken for any error, omission or misstatement. A party must rely upon its own inspection(s). Plan produced for Fox & Sons Powered by [www.focalagent.com](http://www.focalagent.com)

Towngate House, 2-8 Parkstone Road, Poole BH15 2PW | T 01202 660900 | E [poole@wilsonthomas.co.uk](mailto:poole@wilsonthomas.co.uk)  
5 Bournemouth Road, Lower Parkstone, Poole BH14 OEF | T 01202 717771 | E [lowerparkstone@wilsonthomas.co.uk](mailto:lowerparkstone@wilsonthomas.co.uk)  
219 Lower Blandford Road, Broadstone, Poole BH18 8DN | T 01202 691122 | E [broadstone@wilsonthomas.co.uk](mailto:broadstone@wilsonthomas.co.uk)  
[www.wilsonthomas.co.uk](http://www.wilsonthomas.co.uk)