



MILE



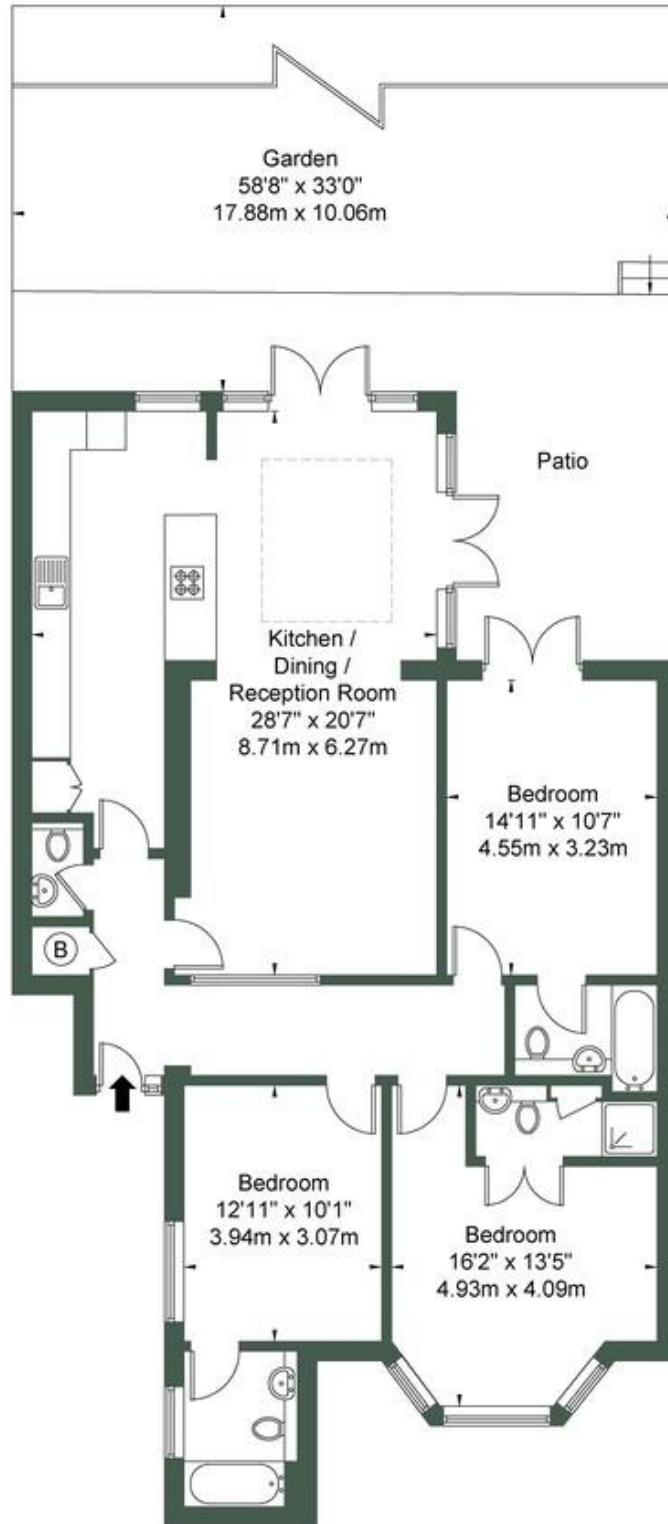
Cavendish Road, London £1,050,000 Freehold

Beautiful three bedroom garden apartment perfectly located on Cavendish Road, NW6. Situated in a desirable tree lined residential road and ideally located in this increasingly popular area we have this spacious ground floor flat comprised of three double bedrooms, large open-plan kitchen dining area with double doors opening out to private garden, four bathrooms with three being en-suites. The property also has its own driveway for one car. Kilburn has excellent transport links with Kilburn Jubilee Line station and Brondesbury Overground trains running into central London within easy reach and Kilburn High Road, and is just under a short walk away.

- Three double bedrooms
- Ground floor flat
- Beautifully renovated
- Lovely garden
- Three bathrooms
- Share of freehold
- Great location
- Open-plan kitchen/dining
- Close to shops and transport
- Chain Free

Cavendish Road, NW6 7XP

Approx Gross Internal Area = 120.1 sq m / 1292 sq ft



Ground Floor

Ref

Copyright



The Floor plan is not to scale and measurements and areas shown are approximate and therefore should be used for illustrative purposes only. The plan has been prepared in accordance with the RICS code of Measuring Practice and whilst we have confidence in the information produced it must not be relied on. If there is any aspect of particular importance, you should

MONEY LAUNDERING REGULATIONS 2003: Intending purchasers will be asked to produce identification documentation at a later stage and we would ask for your co-operation in order that there will be no delay in agreeing the sale.

General: While we endeavour to make our sales particulars fair, accurate and reliable, they are only a general guide to the property and, accordingly, if there is any point which is of particular importance to you, please contact the office and we will be pleased to check the position for you, especially if you are contemplating travelling some distance to view the property.

Measurements: These approximate room sizes are only intended as general guidance. You must verify the dimensions carefully before ordering carpets or any built-in furniture.

Services: Please note we have not tested the services or any of the equipment or appliances in this property, accordingly we strongly advise prospective buyers to commission their own survey or service reports before finalising their offer to purchase.