



PHILLIPS & STILL

BRUNSWICK PLACE, HOVE
ASKING PRICE OF £230,000





This one-bedroom low er ground floor apartment offers an exciting opportunity to create your perfect home in the heart of Hove. Located on the sought-after Brunswick Place, just a short stroll from the vibrant Hove sea front, this property is ideal for those looking for coastal living with plenty of potential.

In need of modernisation, the apartment provides a blank canvas for renovation and personalisation. The interior features a well-proportioned bedroom, a spacious living area, and a separate kitchen, awaiting a contemporary touch to bring it up to date.

One of the standout features is the private patio garden, offering a peaceful outdoor space to relax or entertain. With excellent local amenities, including cafes, shops, and transport links nearby, this property presents an ideal investment or a perfect home for first-time buyers or downsizers.

This apartment is full of potential – perfect for someone looking to create a modern home in a prime Hove location!

LOWER GROUND FLOOR

BEDROOM

11' 10" x 10' 8" (3.61m x 3.25m)

SITTING ROOM

16' 5" x 9' 5" (5m x 2.87m)

KITCHEN

7' 6" x 6' 11" (2.29m x 2.11m)

OUTSIDE

REAR PATIO GARDEN



Brunswick Place, Hove BN3 1NB

Approximate Gross Internal Area = 42.1 sq m / 453 sq ft

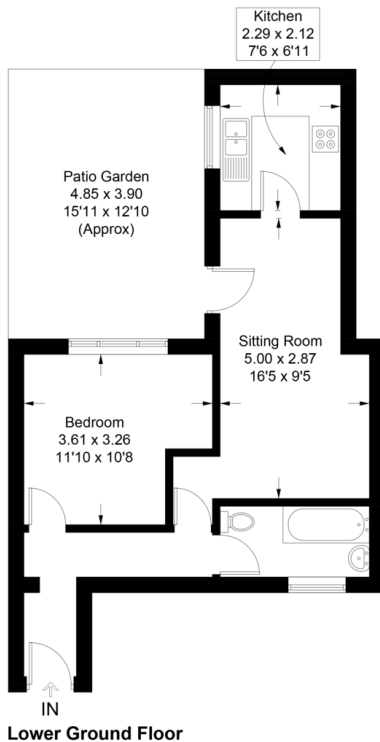


Illustration for identification purposes only, measurements are approximate, not to scale. Imageplansurveys © 2024

Score	Energy rating	Current	Potential
92+	A		
81-91	B		
69-80	C	70 C	79 C
55-68	D		
39-54	E		
21-38	F		
1-20	G		

Agents Note: Whilst every care has been taken to prepare these sales particulars, they are for guidance purposes only. All measurements are approximate and for general guidance purposes only and whilst every care has been taken to ensure their accuracy, they should not be relied upon and potential buyers are advised to recheck the measurements

