



# 74 Byron Street

Hove BN3 5BB

Asking Price Of £550,000

- THREE BEDROOMS
- BATHROOM
- KITCHEN
- LIVING ROOM

- DINING ROOM
- SOUTH FACING GARDEN
- POETS CORNER DISTRICT
- IN NEED OF MODERNISATION

Whitlock and Heaps bring to market this Victorian bay fronted property located in the favourable Poets Corner district of Hove within walking distance of Hove mainline station and seafront. The house offers tremendous potential to prospective buyers with the property being in need of modernisation throughout. Currently arranged with three bedrooms to the first floor and two reception rooms on the ground floor with a separate kitchen that leads onto the south facing patio garden. Being sold with no onward chain.

**OUTSIDE**  
**SOUTH FACING GARDEN**

**ENTRANCE HALL** Radiator, understairs storage.

**KITCHEN** Incorporating 1 1/2 bowl sink unit with drainer and mixer tap, adjacent laminate worksurface with cupboards and drawers under, matching eye level wall cupboards, inset four ring gas hob with concealed extractor, electric oven, space for fridge/freezer, UPVC double glazed window, radiator, tiled splashback.

**INNER LOBBY** Gas fired boiler, plumbing for washing machine, door to garden.

**CLOAKROOM** Comprising low level w.c, wash hand basin, UPVC double glazed window.

**LIVING ROOM** UPVC double glazed bay window, gas fire with brick surround, radiator.

**DINING ROOM** UPVC double glazed window, radiator.

**FIRST FLOOR**

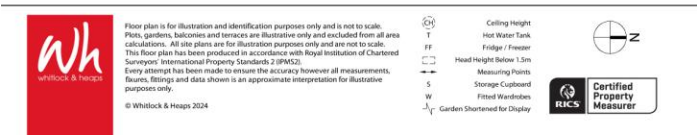
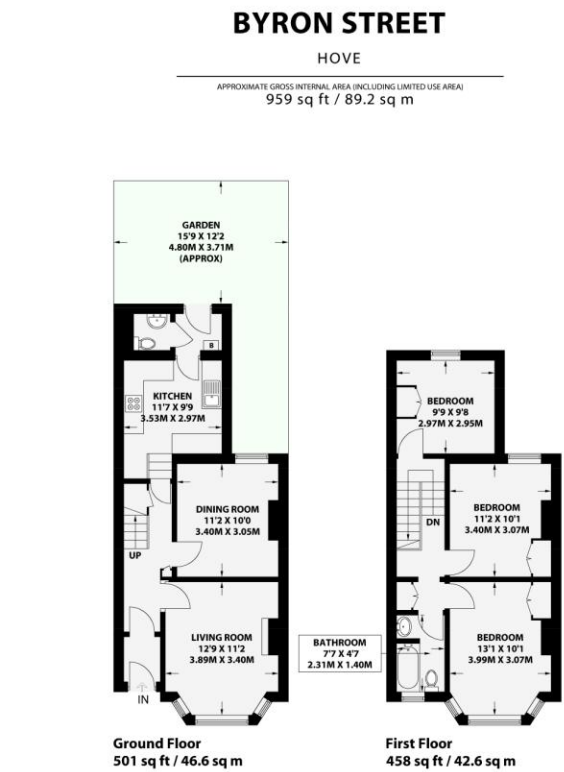
**LANDING** Hatch to loft space, fitted cupboard.

**BEDROOM 1** Fitted wardrobe, UPVC double glazed bay window, radiator.

**BEDROOM 2** Fitted cupboard, UPVC double glazed window, radiator.

**BEDROOM 3** Two UPVC double glazed windows, fitted cupboard, radiator.

**BATHROOM** Comprising panelled bath with shower over, wash hand basin with cupboard under, low level w.c, UPVC double glazed window.



Score	Energy rating	Current	Potential
92+	A		
81-91	B		
69-80	C		77 C
55-68	D	56 D	
39-54	E		
21-38	F		
1-20	G		

Portslade Branch  
48 Boundary Road, Portslade BN3 4EF  
portslade@whitlockandheaps.co.uk  
01273 422706

Hove Branch  
65 Sackville Road, Hove BN3 3WE  
hove@whitlockandheaps.co.uk  
01273 778577



**Disclaimer:** Whitlock & Heaps have produced these particulars in good faith and they are set out as a general guide. Accuracy is not guaranteed, nor do they form part of any contract. If there is any particular aspect of these details which you require any confirmation, please do contact us, especially if contemplating a long journey. All measurements are approximate. Fixtures and fittings, other than those mentioned above, to be agreed with the seller. Any services, systems or appliances at the property have not been tested.