

56 Bordesley Close

Birmingham

B9 5LX

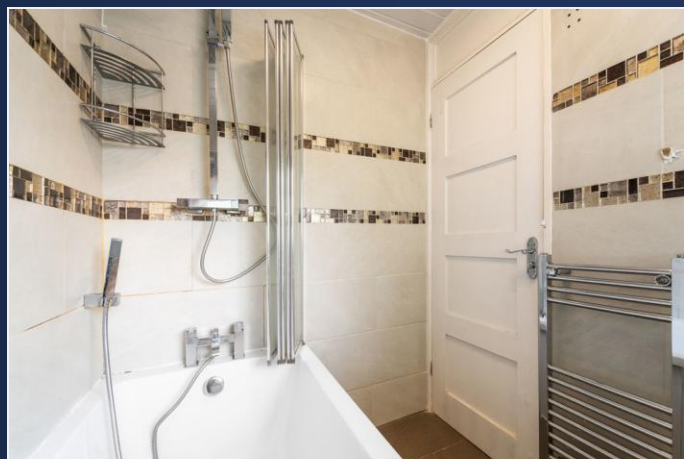
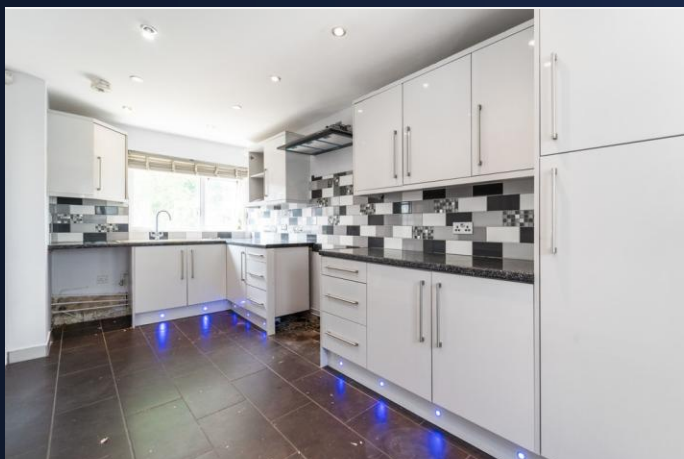
Offers Over **£170,000**

End-terrace House

Two Bedrooms

Conservatory

Paved Rear Yard



Property Description

DESCRIPTION James Laurence Estate Agents are pleased to offer this two bedroom end-terrace house located on Bordesley Close. The property comprises entrance hallway with a spacious kitchen and living room off, from the living room there is a conservatory with access to a paved garden to the rear of the property. The first floor features two double bedrooms and a bathroom with separate wc. Bordesley Close is located a short walk away from Heartlands hospital and local amenities.

JAMES LAURENCE ESTATE AGENTS "Agents Note: We have not tested any of the electrical, central heating or sanitary ware appliances. Purchasers should make their own investigations as to the workings of the relevant items. Floor plans are for identification purposes only and not to scale. All room measurements and mileages quoted in these sales particulars are approximate. All material information stated below has been provided by our client, but we would request all information to be verified by the purchaser's chosen solicitor.

Fixtures and Fittings: All those items mentioned in these particulars by way of fixtures and fittings are deemed to be included in the sale price. Others, if any, are excluded. However, we would always advise that this is confirmed by the purchaser at the point of offer.

Tenure: Freehold

Services: All mains' services are connected to the property.

Local Authority: Birmingham City Council

Council Tax Band: A

To complete our comprehensive service, James Laurence Estate Agents is pleased to offer the following:-

Free Valuation: Please contact the office on to make an appointment.

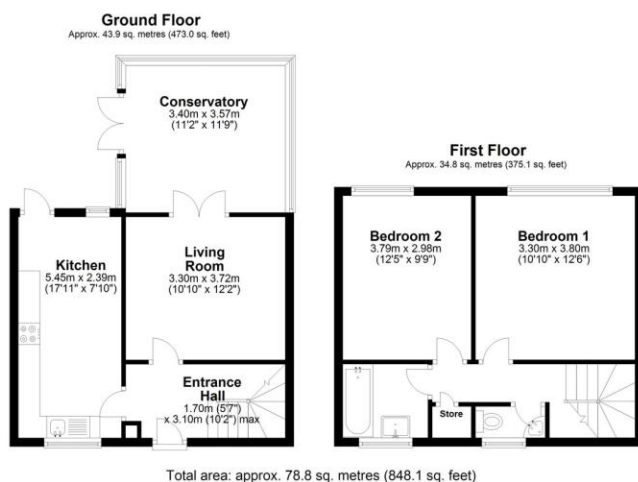
Residential Lettings and Management: If you are interested in letting out your property or are considering renting a property, please contact our office to find out further information.

Conveyancing: Very competitively priced rates agreed with our panel of total experienced and respected Solicitors. Please contact this office for further details.

Financial Services: James Laurence Estate Agents work with an independent Mortgage Service offering face to face mortgage advice to suit your needs. Please contact the office on to make a free appointment.



Floor Layout



Total approx. floor area 796 sq ft (74 sq m)

Whilst every attempt has been made to ensure the accuracy of the floor plan contained here, measurements of doors, windows, rooms and any other items are approximate and no responsibility is taken for any error, omission, or mis-statement. This plan is for illustrative purposes only and should be used as such by any prospective purchaser. The services, systems and appliances shown have not been tested and no guarantee as to their operability or efficiency can be given. Made with Metropix ©2019.

Energy Efficiency Rating			
Score	Energy rating	Current	Potential
92+	A		
81-91	B		85 B
69-80	C	71 C	
55-68	D		
39-54	E		
21-38	F		
1-20	G		

Edgbaston Branch

0121 4565454

edgbaston@jameslaurenceuk.com

5 Chad Square, Hawthorne Road, Edgbaston,
Birmingham, West Midlands, B15 3TQ



Agents Note: Whilst every care has been taken to prepare these sales particulars, they are for guidance purposes only. All measurements are approximate and for general guidance purposes only and whilst every care has been taken to ensure their accuracy, they should not be relied upon and potential buyers are advised to recheck the measurements