




Andrew Pearce
PINNER

HILLSIDE CRESCENT, NORTHWOOD, MIDDLESEX HA6 1RP



Nestled in the highly sought-after **Hillside Crescent**, this **charming three-bedroom detached bungalow** offers a unique blend of character, comfort, and exciting potential. Whether you're a growing family or a downsizer seeking a peaceful retreat, this delightful home provides both space and convenience in a prime location.

Upon stepping inside, you are welcomed by a **spacious and inviting entrance hallway**, setting the tone for the generous proportions found throughout the home. The bungalow boasts **three well-appointed bedrooms**, each offering ample space for relaxation and storage. The **bright and airy living room** serves as the heart of the home, providing a perfect setting for both family gatherings and quiet evenings. The **refitted kitchen** combines functionality with modern style, featuring sleek cabinetry, quality countertops, and ample space for meal preparation. The adjacent **contemporary bathroom** is well-designed, offering both comfort and convenience.

The highlight of this home is the **expansive, beautifully landscaped rear garden**, a true sanctuary for outdoor living. Whether you envision summer barbecues, a children's play area, or a tranquil retreat, this space offers endless possibilities to create your perfect outdoor haven. The **front driveway** provides generous off-street parking and leads to a **detached garage**, while the neatly manicured front lawn enhances the property's curb appeal.

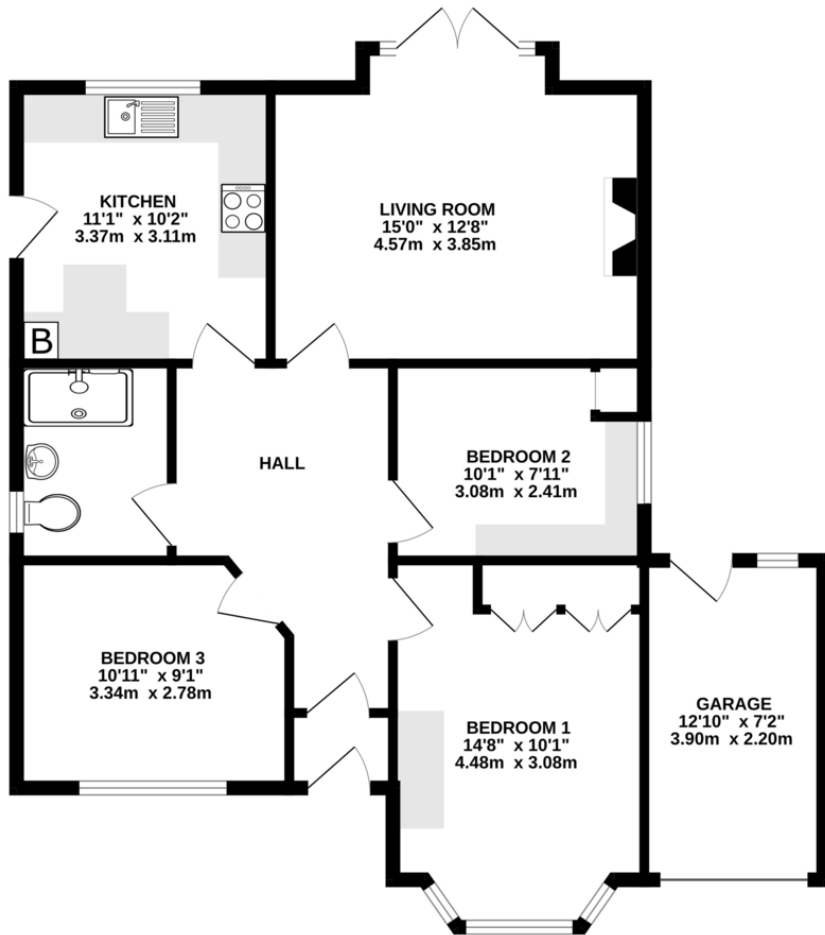
Key Features

- ✓ Detached Bungalow in a Prime Location
- ✓ Three Generously Sized Bedrooms
- ✓ Spacious & Bright Reception Room
- ✓ Refitted Modern Kitchen & Bathroom
- ✓ Large Landscaped Rear Garden
- ✓ Garage & Ample Driveway Parking
- ✓ Exciting Scope to Extend (Side & Rear)
- ✓ Close to Train Station & Highly Regarded Schools

This **rarely available, chain-free** home is a fantastic opportunity for those looking to move straight in while still having the potential to add their personal touch.



GROUND FLOOR
856 sq.ft. (79.5 sq.m.) approx.



TOTAL FLOOR AREA: 856 sq.ft. (79.5 sq.m.) approx.

Whilst every attempt has been made to ensure the accuracy of the floorplan contained here, measurements of doors, windows, rooms and any other items are approximate and no responsibility is taken for any error, omission or mis-statement. This plan is for illustrative purposes only and should be used as such by any prospective purchaser. The services, systems and appliances shown have not been tested and no guarantee as to their operability or efficiency can be given.
Made with Metropix ©2025

