

H&G

*Orbis*  
WHARF



# Orbis WHARF

---

A stylish, well presented, one bedroom apartment in this award winning riverside development.

Located on the third floor the apartment benefits from a private balcony offering river views.

Immaculately presented throughout the accommodation comprises a lovely and bright open plan kitchen/reception room, a double bedroom, bathroom and balcony.

The reception offers ample space for both dining and seating area with sliding doors to the balcony. The bedroom is generous double benefitting from built-in wardrobes.

The property is available to let on an unfurnished basis from January 2018.

£360.00 per week.





# Bridges WHARF

The development offers a 24hr concierge service, 5-star hotel and spa facility and secure underground parking.

The property is within easy reach of a range of shops, cafes and restaurants off Battersea Square, Wandsworth Town, Clapham Junction and the open spaces of Battersea Park. The nearest transport is provided by Clapham Junction mainline station offering services into Victoria and Waterloo. There is also a good range of bus services providing easy access to Chelsea, Victoria and the southern suburbs.

An MBNA Thames Clipper river bus service is now in operation at Plantation Wharf pier located just a few hundred yards away. The service offers a weekday timetable into Blackfriars and Canary Wharf to the east and Putney to the west.

## H&G

020 7352 2455

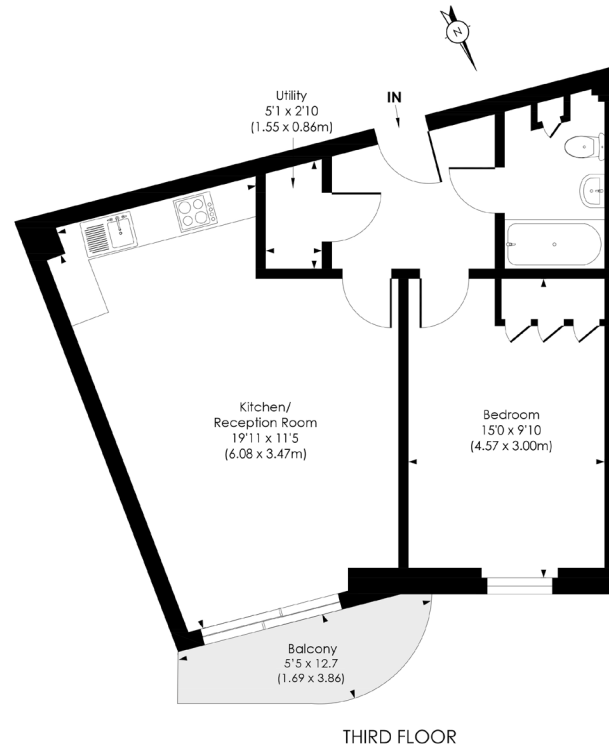
info@hgproperty.co.uk

www.hgproperty.co.uk

4 Vicentia Court, Bridges Wharf

## ORBIS WHARF - SW11

Approx. Gross Internal Floor Area  
557 Sq. ft/51.74 Sq. m



© Pixangle Property Marketing Ltd. info@pixangle.com Tel: 0208 870 2118

pixangle  
PROPERTY MARKETING

This floor plan has been prepared for the purpose of illustration only in accordance with the latest RICS code of measuring practice and is not to scale. All measurements and areas are approximate and whilst every effort has been made to ensure the accuracy of the plan contained here, no responsibility is taken for any error, omission or misstatement.