

**Head Office:**  
Dixon Kelley Estate Agents  
1 Penn Court  
Station Road, West Moors  
Dorset. BH22 0JJ

**Telephone: 01202 877511**

# DORSET PARK HOMES

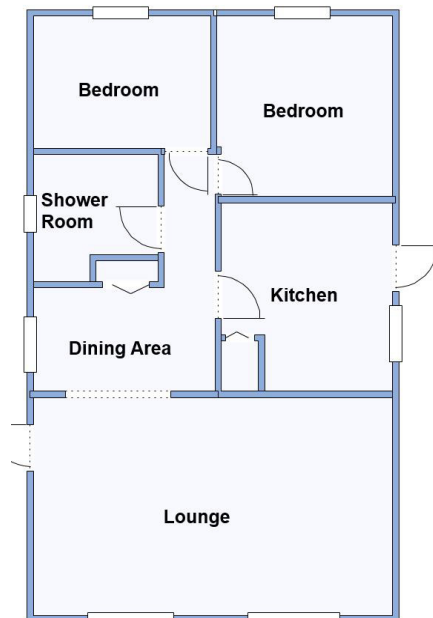
**DRAFT**

[www.dorsetparkhomes.com](http://www.dorsetparkhomes.com)

**67 Gladelands Park, Ferndown, Dorset. BH22 9BW**



**Popular Residential Park Close to Shops & Services**



This drawing has been prepared for diagrammatic purpose only. Not to scale

## 2 Bedroom Park Home approx 36' x 20'

### Accommodation & approximate room dimensions:

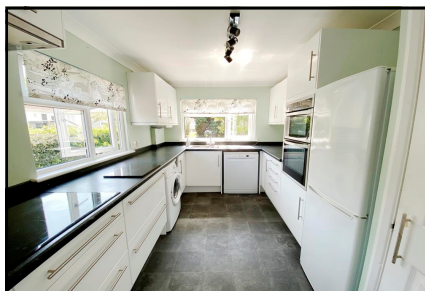
- Omar 'Colorado' Park Home circa 1975
- Entrance Hall
- Kitchen: approx 11'5" x 8'3". Range of base and wall cupboards. High level double oven. Electric hob & cooker hood. Space for dishwasher, washing machine & fridge/freezer. Cupboard housing combination gas boiler.
- Lounge: approx 22'4" x 10'8" max. Feature fireplace with illuminated display shelving. Bay window & double doors to garden..
- Bedroom 1: approx 11' x 9'5" Plus built-in wardrobes.
- Bedroom 2: approx 7'2" x 6'9" Plus fitted mirror fronted wardrobe.
- Shower Room: Walk in shower cubicle. Vanity wash basin & WC. Sky light window.
- Gas Central Heating & PVCu Double-Glazing
- On Site Parking for 1 car
- Secluded Garden with lawn & patio. Metal Shed
- Age Restriction 50+ No Pets
- Well maintained Residential Park close to major supermarkets, local amenities & bus services.

**Price £125,000**

**VIEWING STRICTLY BY APPOINTMENT WITH THE VENDOR'S AGENT Dorset Park Homes 01202 877511**

**IMPORTANT NOTE:** These particulars are believed to be correct but their accuracy is not guaranteed. They do not form part of any contract. Nothing in these particulars shall be deemed to be a statement that the property is in good structural condition or otherwise, nor that any of the services, appliances, equipment or facilities are in good working order or have been tested. Purchasers should satisfy themselves on such matters prior to purchase Ref.W05037

## Secluded Garden



**Pitch Fee: approx £194.72 per month**

**Subject to Annual Review**

**Council Tax Band: 'A'**

**Tenure: 1983 Mobile Homes Act Agreement**

*The recommended specialist in Park Home sales*  
Proprietor: Simon Dixon

