

Head Office:
Dixon Kelley Estate Agents
1 Penn Court
Station Road, West Moors
Dorset. BH22 0JJ

Telephone: 01202 877511

DORSET PARK HOMES

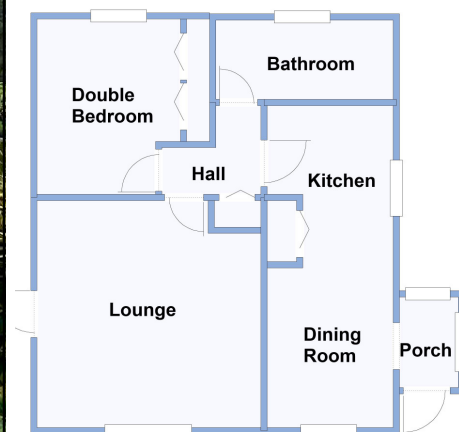
DRAFT

www.dorsetparkhomes.com

2a The Paddock, Oaktree Park, St Leonards, Nr Ringwood. BH24 2RW



1-Bedroom Twin Unit Park Home



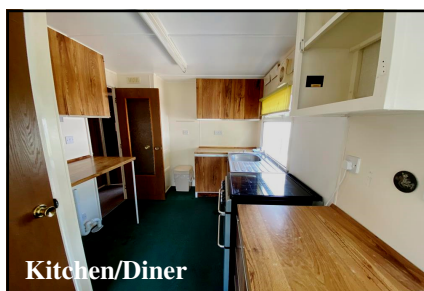
This drawing has been prepared for diagrammatic purpose only. Not to scale.

1-Bedroom Park Home - approx 20' x 20'

Accommodation & approximate room dimensions:

- Omar 'Princess' Park Home approx 1981
- Entrance Porch
- Kitchen/Diner: approx 17'3" x 7'. Range of floor and wall cupboards. Cooker point. Space for tall fridge/freezer & washing machine. Cupboard housing combination gas boiler. Ample room for dining suite.
- Lounge: approx 12'2" x 12'. Fireplace with gas fire fitted (untested). Door to garden.
- Inner Hall: Cloaks cupboard.
- Double Bedroom: approx 9'5" x 9'4" max, including fitted wardrobes.
- Bathroom: Panelled bath with Mira electric shower over. Pedestal wash basin. WC.
- Gas Central Heating (system untested)
- PVCu Double-Glazing
- Paved patio garden with Metal Shed
- Parking space for 1 car
- Age Restriction 50+ Pets Considered
- Well maintained Residential Park with active Members Club.
- Located between Ringwood & Ferndown & close to bus services.

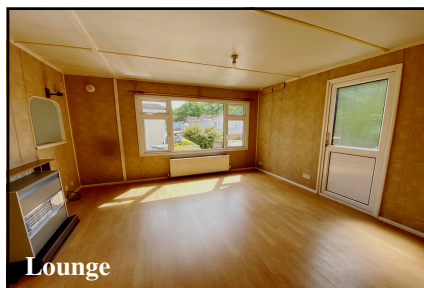
Popular 'Pet Friendly' Park



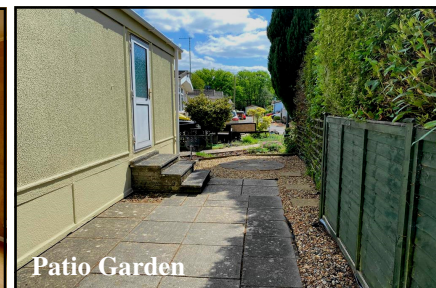
Kitchen/Diner



Dining Area



Lounge



Patio Garden

Price: £100,000

VIEWING STRICTLY BY APPOINTMENT WITH THE VENDOR'S AGENT Dorset Park Homes 01202 877511

IMPORTANT NOTE: These particulars are believed to be correct but their accuracy is not guaranteed. They do not form part of any contract. Nothing in these particulars shall be deemed to be a statement that the property is in good structural condition or otherwise, nor that any of the services, appliances, equipment or facilities are in good working order or have been tested. Purchasers should satisfy themselves on such matters prior to purchase Ref.W05038

Pitch Fee: approx £223.07 per cal month

Subject to Annual Review

Council Tax Band: 'A' Tenure: 1983 Mobile Homes Act Agreement

The recommended specialist in Park Home sales
Partner: Simon Dixon

