



FOR SALE

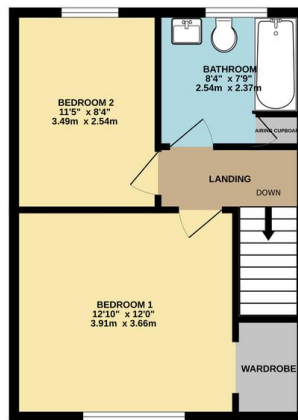
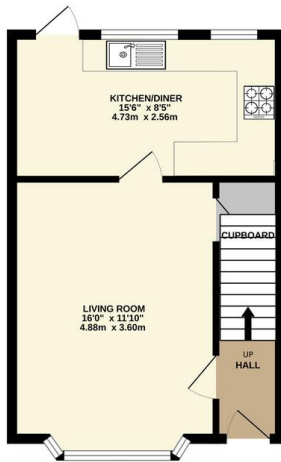
2 Bed Mid Terraced House in Markfield Road, Ratby LE6 0LQ
£219,950

A well presented two bedroom terraced home located in the highly sought after village of Ratby, set back from the main road on Markfield Road. This charming property offers a stylish kitchen and bathroom, a light and spacious lounge, and landscaped gardens to the front and rear. Additional benefits include off road parking. Early viewing is highly recommended. Contact Phillips George to arrange your appointment today.



GROUND FLOOR
371 sq.ft. (34.5 sq.m.) approx.

1ST FLOOR
391 sq.ft. (36.3 sq.m.) approx.



TOTAL FLOOR AREA - 762 sq.ft. (70.8 sq.m.) approx.
Whilst every attempt has been made to ensure the accuracy of the floorplan contained here, measurements of doors, windows, rooms and any other items are approximate and no responsibility is taken for any error, omission or mis-statement. This plan is for illustrative purposes only and should be used as such by any prospective purchaser. The services, systems and appliances shown have not been tested and no guarantee as to their operability or efficiency can be given.
Made with Metagen 02/20

EPC To Follow

- Terrace Property
- Two Bedrooms
- Highly Popular Location
- Ratby
- Set Back From The Main Road
- Well Presented Throughout
- Large Rear Garden
- Stylish Kitchen & Bathroom

Agents Note: Whilst every care has been taken to prepare these sales particulars, they are for guidance purposes only. All measurements are approximate are for general guidance purposes only and whilst every care has been taken to ensure their accuracy, they should not be relied upon and potential buyers are advised to recheck the measurements.

