



Earlsmead Road, London NW10

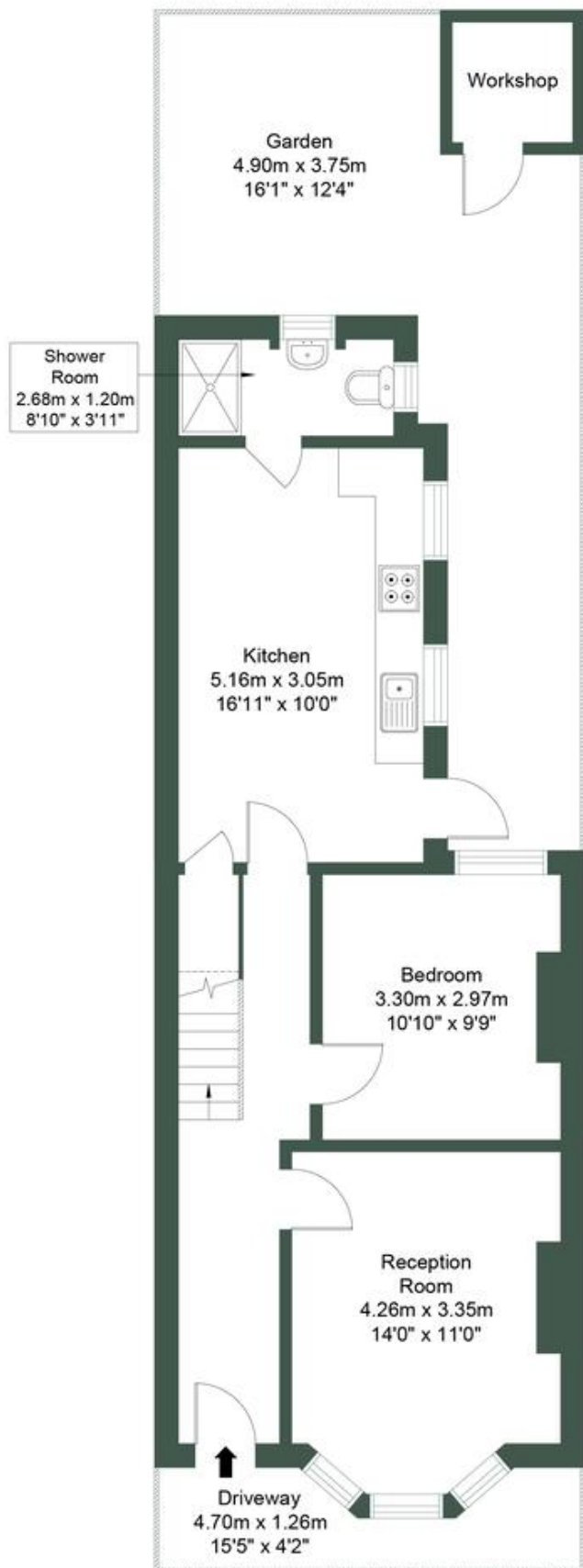
£850,000 Freehold

Welcome to Earlsmead Road — a charming end-of-terrace home offering 1,116 sq ft of well-proportioned living space in the heart of Kensal Green. This chain-free property presents an exciting opportunity for buyers looking to create their ideal home, with scope to extend into the side return and loft space, subject to the usual planning permissions. Currently arranged over two floors, the house features three bedrooms and a spacious layout that serves as a true blank canvas — ideal for those with vision and a desire to modernise. Whether you're looking to refurbish or reconfigure, the potential here is exceptional. Set in a sought-after residential street, the property is just a short walk from both Kensal Green and Kensal Rise stations, as well as the vibrant local cafés, shops and green spaces that make this area so popular. A rare opportunity to add value in a prime location, ready to be shaped into something special.

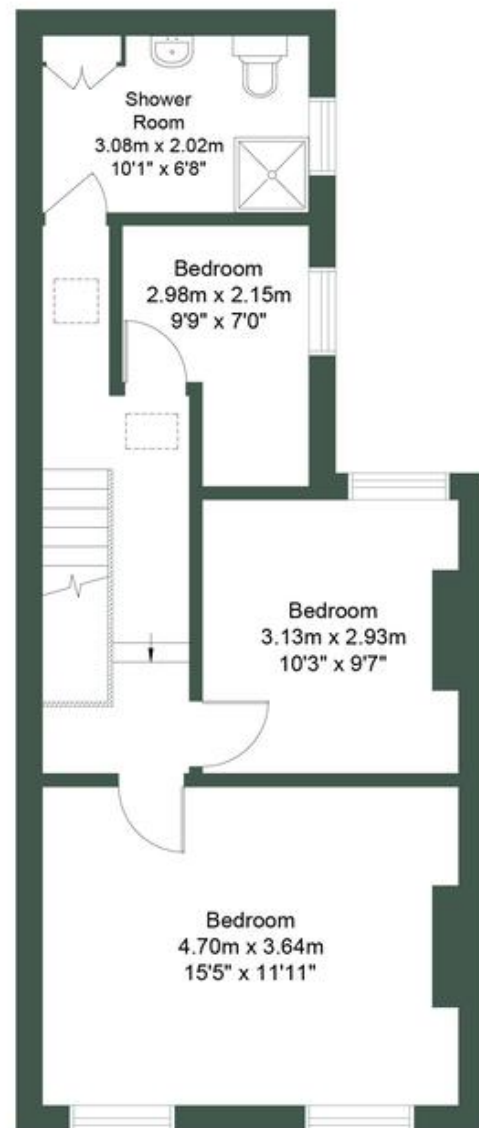
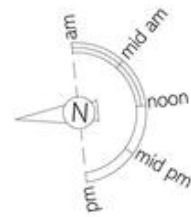
- End of terrace house
- Period home
- Three bedrooms
- Modernisation beneficial
- Private garden
- Potential to extend (STPP)
- Chain free
- Freehold
- Great location
- Close to shops and transports

EARLSMEAD ROAD, NW10

Approximate Gross Internal Area = 103.70 sq.m / 1116 sq.ft



Ground Floor



First Floor

M MILE

MONEY LAUNDERING REGULATIONS 2003: Intending purchasers will be asked to produce identification documentation at a later stage and we would ask for your co-operation in order that there will be no delay in agreeing the sale.

General: While we endeavour to make our sales particulars fair, accurate and reliable, they are only a general guide to the property and, accordingly, if there is any point which is of particular importance to you, please contact the office and we will be pleased to check the position for you, especially if you are contemplating travelling some distance to view the property.

Measurements: These approximate room sizes are only intended as general guidance. You must verify the dimensions carefully before ordering carpets or any built-in furniture.

Services: Please note we have not tested the services or any of the equipment or appliances in this property, accordingly we strongly advise prospective buyers to commission their own survey or service reports before finalising their offer to purchase.