

WESTBOURNE GROVE, NOTTING HILL, W11





Key Features

- Recently redecorated 2 bed 2 bath flat (with lift access)
- Large and bright reception area
- Contemporary open plan fully-equipped kitchen
- Spacious private balcony
- Excellent location

Description

A recently redecorated and exquisitely presented two bed two bath south facing apartment set on the third floor (with lift) of this purpose-built building in the heart of Notting Hill. The property comprises a bright and spacious reception room with dedicated dining area and direct access to the large private balcony, contemporary fully equipped open plan kitchen, master bedroom with ensuite shower room, second great size double bedroom with built-in wardrobe and modern family bathroom.

Situation

Longlands Court is just off the Portobello Road and is extremely well positioned for all of the amenities, shops and restaurants of Notting Hill. The closest underground station is Notting Hill Gate served by the District, Central and Circle lines.

**WESTBOURNE GROVE,
NOTTING HILL, W11**

Terms

Price: £675.00 per week

Furnished/Unfurnished: Furnished

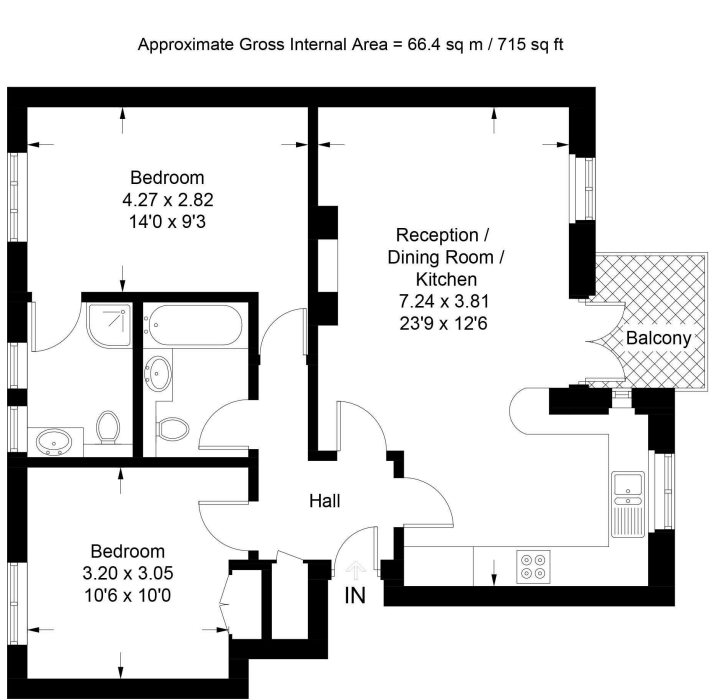
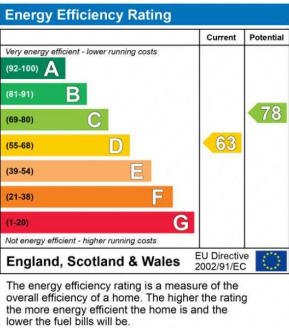
Local Authority/Council Tax: RBKC Band D £1,569.46

Viewing To view please call 020 7043 8431

Parking Residents Parking

Fees: M2 Property do not charge tenant administration fees.

We are members of The Property Ombudsman Redress Scheme for Residential Sales and Lettings (Membership No. D00776) and Client Money Protect (Membership No. CMP003231).



Third Floor
With Lift Access

Illustration for identification purposes only, measurements are approximate, not to scale.
Copyright © M2 Property Limited



We have prepared these property particulars for the general guidance of intending purchasers or lessees. They are not designed to constitute a part of an offer or contract. For the purpose of the Property Misdescriptions Act 1991 and subsequent amendments we have taken all reasonable steps to ensure the accuracy of the details contained herein, however such statements are not to be relied on as a representation of fact and do not constitute any warranty or representation by M2 Property or the Vendors or Lessors. All photographs, measurements, floor plans and distances are given as a guide and should be checked before purchasing furniture, carpets, fixtures or fittings. Intending Purchasers or Lessees should satisfy themselves as to the accuracy of each of the statements contained in these particulars and should rely solely upon their own judgement, inspection and enquiries before entering into any contract. The floor plan if shown is intended as a guide to layout only and must not be relied on for any other purpose. It is not to scale. The copyright of all details, photographs and floor plans contained in these property particulars remain exclusive to M2 Property.