



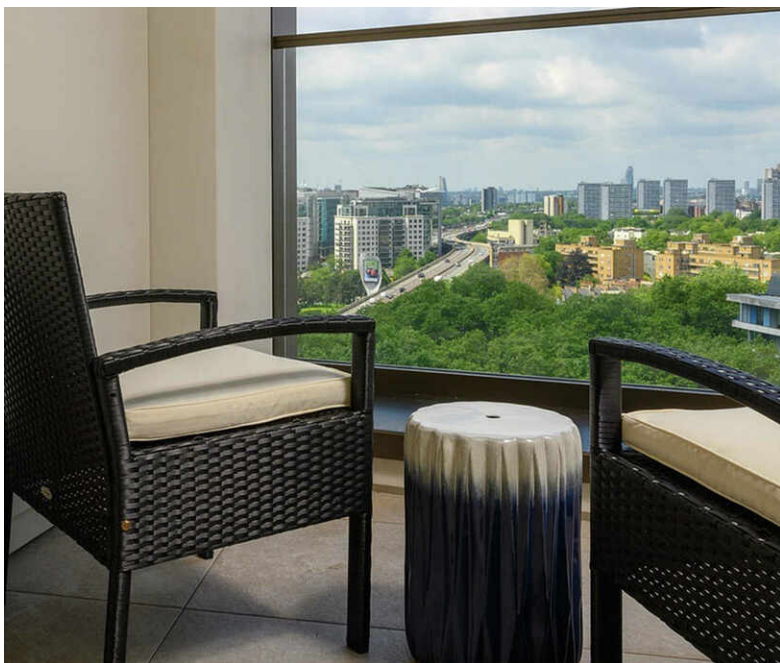
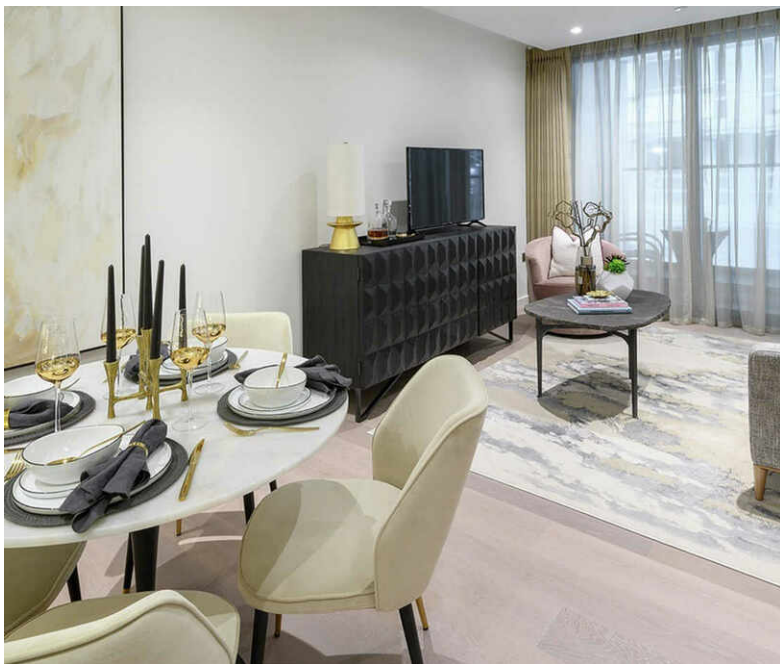
Q Investments  
International

1 Bedroom Apartment / Flat  
Marylebone

£955,000

More information: <https://qinvestments.london>





## Paddington, Marylebone

Bran New apartment perfectly positioned for the best of London, between the tranquil waterways of Little Venice and the stylish mansions of Marylebone, a renowned area for its timeless charm and refined lifestyle. This property offers elegant living with exceptional bespoke and designer interiors, beautifully crafted and innovative architecture, with panoramic floor to ceiling windows, refined and classical finishes and picturesque views towards Hyde Park and the City.

Luxury amenities include a state-of-the-art wellness suite featuring a steam room, sauna, treatment room, gym and an expansive swimming pool; as well as a private cinema room, 24-hour concierge, private dining area and a stylish residents lounge where residents can enjoy a relaxed atmosphere with friends and family. Conveniently connected to the rest of the city with an array of excellent transport hubs on your doorstep and just 10 minutes from Selfridges and Harrods.

- Fire/Security 24hr Concierge service and monitored CCTV, video entry system, mains supply smoke and heat detectors fitted with domestic sprinkler system
- Car Parking Underground car parking, right to park available by separate negotiation

