



Moorland Park, guide price £120,000

- Sale by Modern Auction (T&Cs apply)
- Subject to an undisclosed Reserve Price
- Buyers fees apply
- Three spacious bedrooms
- Council tax B
- End of terrace house
- Renovation opportunity
- EPC Rating: Awaited



 3  3  1



About the property

Presenting a rare opportunity to acquire this end of terrace house, currently listed for sale. This property requires renovation and presents an intriguing prospect for first-time buyers, investors, and families alike, who are ready to make their mark on a home.

This property encompasses three bedrooms, which include a master bedroom and another double bedroom, followed by a single bedroom. Each of these bedrooms offers ample space and the potential to create a comfortable and personalised living space.

The house also consists of two bathrooms, which, although not described in detail, present a blank canvas for you to design according to your taste. The presence of a single kitchen and one reception room further add to the functionality of the property. The reception room is particularly appealing with its garden view and direct access to the garden, making it an ideal space for hosting or simple relaxation amidst nature.

The property's unique features such as parking and a garden provide additional convenience and an opportunity for outdoor enjoyment.

Located in an area with excellent public transport links, the property is also in proximity to local schools, amenities, and green spaces. For those who enjoy an active lifestyle, the locale boasts walking and cycling routes.



Accommodation

Auctioneer's Comments

This property is offered through Modern Method of Auction. Should you view, offer or bid your data will be shared with the Auctioneer, iamsold Limited. This method requires both parties to complete the transaction within 56 days, allowing buyers to proceed with mortgage finance (subject to lending criteria, affordability and survey).

The buyer is required to sign a reservation agreement and make payment of a non-refundable Reservation Fee of 4.5% of the purchase price including VAT, subject to a minimum of £6600.00 including VAT. This fee is paid in addition to purchase price and will be considered as part of the chargeable consideration for the property in the calculation for stamp duty liability. Buyers will be required to complete an identification process with iamsold and provide proof of how the purchase would be funded.

The property has a Buyer Information Pack containing documents about the property. The documents may not tell you everything you need to know, so you must complete your own due diligence before bidding. A sample of the Reservation Agreement and terms and conditions are contained within this pack. The buyer will also make payment of no more than £349 inc. VAT towards the preparation cost of the pack. Please confirm exact costs with the auctioneer.

The estate agent and auctioneer may recommend the services of other providers to you, in which they will be paid for the referral. These services are optional, and you will be advised of any payment, in writing before any services are accepted. Listing is subject to a start price and undisclosed reserve price that can change.

Lounge

24' 9" x 11' 4" Max (7.54m x 3.45m Max)

Kitchen

12' 5" x 6' 9" (3.78m x 2.06m)

Porch

6' 4" x 4' 5" (1.93m x 1.35m)

Bedroom One

15' x 8' 5" Max (4.57m x 2.57m Max)

Bedroom Two

9' 5" Max x 8' 5" Max (2.87m Max x 2.57m Max)

Bedroom Three

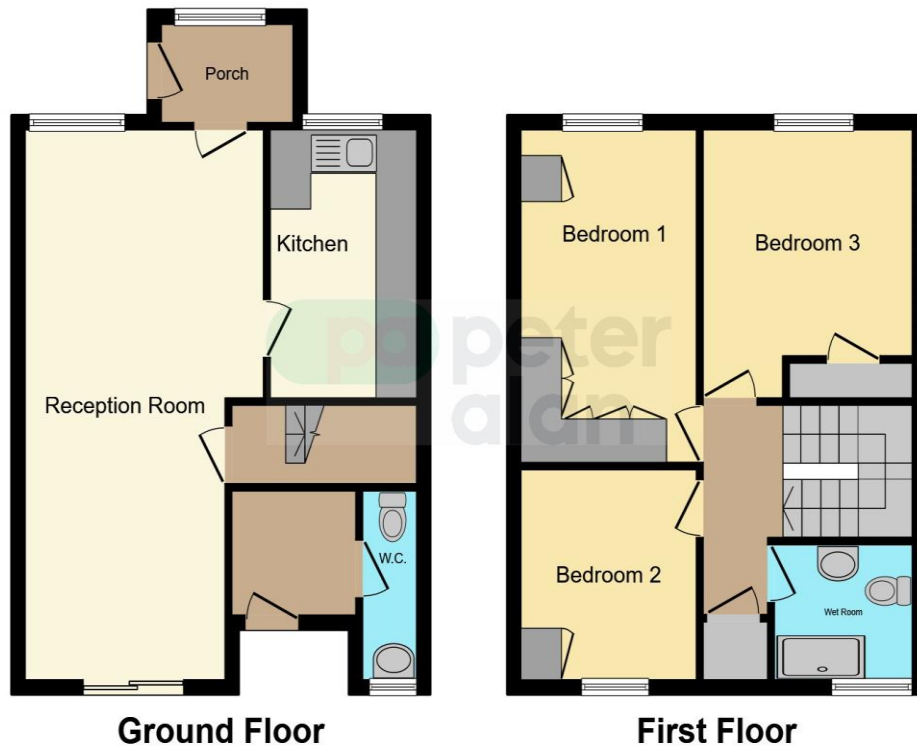
12' 1" Max x 10' 1" Max (3.68m Max x 3.07m Max)

Wet Room

01633 221892

newport@peteralan.co.uk

Floorplan



This floor plan is for illustrative purposes only. It is not drawn to scale. Any measurements, floor areas (including any total floor area), openings and orientation are approximate. No details are guaranteed, they cannot be relied upon for any purpose and they do not form part of any agreement. No liability is taken for any error, omission or misstatement. A party must rely upon its own inspection(s). Powered by www.focalagent.com



Important Information

Note while we endeavour to make our sales details accurate and reliable, if there is any point which is of particular interest to you, please contact the office and we will be pleased to confirm the position for you. We have not personally tested any apparatus, equipment, fixtures, fittings or services and cannot verify they are in working order or fit for their purposes. Nothing in these particulars is intended to indicate that carpets or curtains, furnishings or fittings, electrical goods (whether wired or not). Gas fires or light fittings or any other fixtures not expressly included form part of the property offered for sale. This computer generated Floorplan, if applicable, is intended as a general guide to the layout and design of the property. It is not to scale and should not be relied upon for dimensions. Tenure: We cannot confirm the tenure of the property as we have not had access to the legal documents. The buyer is advised to obtain verification from their solicitor or surveyor.

Peter Alan Limited is registered in England and Wales under company number 2073153, Registered Office is Cumbria House, 16-20 Hockliffe Street, Leighton Buzzard, Bedfordshire, LU7 1GN. VAT Registration Number is 500 2481 05. For activities relating to regulated mortgages and non-investment insurance contracts, Peter Alan Limited is an appointed representative of Connells Limited which is authorised and regulated by the Financial Conduct Authority. Connells Limited's Financial Services Register number is 302221. Most buy-to-let