

**Head Office:**  
Dixon Kelley Estate Agents  
1 Penn Court  
Station Road, West Moors  
Dorset. BH22 0JJ

# DORSET PARK HOMES

**DRAFT**

[www.dorsetparkhomes.com](http://www.dorsetparkhomes.com)

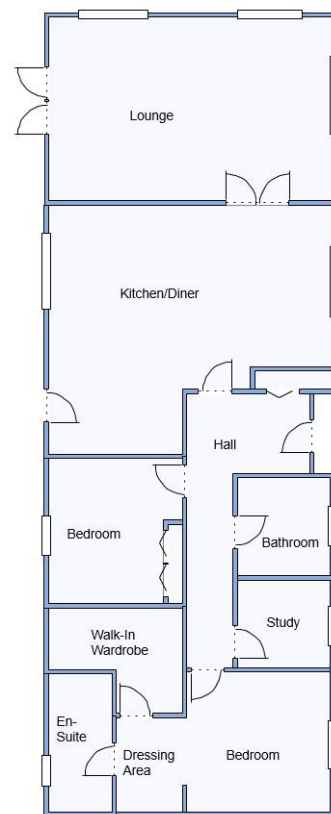
**Telephone: 01202 877511**

**22 Montevideo Park, Chickerell, Weymouth. DT3 4GF**



Prestige 'Grand Symphony' Park Home 62' x 22' manufactured 2017 with stylish interior design. Approx 1364 sq ft

**High Quality, Exceptionally Spacious Park Home**



This drawing has been prepared for diagrammatic purpose only. Not to scale.

## 2-Bedroom Park Home - approx 62' x 22'

### Accommodation & approximate room dimensions:

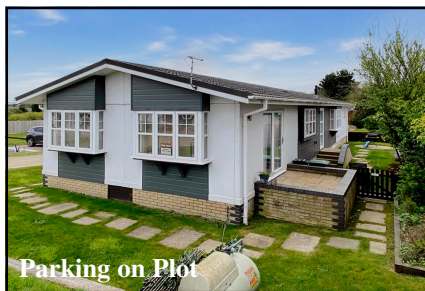
- **Spacious Hall:** Cloaks cupboard. Vaulted ceiling.
- **Kitchen/Diner:** approx 19'4" x 11'2" max. A superb room with a good range of floor and wall cupboards. Built-in double oven, hob & hood over. Integrated dishwasher, washing machine, American fridge/freezer. Water softener, water purifier & instant hot water. Wine chiller, 2 larder units, warming drawer & microwave. Granite worktops. Door to garden.
- **Lounge:** approx 21'2" x 14'. Feature fireplace. Vaulted ceiling. Double doors to Patio Area.
- **Study:** Fitted desk & storage cupboards
- **Bedroom 1:** approx 15'11" x 11' max PLUS
- **Large DRESSING ROOM**
- **Luxury En-Suite Shower Room.**
- **Bedroom 2:** approx 10'11" x 10'3". Fitted wardrobes
- **Luxury Jacuzzi Bathroom**
- **Gas Central Heating & PVCu Double-Glazing**
- **Electric Sky-Light Windows & LED Lighting**
- **Quality Fixtures & Fittings Throughout**
- **Corner plot with Delightful Private Garden**
- **Driveway for 'On-Plot' Parking**
- **Age Restriction 50+ Pets Considered**

**Price: £379,995**

**VIEWING STRICTLY BY APPOINTMENT WITH THE VENDOR'S AGENT Dorset Park Homes 01202 877511**

**IMPORTANT NOTE:** These particulars are believed to be correct but their accuracy is not guaranteed. They do not form part of any contract. Nothing in these particulars shall be deemed to be a statement that the property is in good structural condition or otherwise, nor that any of the services, appliances, equipment or facilities are in good working order or have been tested. Purchasers should satisfy themselves on such matters prior to purchase Ref.W04796

## Close to Coast



Parking on Plot



Superb Kitchen/Diner



Wonderful Lounge



Large Dining Area

**Pitch Fee: approx £214.58 per month including water**

**Subject to Annual Review**

**Council Tax Band: 'A'**

**Tenure: 1983 Mobile Homes Act Agreement**

*The recommended specialist in Park Home sales*  
Partner: Simon Dixon







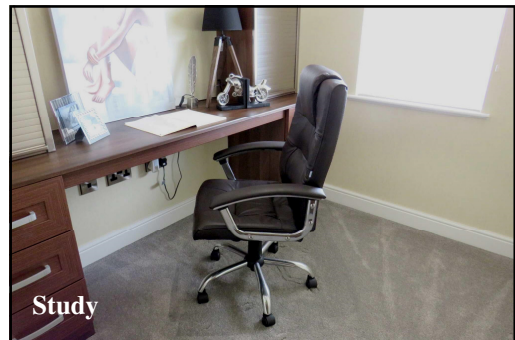
Large Lounge



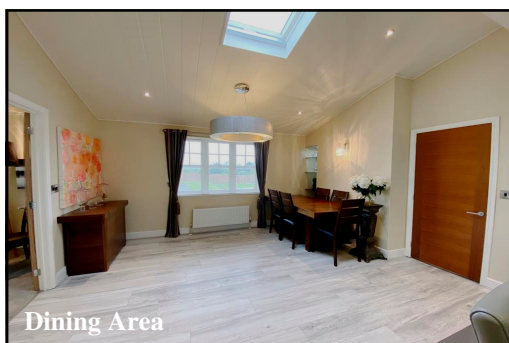
Lounge



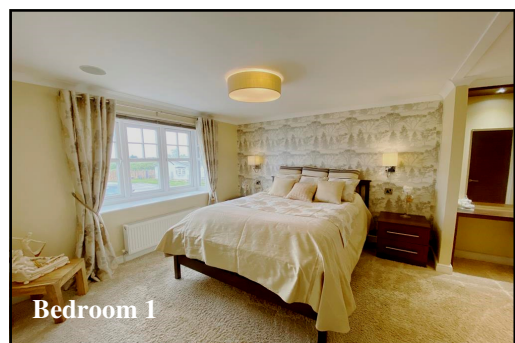
Spacious Hall



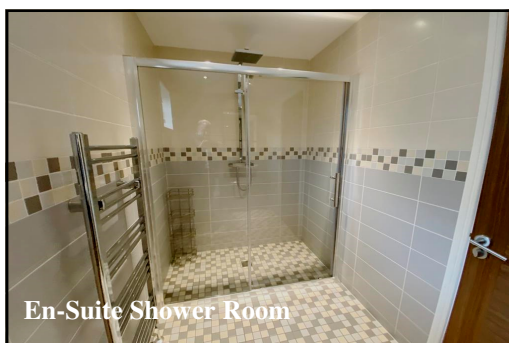
Study



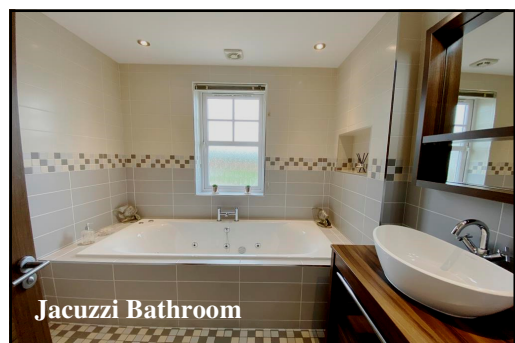
Dining Area



Bedroom 1



En-Suite Shower Room



Jacuzzi Bathroom



Stunning Kitchen/Diner with integrated appliances

**Prestige 'Grand Symphony' Park Home Approx 62' x 22' Manufactured 2021 High Quality Fixtures & Fittings throughout Vaulted Ceilings with LED lighting & Sky Lights window. Corner Plot with Private Garden & Parking on Plot. Quality Residential Park close to nature walks, local amenities and outstanding coastline & the Jurassic Coastal Path.**