



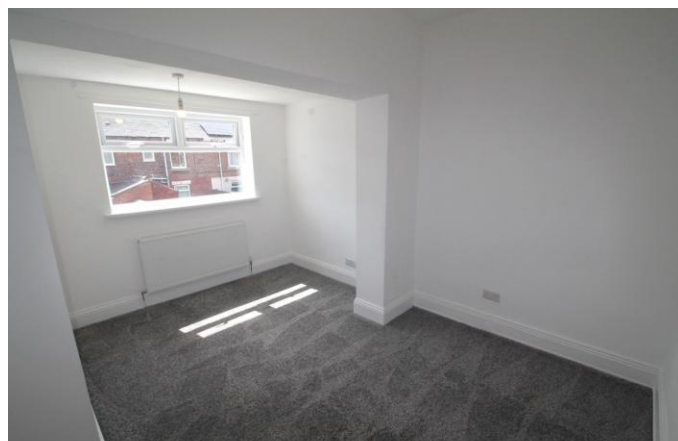
49 Spen Street (E)

Stanley
County Durham
DH9 7NJ

£650 pcm

Two Bedroom Terraced
Available Immediately
Enclosed Rear Yard
Recently Refurbished
Central Location
Close to Local Amenities





Safe & Secure Properties are delighted to welcome to the market this recently refurbished two bed mid-terraced property located within Spen Street, Stanley. This property offers a central location to Stanley town center and benefits from a range of local amenities and excellent transport links to both Durham and Newcastle.

Viewings are highly recommended on this property.

ENTRANCE HALL

Double glazed entrance door, double glazed window to front and staircase to fire floor.

LIVING ROOM

15' 6" x 16' 9" (4.73m x 5.12m) Double glazed window to front, understairs storage cupboard and radiator.

KITCHEN

5' 7" x 15' 11" (1.71m x 4.87m) Modern kitchen comprising of fitted wall and base units, work surfaces, single drainer sink, integrated electric hob & oven, space for washing machine, part tiled walls, combination boiler, double glazed door to rear, double glazed window to rear and radiator.

LANDING

Access to bedrooms, bathroom and loft space.

BATHROOM

White three piece suite comprising of panelled

bath, with shower over, pedestal wash hand basin, low level wc, tiled walls, heated towel rail and double glazed window to rear.

BEDROOM ONE

7' 6" x 16' 9" (2.29m x 5.12m) Double glazed window to front and radiator.

BEDROOM TWO

13' 3" x 10' 4" (4.06m x 3.15m) Double glazed window to rear and radiator.

REAR YARD

Rear enclosed yard, paved area and off street parking.



Local Authority
Council Tax Band
EPC Rating

Durham City Council

A

D

Houghton le Spring

24-25 Westbourne Terrace
Houghton Le Spring
Tyne And Wear
DH4 4QT

Contact

0191 3854477
info@safeandsecureproperties.c
o.uk
safeandsecureproperties.co.uk

Agents Note: Whilst every care has been taken to prepare these particulars, they are for guidance purposes only. All measurements are approximate and are for general guidance purposes only and whilst every care has been taken to ensure their accuracy, they should not be relied upon and potential buyers/tenants are advised to recheck the measurements.