



10 MEIRWEN DRIVE
CULVERHOUSE CROSS
CARDIFF CF5 4ND

ASKING PRICE OF
£399,950



DETACHED PROPERTY



4



2



3



1

**** SPACIOUS FOUR BEDROOM DETACHED FAMILY HOUSE ** LARGE OPEN PLAN LIVING WITH MODERN KITCHEN **** A well presented, spacious four bedroom detached family house, located in a convenient location close to local shops and transport links. Entrance hallway, cloakroom, L-shaped kitchen, dining & family room with folding doors to the rear garden, spacious lounge, utility room with side lean to storage. To the first floor there are four bedrooms, principal bedroom with quality ensuite shower room and a separate modern family bathroom, newly fitted bespoke Oak and glass panelled staircase. Gas central heating. Attractive rear garden with paved stone patio and lawn, brick built storage. Driveway to front. EPC Rating: B

TENURE: FREEHOLD

COUNCIL TAX BAND: F

FLOOR AREA APPROX: 1,539 SQ FT

VIEWING: STRICTLY BY APPOINTMENT

LOCATION

A popular private residential development situated in a convenient location near the Culverhouse Cross Retail Park, City Centre and Cardiff International Airport, with good transport links to the M4 and schools at all levels.

ENTRANCE HALL

Approached via a upvc entrance door leading to the entrance hallway, newly fitted bespoke oak and glass framed staircase to first floor, tiled flooring and radiator.

CLOAKROOM

Tiled flooring, low level WC, wash hand basin and spotlights in ceiling.

KITCHEN/DINING AND FAMILY ROOM

27' 2" x 26' 2" (L-shaped) (8.30m x 7.98m)

Modern fitted kitchen well appointed along one side in light high gloss fronts beneath worktop surfaces, inset moulded sink with side drainer, inset 'Neff' oven and grill, inset dishwasher with matching front, central island with 'Neff' induction hob with extractor hood above, range of fitted drawers and breakfast bar seating area, matching range of eye level wall, space for American style fridge freezer, the kitchen opens to a family dining area with folding doors leading to the rear garden, three velux window to the rear pitched room and further space for family seating area, tiled flooring with underfloor heating. Opening to the lounge.

LOUNGE

16' 5" x 11' 4" (5.01m x 3.46m)

Open plan with kitchen family room. Approached via two steps leading to the spacious lounge area, solid wood flooring with under floor heating and window to front.

UTILITY ROOM/KITCHEN 2

11' 11" x 9' 4" (3.64m x 2.86m)

A spacious utility/ kitchen with a range of units to three sides in light fronts beneath granite worktop surfaces with inset sink and worktop side drainer, inset five ring gas hob with extractor hood above, plumbing for washing machine and space for tumble dryer, matching range of eye level wall cupboards, combi gas central heating boiler concealed in cupboard with under floor heating pipe work. Recessed spotlights. Door to side lobby with doors to front and rear.

FIRST FLOOR

LANDING

Approached via an easy rising staircase leading to the first floor landing. Engineered Oak wood flooring.

BEDROOM ONE

15' 5" x 8' 5" (max)(4.71m x 2.59m)

Overlooking the front, a good sized double bedroom, built in wardrobes and door to ensuite. Engineered Oak wood flooring.

EN SUITE SHOWER ROOM

Fully tiled shower cubicle, tiled flooring, wash hand basin, low level WC. UPVC double glazed window to side and radiator.

BEDROOM TWO

15' 2" x 10' 10" (4.63m x 3.31m)

Aspect to front & rear, a good sized second double bedroom, laminate flooring. Engineered Oak wood flooring.

BEDROOM THREE

9' 6" x 8' 7" (2.91m x 2.63m)

Aspect to rear, radiator. Engineered Oak wood flooring.



10 MEIRWEN DRIVE, CULVERHOUSE CROSS, CARDIFF CF5 4ND

BEDROOM FOUR

10' 1" x 6' 6" (3.09m x 2.00m)

Aspect to rear, radiator. Engineered Oak wood flooring.

BATHROOM

6' 3" x 5' 6"(max) (1.92m x 1.70m)

Modern white suite comprising low level wc, UPVC double glazed window to side, panelled bath, vanity wash hand basin, inset spotlights and tiled walls.

FRONT GARDEN

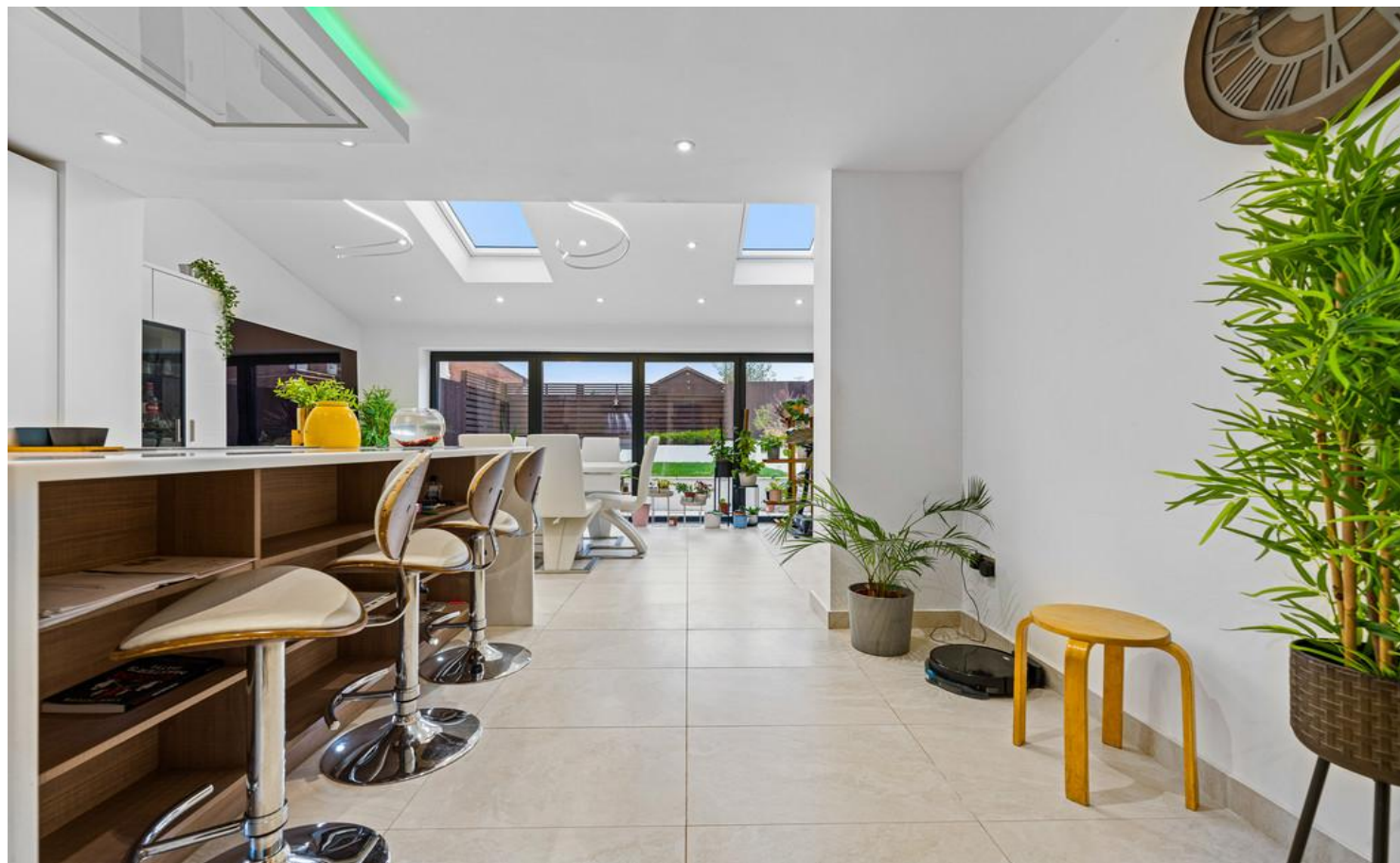
Driveway for two cars.

REAR GARDEN

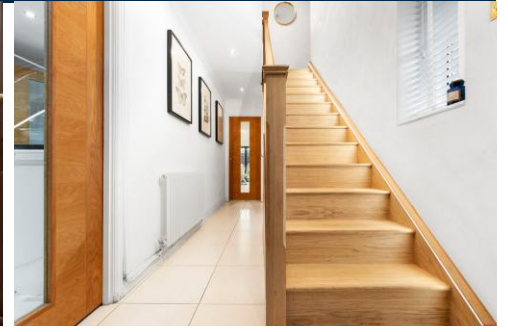
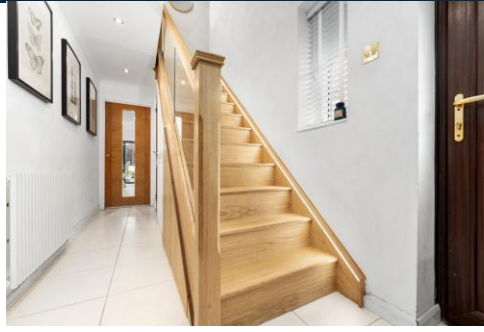
Delightful paved stone patio leading onto a shaped area of lawn with raised flower beds, brick built storage shed, outside lighting and enclosed with fencing.



10 MEIRWEN DRIVE, CULVERHOUSE CROSS, CARDIFF CF5 4ND



10 MEIRWEN DRIVE, CULVERHOUSE CROSS, CARDIFF CF5 4ND

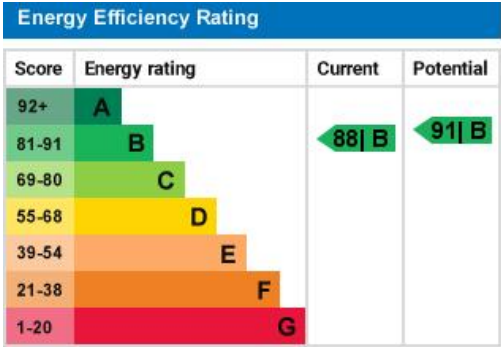


10 MEIRWEN DRIVE, CULVERHOUSE CROSS, CARDIFF CF5 4ND



TOTAL FLOOR AREA : 1539 sq.ft. (143.0 sq.m.) approx.

Whilst every attempt has been made to ensure the accuracy of the floorplan contained here, measurements of doors, windows, rooms and any other items are approximate and no responsibility is taken for any error, omission or mis-statement. This plan is for illustrative purposes only and should be used as such by any prospective purchaser. The services, systems and appliances shown have not been tested and no guarantee as to their operability or efficiency can be given.
Made with Metropix ©2024



RADYR 029 2084 2124

Radyr, 6 Station Road, Radyr, Cardiff, South Glamorgan, CF15 8AA



Important Notice: These particulars are prepared for guidance only and do not form whole or any part of any offer or contract. Whilst the particulars are given in good faith, they are not to be relied upon as being a statement or representation of fact. They are made without responsibility on the part of MGY Ltd or Vendor/lessor and the prospective purchaser/lessee should satisfy themselves by inspection or other wise as to their accuracy. Neither MGY Ltd nor anyone in their employ, or the vendor/lessor, imply, make or give any representation/warranty whatsoever in relation to this property.

MGY.CO.UK