



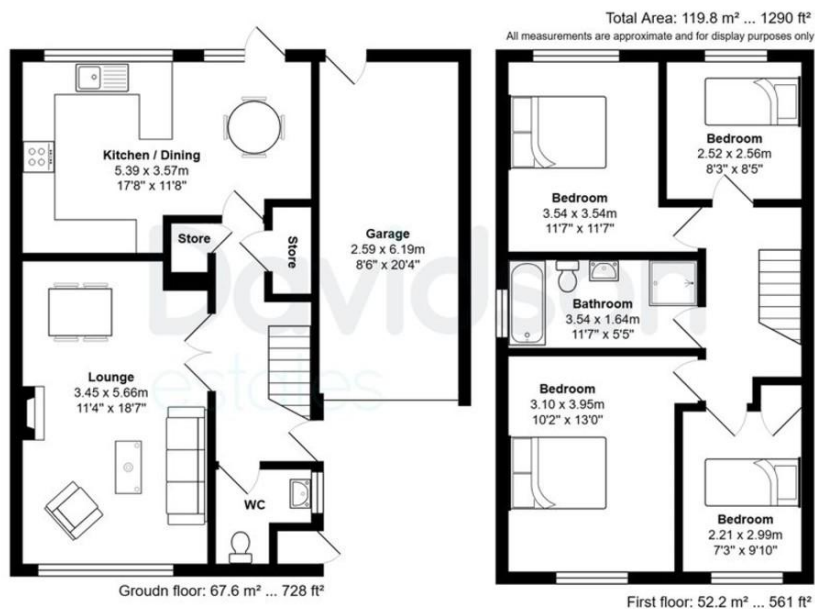
# NIALL CLOSE

BIRMINGHAM, B15 3LU

£580,000  
FREEHOLD

Detached Family Home | Edgbaston | Four Bedrooms | Driveway and Garage | Substantial Garden | Prestigious Calthorpe Estate | Freehold | No Chain

Davidson



Floorplan measurements are for illustrative purpose only. Floor plan by www.sebastiano.co.uk.

Score	Energy rating	Current	Potential
92+	A		
81-91	B		83 B
69-80	C		
55-68	D	60 D	
39-54	E		
21-38	F		

# Davidson

OFFICE  
 14 Frederick Road  
 Birmingham  
 West Midlands  
 B15 1JD

0121 455 7727  
 info@davidsonstates.co.uk  
 www.davidsonstates.co.uk

Agents Note: Whilst every care has been taken to prepare these particulars, they are for guidance purposes only. All measurements are approximate and are for general guidance purposes only and whilst every care has been taken to ensure their accuracy, they should not be relied upon and potential buyers/tenants are advised to recheck the measurements