



Two Bedroom Mid Terrace Cottage Kingston Upon Thames, KT2 6JF £565,000 Freehold

A picture perfect two bedroom Victorian Cottage situated in the North Kingston within easy walking distance of local parks and the River Thames, also within catchment over many sought after schools.

The property is presented in immaculate order throughout having been refurbished by the current owners to a high standard.

Private courtyard style rear garden.

vendors are suited with no onward chain, Viewings are highly recommended

WWW.STACKANDBONNER.COM

020 8974 8844

sales@stackandbonner.com



York Road, KT2
 Approximate Gross Internal Area
64.5 sq m / 695 sq ft
 (Including restricted height
 under 1.5m [-----])

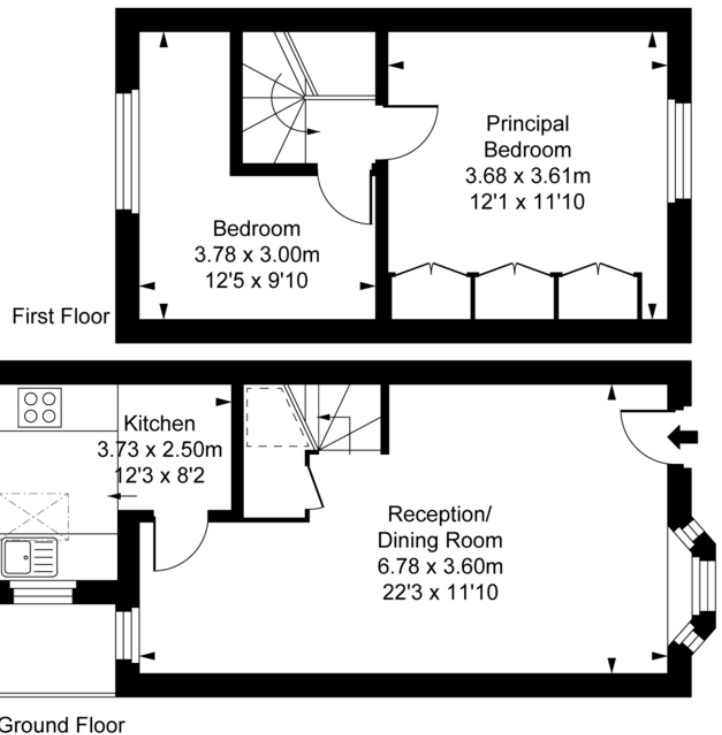


ILLUSTRATION FOR IDENTIFICATION PURPOSES ONLY
 ALL MEASUREMENTS AND AREA FIGURES SUPPLIED BY OTHERS, ACCURACY IS NOT GUARANTEED.
 THIS PLAN MUST NOT BE REPRODUCED BY ANY OTHER PERSON WITHOUT PERMISSION

- Two Bedroom Victorian Cottage
- Modern Re-Fitted Kitchen with Built-in Appliances
- Modern Fitted Bathroom Suite
- Refurbished Through Out to A High Standard
- Gas Central Heating Via Combination Boiler
- Double Glazed Windows
- Private Courtyard Style Rear Garden
- Vendor Suited with No Onward Chain
- Council Tax: Band D - £2,488.35 per annum