



25 Hartley House, Longfield Estate, Bermondsey, London, SE1 5RY

The property is being sold with the benefit of a lease over 100 years, a private balcony and residents parking. Located in SE16 the property will be attractive to buy to let investors and commuters....

Offers in excess of £277,000

This two double bedroom flat is located on one of the top floors in the building providing panoramic views from the private balcony.

The communal grounds have been recently refurbished.

There is on site residents parking and lifts in the block.

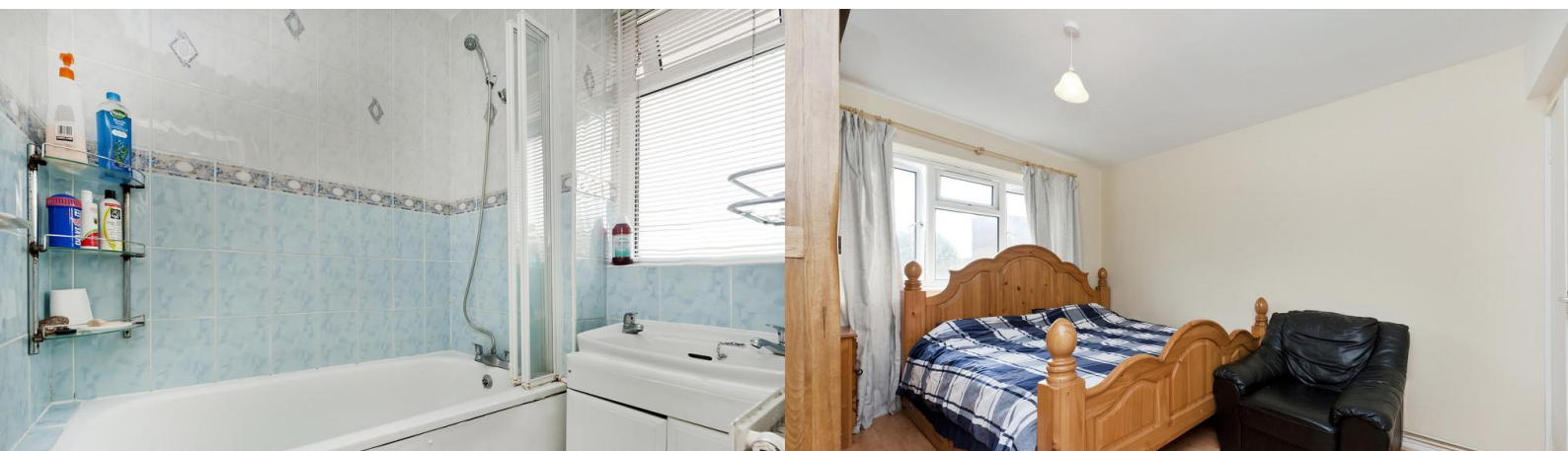
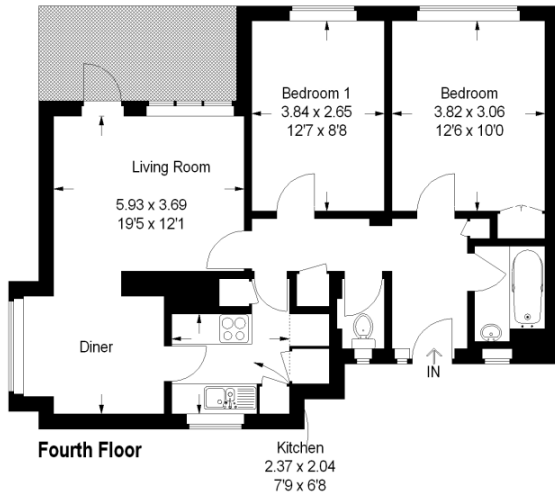
The property is located off Southwark Park (a main road) where access to transport can be found.

There are several local parks located in the vicinity such as Burgess Park, Southwark park and Bermondsey spa gardens.

Please contact us to arrange your viewing on 0208 6907766.

Hartley House, SE1

Approximate Gross Internal Area :-
65 sq m / 700 sq ft



Agents Note: Whilst every care has been taken to prepare these sales particulars, they are for guidance purposes only. All measurements are approximate and are for general guidance purposes only and whilst every care has been taken to ensure their accuracy, they should not be relied upon and potential buyers are advised to recheck the measurements before committing to any expense. Floor plans are not to scale. Internal photographs are reproduced for general information and it must not be inferred that any item shown is included in the property. The photographs may only represent part of the property and as they appeared at the time of being taken. No guarantee can be given as to the working condition of the various services and appliances. The agent has not tested any apparatus, equipment, fixtures or fittings or services and it is in the buyer's interests to check the working condition of any appliances.

Office

1-2 The Parade
Felbridge House
Dog Kennel Hill
London
SE22 8BQ

020 3199 3492