



## Palace View, Bromley | £610,000 FREEHOLD

Situated on the ever popular Palace Estate we are delighted to offer for sale this exceptionally well maintained three bedroom family home that benefits from being a 10 minute walk to Bromley South station and all amenities of the nearby town centre. These 1930's character homes are highly sought by young growing families in particular due to the great potential to further extend them subject to planning permission and the light and spacious living accommodation that they offer. This property briefly comprises a large lounge, dining room, kitchen and conservatory on the ground floor and on the first floor three well proportioned bedrooms and a family bathroom. Of particular note is the south facing 60ft rear gardens that have been lovingly cared for and with a double garage to the rear your earliest attention to view is well advised to avoid disappointment.



- Three bedrooms
- Terraced house
- Popular Palace Estate
- Large conservatory
- Potential to extend subject to PP
- Short walk to Bromley South

LOUNGE 16' 8" x 12' 6" (5.08m x 3.81m)

DINING ROOM 13' 10" x 10' 10" (4.22m x 3.3m)

KITCHEN 9' 5" x 7' 11" (2.87m x 2.41m)

CONSERVATORY 17' 5" x 7' 10" (5.31m x 2.39m)

BEDROOM 1 16' 6" x 9' 8" (5.03m x 2.95m)

BEDROOM 2 14' x 9' 8" (4.27m x 2.95m)

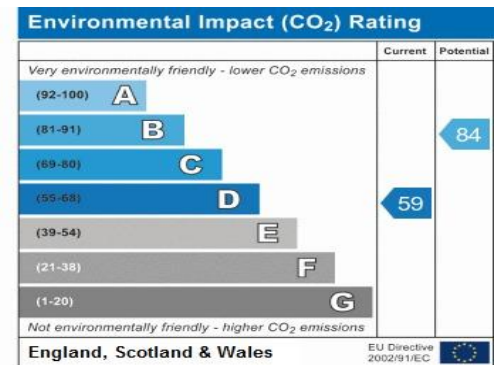
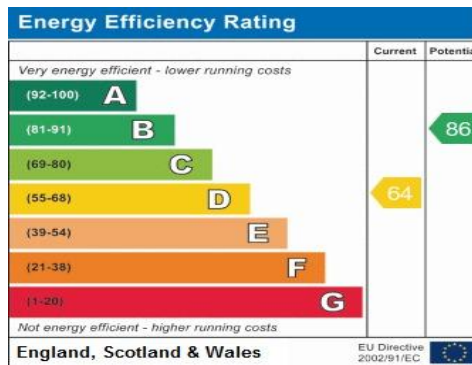
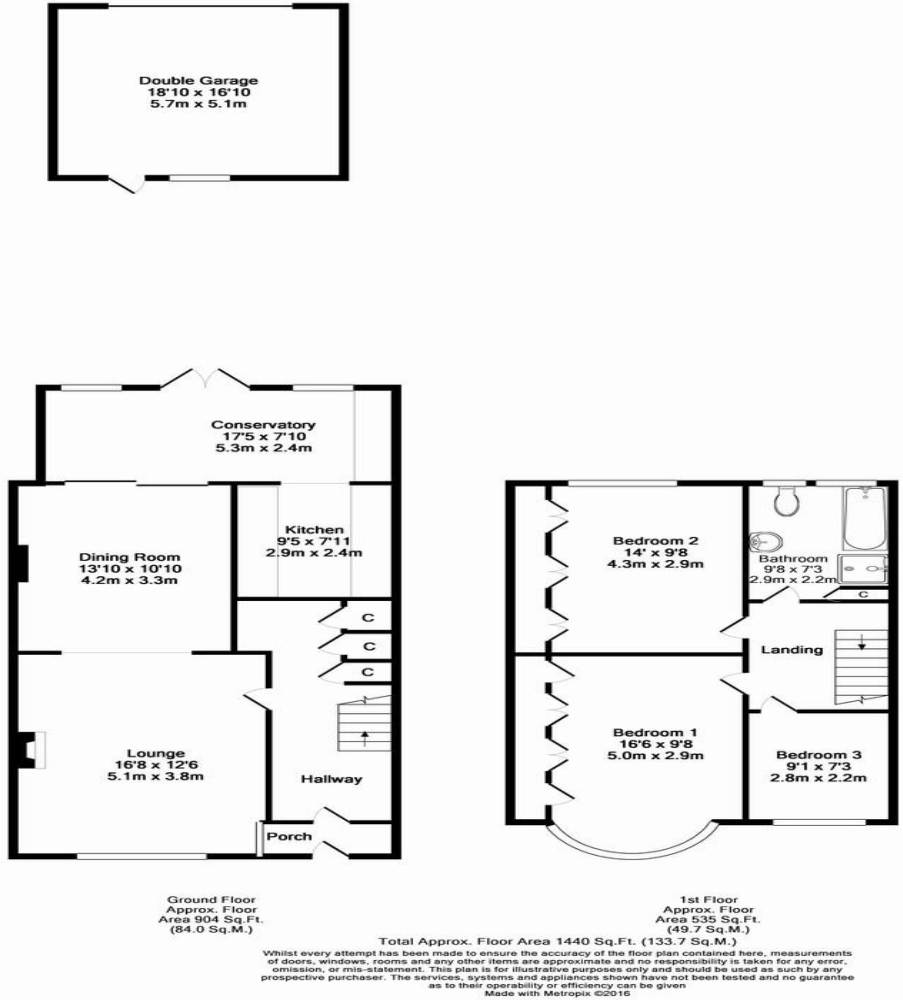
BEDROOM 3 9' 1" x 7' 3" (2.77m x 2.21m)

BATHROOM 9' 8" x 7' 3" (2.95m x 2.21m)

**GARDEN** Approx 60ft beautifully well maintained, landscaped garden with flourishing mature borders and a south facing sun terrace.

**DOUBLE GARAGE** 18' 10" x 16' 10" (5.74m x 5.13m)

**Directions:** From our Bromley office turn right along Widmore Road towards Bromley and take the fourth turning on the left onto South View and at the end of the road turn right onto Rochester Avenue. Proceed along this road until Murray Avenue on the left and continue down the road until Palace View on the right hand side.



NOTICE. Whilst every effort has been made to ensure the accuracy of these sales details, they are for guidance purposes only and prospective purchasers or lessees are advised to seek their own professional advice as well as to satisfy themselves by inspection or otherwise as to their correctness. Some images have been taken using a wide angle lens. No representation or warranty whatever is made in relation to this property by Coady Phillips or its employees nor do such details form part of any offer or contract.