

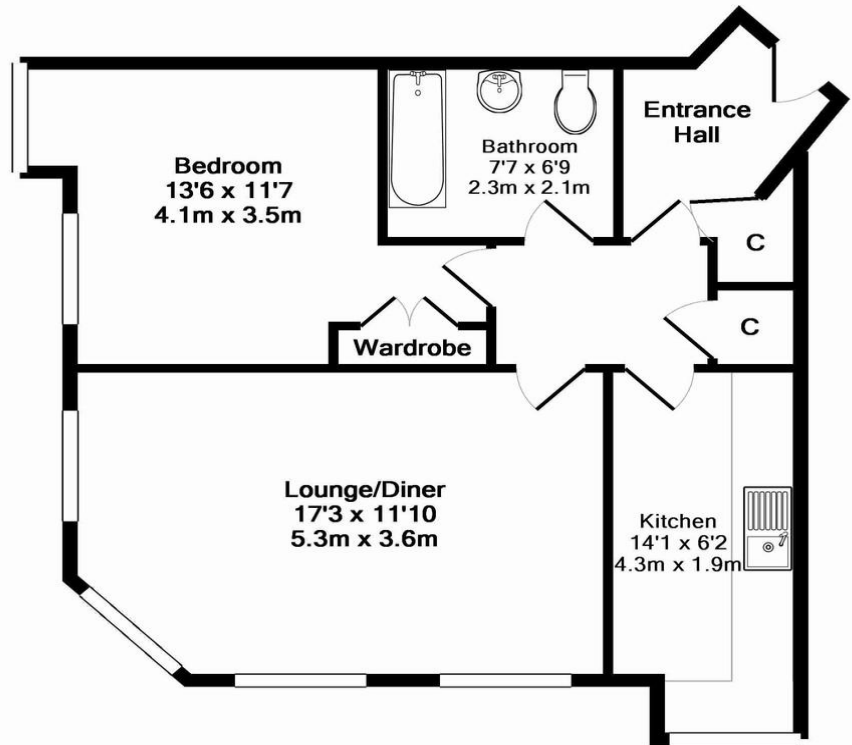


## Gainsborough Court, Homesdale Road | OIEO £260,000

This particularly well presented one bedroom purpose built apartment is situated in an enviable location a short walk from Bromley town centre with it's wide array of shops bars and restaurants and the direct rail services of Bromley South boasting a 15 minute service to London Victoria. Gainsborough Court is a popular development with lifts serving all floors, abundant parking and of note is well run by the management company and in our opinion makes a great first time buy or letting investment. Sold with no onward chain the accommodation comprises a large bright lounge, double bedroom, modern fitted kitchen and family bathroom and although there is scope for one to put their own touch to this property the current owners are motivated to sell. Viewing is strictly via the vendor's sole agents and we advise you book early to avoid disappointment.



- One bedroom
- Purpose built flat
- Well presented throughout
- Ample parking
- Short walk to Bromley South
- Chain Free



**LOUNGE/DINER** 17' 3" x 11' 10"  
(5.26m x 3.61 m)

**KITCHEN** 14' 1" x 6' 2" (4.29m x 1.88m)

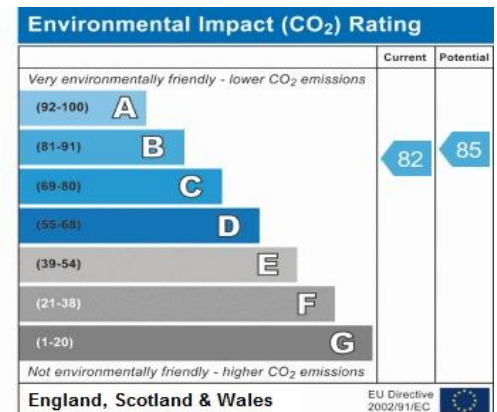
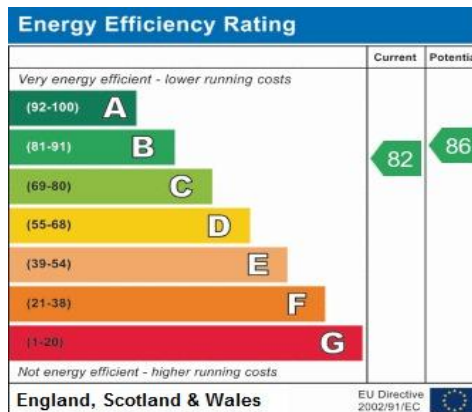
**BEDROOM** 13' 6" x 11' 7" (4.11m x 3.53m)

**BATHROOM** 7' 7" x 6' 9" (2.31m x 2.06m)

Total Approx. Floor Area 562 Sq.Ft. (52.2 Sq.M.)

Whilst every attempt has been made to ensure the accuracy of the floor plan contained here, measurements of doors, windows, rooms and any other items are approximate and no responsibility is taken for any error, omission, or mis-statement. This plan is for illustrative purposes only and should be used as such by any prospective purchaser. The services, systems and appliances shown have not been tested and no guarantee as to their operability or efficiency can be given  
Made with Metropix ©2016

**Directions:** From our Bromley Office, go straight onto Tylney Road and carry on until you reach the mini roundabout. Take the 3rd exit onto Homesdale Road and carry on straight along the main road. Gainsborough Court can be found on the left hand side before you reach Masons Hill.



**NOTICE.** Whilst every effort has been made to ensure the accuracy of these sales details, they are for guidance purposes only and prospective purchasers or lessees are advised to seek their own professional advice as well as to satisfy themselves by inspection or otherwise as to their correctness. Some images have been taken using a wide angle lens. No representation or warranty whatever is made in relation to this property by Coady Phillips or its employees nor do such details form part of any offer or contract.