



Raunstone Close, Ravenstone **£336,000**





YOUR MOVE





Raunstone Close, Ravenstone

£336,000



EPC Grade C

For full EPC please contact the branch

Property Description

****HELP TO BUY PRICE**** Full asking price £420,000. Plot 17. As the largest house style at Queens Court, the Oakthorpe offers plenty of contemporary living space. A large, dual aspect lounge overlooks the rear garden and the dining room features imposing double doors off the hall. The spacious kitchen and breakfast room is complete with a separate utility room, french doors and integrated appliances. Two of the three first floor bedrooms include an en suite shower room, and the main bathroom features a generous bath. With two additional second floor bedrooms and a shower room offering ample space for a growing family, or for overnight guests, the Oakthorpe is a prestigious home with style and charm. For further information please call Your Move on 01530 834474. EPC Grade C.

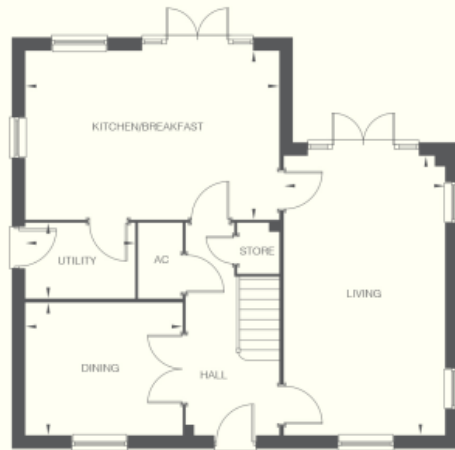
Our View

A great opportunity to purchase a new executive detached in sought after location. With assisted move considered subject to terms and conditions as well as help to buy. On this plot the builders are now including carpets and upto 100% part exchange. Viewing of the development is highly recommended.

Location

Within the boundaries of the National Forest and a designated conservation area since 1973, the village of Ravenstone is a coveted location for Leicestershire living. Less than 15 miles from Leicester and around a ten minute drive from Ashby-de-la-Zouch, Ravenstone offers a secluded village setting with excellent connections to the surrounding area. Queens Court is easily accessible

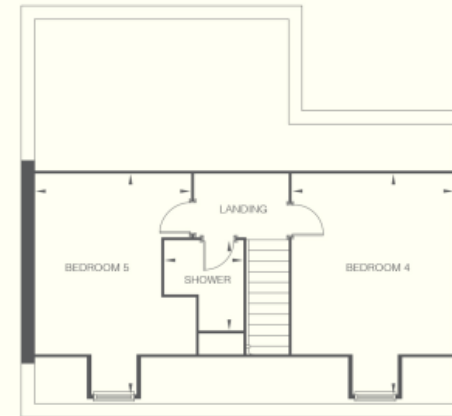
Ground Floor



First Floor



Second Floor



IMPORTANT NOTE TO PURCHASERS: We endeavour to make our sales particulars accurate and reliable, however, they do not constitute or form part of an offer or any contract and none is to be relied upon as statements of representation or fact. The services, systems and appliances listed in this specification have not been tested by us and no guarantee as to their operating ability or efficiency is given. All measurements have been taken as guide to prospective buyers only, and are not precise. Floor plans where included are not to scale and accuracy is not guaranteed. If you require clarification or further information on any points, please contact us, especially if you are travelling some distance to view. Fixtures and fittings other than those mentioned are to be agreed with the seller.

Your Move is a trading name of your-move.co.uk, registered in England at Newcastle House, Albany Court, Newcastle Business Park, Newcastle upon Tyne NE4 7YB (number 01864469).

*Calls may be recorded and/or monitored for training and/or security purposes.

2, Belvoir Road, Coalville, Leicestershire, LE67 3PE

01530 834474 * Coalville@your-move.co.uk

