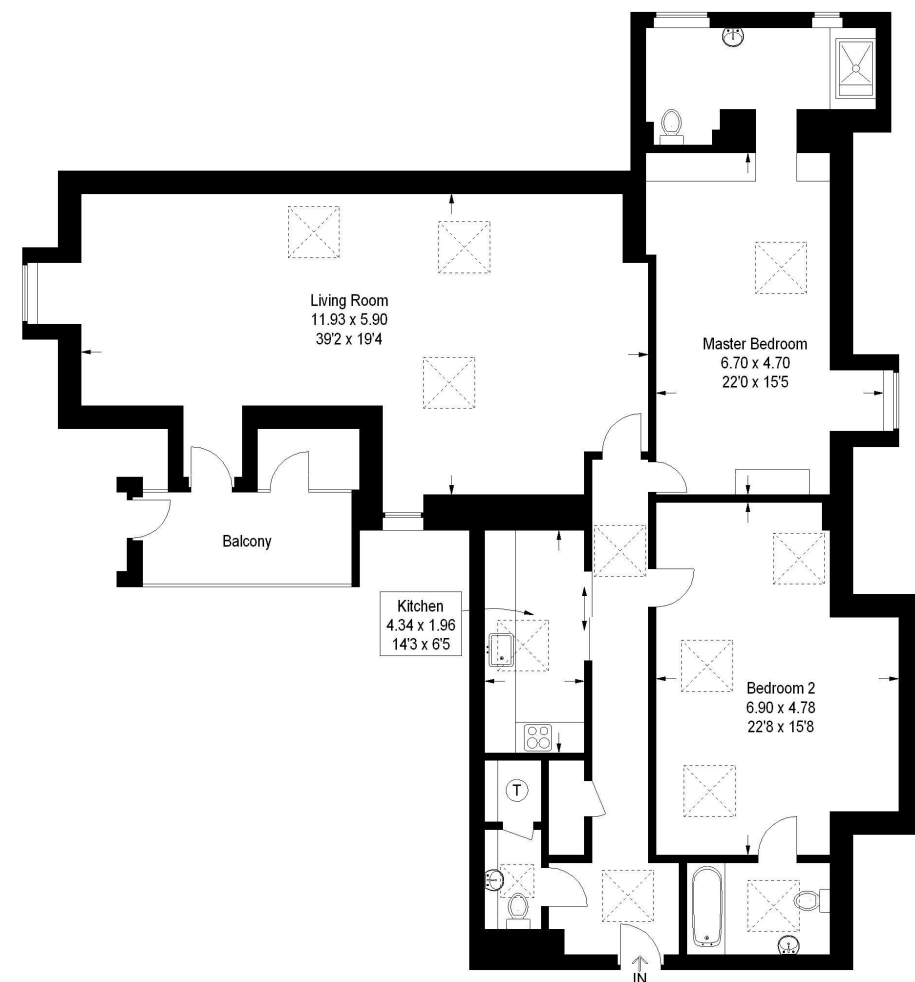


Teddington - 020 8977 8118
35 High Street, Teddington, TW11 8ET

**Normansfield Court,
Langdon Park, Teddington**

Approx. Gross Internal Area = 158.9 sq mt / 1710 sq ft



Third Floor

Featherstone Leigh Ltd

Every attempt is made to assure accuracy, however measurements are approximate and for illustrative purposes only. Not to scale. (150765)



Langdon Park, Teddington, TW11

Featherstone Leigh is proud to offer to market this beautifully restored, and incredibly spacious conversion apartment. It provides the most amazing 39ft living room and it forms part of the Grade II* Listed Normansfield Hospital. Gracefully presented within the top floor loft of this historic conversion, this apartment offers modern versatile living with a feeling of history and character surroundings. The property includes two double bedrooms, each with stunning en-suite bathrooms, the kitchen has all the appliances integrated as you would find in all good quality modern apartments and the spacious living room with French doors leading out to the balcony has amazing views over Langdon Park giving a true feeling of grandeur. EPC = D

Asking Price £995,000 (Leasehold)

For a full EPC Certificate please visit: <https://www.epcregister.com/searchReport.html> and quote report reference number:

These particulars have been prepared in good faith as a general guide as instructed by our clients. We have not carried out a detailed survey nor tested the services, appliances and specific fittings. Room sizes are approximate and are generally taken as maximum measurements and should not be relied on for fitting of carpets or furnishings. Formal notice is also given that all contents, carpeting, curtains, blinds and appliances are deemed removable by our client unless specifically included within these particulars. All properties are offered subject to contract.

www.featherstoneleigh.co.uk

