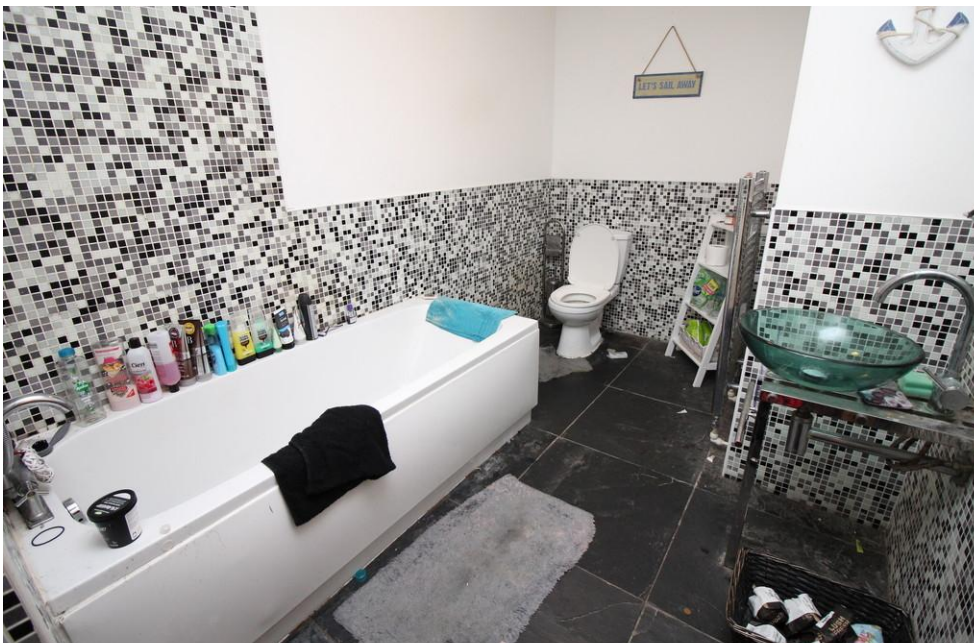




WATTS & CO
PROPERTY DONE PROPERLY



Croft Street

Dewsbury, Wakefield WF13 1AR

Asking Price Of £87,500

Property Features

- First Floor Apartment
- One Bedroom
- Mezzanine Bedroom
- Open Plan Kitchen Living Area
- Dewsbury Town
- Two Reception Rooms
- Bathroom
- Good Commuter Links
- Close To Train Station

Full Description

Watts & Co are pleased to welcome to the market this ONE BEDROOM FIRST FLOOR APARTMENT located in Dewsbury Town Centre. The property has a MEZZANINE BEDROOM, a bathroom, OPEN PLAN living kitchen area and an additional RECEPTION ROOM. The property is CURRENTLY LET at £550 ppm giving this a YIELD OF 7.54%. The property is situated close to the TRAIN STATION which is great for commuting!

LOUNGE

18' 5" x 21' 6" (5.62m x 6.56m)

The open plan kitchen living area briefly comprises of; a gas central heating radiator and a double glazed window facing to the front of the property.

OPEN PLAN KITCHEN LIVING AREA

The open plan kitchen living area briefly comprises of; a fitted kitchen with a range of wall and base units with complimentary work surfaces, a stainless steel sink and drainer unit, splash back tiling, space for an automatic washing machine and an electric oven and hob with cooker hood over.

BEDROOM ONE

18' 6" x 10' 4" (5.64m x 3.16m)

The mezzanine bedroom is currently being used as the tenants sitting room.

SECOND RECEPTION ROOM

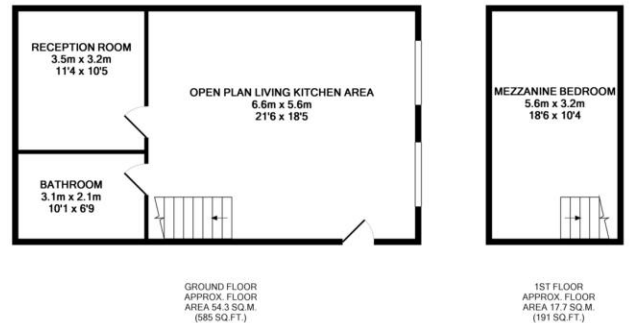
11' 4" x 10' 4" (3.46m x 3.17m)

The second reception room is currently being used as the bedroom and has a gas central heating radiator.

BATHROOM

10' 1" x 6' 9" (3.08m x 2.06m)

The bathroom briefly comprises of; a bath with mixer tap and shower over, WC, wash hand basin, extractor fan, towel radiator, partly tiled and a shaver point.



%epcGraph_c_1_339%

Office 8
Burley Hill Trading
Estate
Leeds
West Yorkshire
LS4 2PL

www.morrison-watts.co.uk
info@watts-co.co.uk
0113 278 5555

Agents Note: Whilst every care has been taken to prepare these sales particulars, they are for guidance purposes only. All measurements are approximate and are for general guidance purposes only and whilst every care has been taken to ensure their accuracy, they should not be relied upon and potential buyers are advised to recheck the measurements