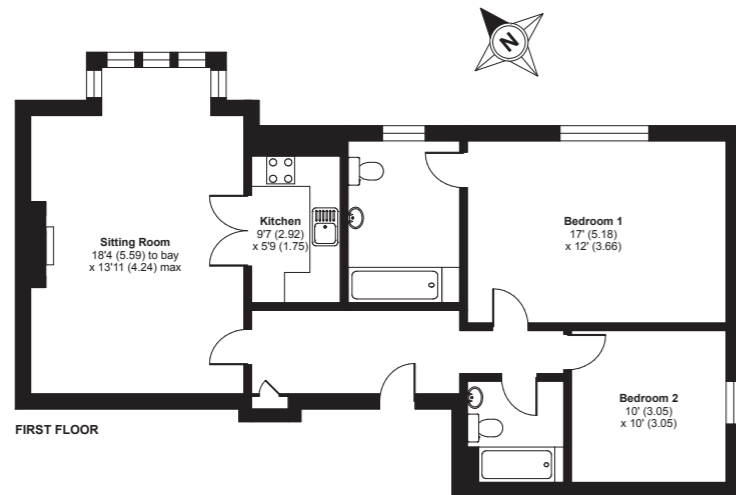


Pittville Circus, Cheltenham, GL52

APPROX. GROSS INTERNAL FLOOR AREA 909 SQ FT 84.4 SQ METRES



Whilst every attempt has been made to ensure the accuracy of the floor plan contained here, measurements of doors, windows and rooms are approximate and no responsibility is taken for any error, omission or misstatement. These plans are for representation purposes only as defined by RICS Code of Measuring Practice and should be used as such by any prospective purchaser. Specifically no guarantee is given on the total square footage of the property if quoted on this plan. Any figure given is for initial guidance only and should not be relied on as a basis of valuation.

Copyright nichecom.co.uk 2017 Produced for Perry Bishop & Chambers REF : 230512

1 Kew Place, Cheltenham, Gloucestershire, GL53
7NG
T: 01242 246980

perrybishop.co.uk

Disclaimer: These particulars should not be relied upon as fact and are not an offer or contract. The seller does not make, nor do we give any warranty. All information should be verified, no survey has been done or testing completed.

5 Priors Lodge

Pitville Circus, Cheltenham, GL52 2PX



An attractive first floor period apartment | Two double bedrooms | 17ft master bedroom
Leafy green outlook | Garage and parking | EPC D

£275,000

Perry Bishop
and Chambers

the agent who keeps you informed

5 Priors Lodge

Pitville Circus, Cheltenham, GL52 2PX



2 Bedrooms



2 Bathrooms



1 Reception

An attractive and spacious two bedroom first floor period apartment with the benefit of both parking and a garage enjoying a leafy and green outlook located close to Pittville Park and the town centre.

Offering a wealth of character features the well-proportioned accommodation gives the feeling of space and light with high ceilings and large windows, in brief comprising a grand, elegant and welcoming communal entrance hall with useful store cupboard, a spacious reception hall, an 18ft drawing room with a box bay window, a fitted kitchen, two double bedrooms, the master being 17ft with an en-suite bathroom and a separate main bathroom.

Further benefits of this charming apartment include a communal garden and gas fired central heating. The property also offers no onward chain.

Directions

Priors Lodge can be found to the north of the town centre by proceeding towards Evesham Road (the racecourse), turning right at the traffic lights at Pittville Lawn, continue over the island at Prestbury Road, through Pittville Circus and onto Pittville Circus Road. The property will then be found some way along on the right hand side.

Services & Tenure

We believe the property is served by mains electricity, gas, water and drainage. The Tenure is Leasehold, The lease term is 999 years from 25th December 2000. Please contact us for further details. The above should be verified by your Solicitor or Surveyor.

Local Authority

Cheltenham Borough Council

