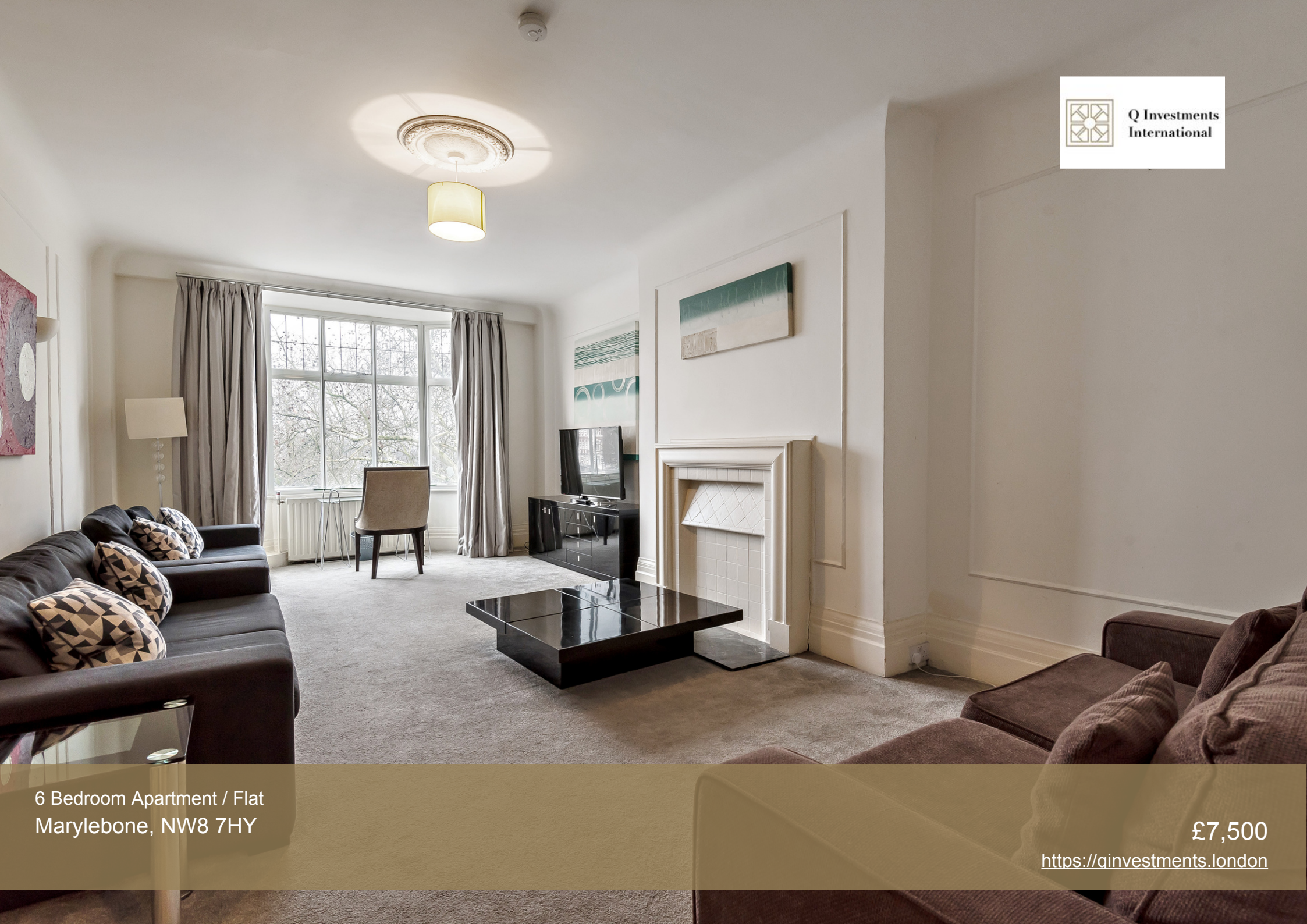




Q Investments
International



6 Bedroom Apartment / Flat
Marylebone, NW8 7HY

£7,500

<https://qinvestments.london>



London, Marylebone, NW8 7HY


A newly refurbished apartment set over 2391 square feet located in a prestigious mansion block offering fabulous views over Regents Park.

The apartment benefits from flexible living space and comprises a reception room, fitted kitchen, dining room or a six bedrooms, two family bathrooms, and a cloakroom.

The apartment offers easy access to the famous Lords Cricket Ground, the open spaces of Regent's Park, along with all the local shops, bars, restaurants located on St John's Wood High Street. With such a fabulous location in the heart of St John's Wood, this apartment offers potential tenants the opportunity to live in a prime location and enjoy many features including portorage, lift access, a dedicated building manager and stunning views over Regent's Park.

For more information call or WhatsApp +447985487333.

Energy Efficiency Rating

	Current	Potential
<i>Very energy efficient - lower running costs</i>		
(92-100) A		
(81-91) B		85
(69-80) C	78	
(55-68) D		
(39-54) E		
(21-38) F		
(1-20) G		
<i>Not energy efficient - higher running costs</i>		
England, Scotland & Wales	EU Directive 2002/91/EC	

Environmental Impact (CO₂) Rating

	Current	Potential
<i>Very environmentally friendly - lower CO₂ emissions</i>		
(92-100) A		
(81-91) B		83
(69-80) C	72	
(55-68) D		
(39-54) E		
(21-38) F		
(1-20) G		
<i>Not environmentally friendly - higher CO₂ emissions</i>		
England, Scotland & Wales	EU Directive 2002/91/EC	