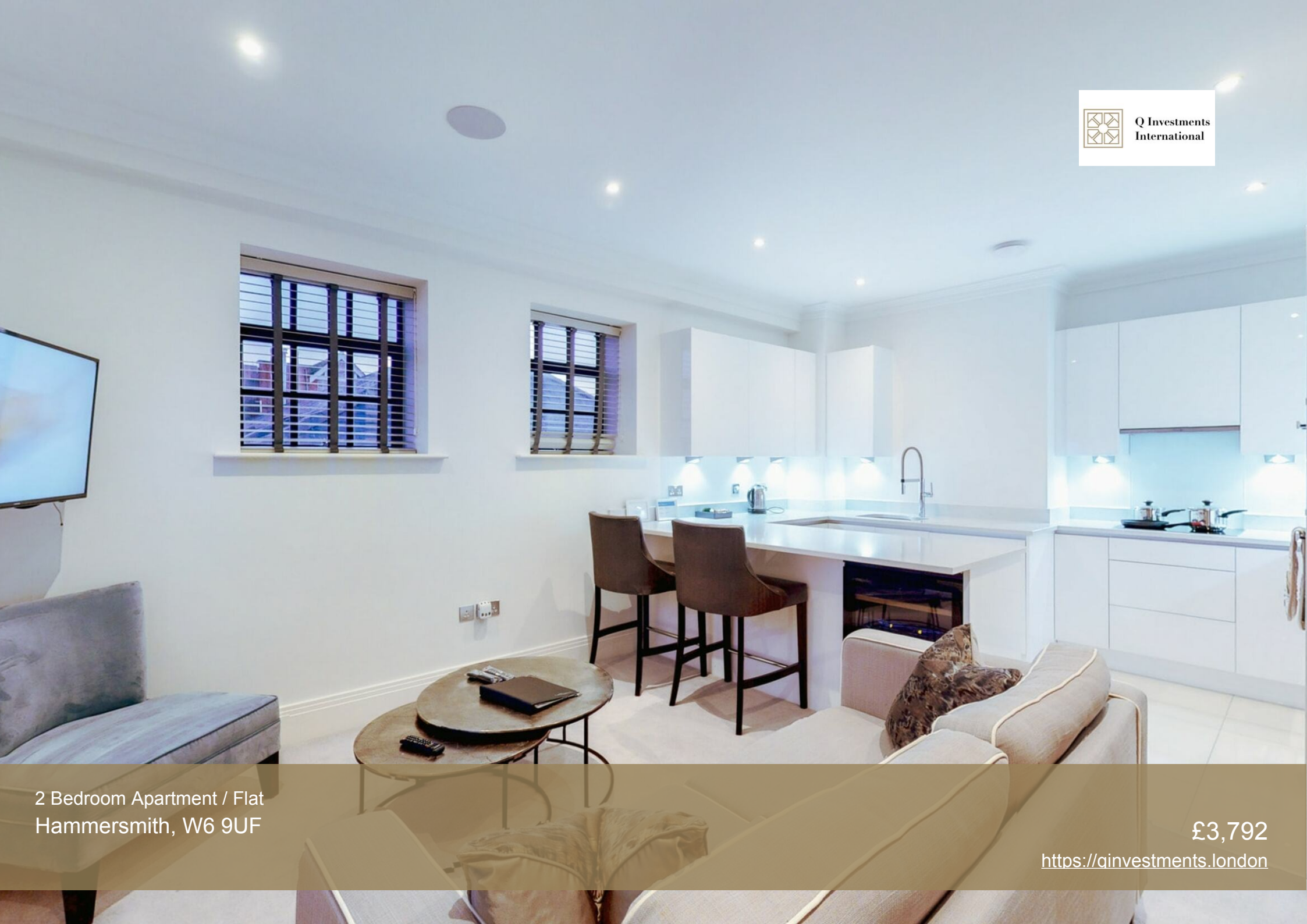




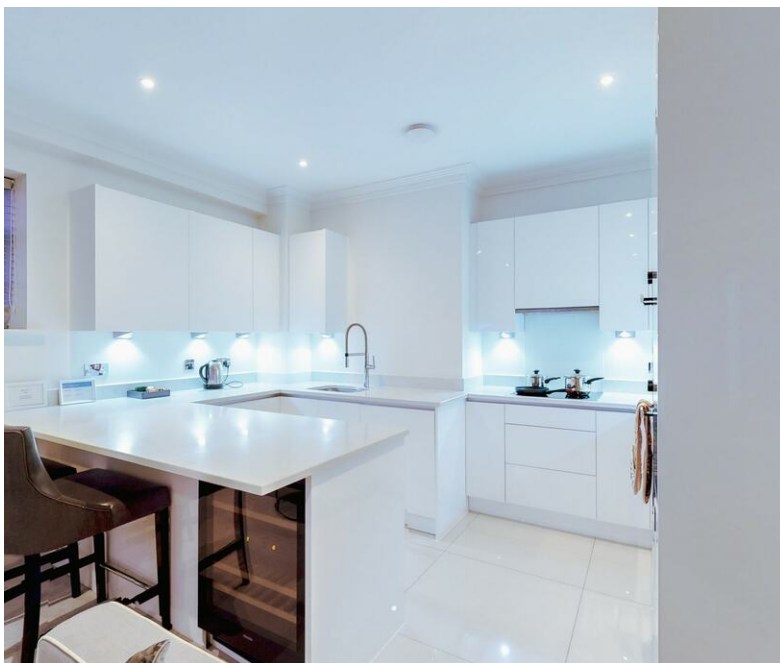
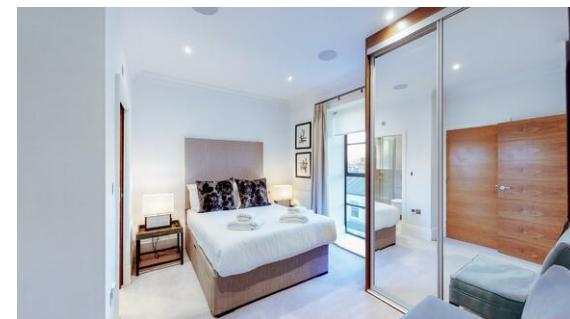
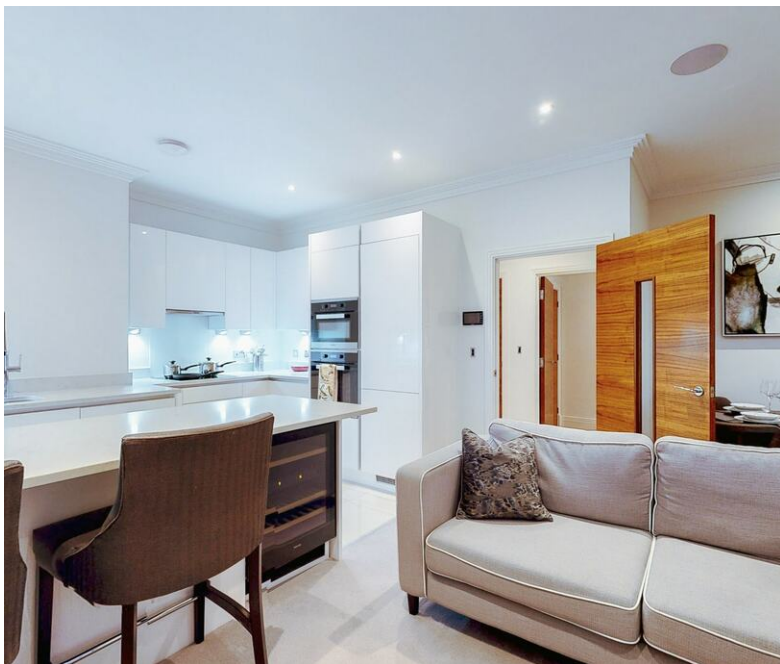
Q Investments
International



2 Bedroom Apartment / Flat
Hammersmith, W6 9UF

£3,792

<https://qinvestments.london>



London, Hammersmith, W6 9UF

Riverside Luxury Loft style Apartment to Rent in London

*Size: 697 sq. ft

*Brand New

*Video Tour available

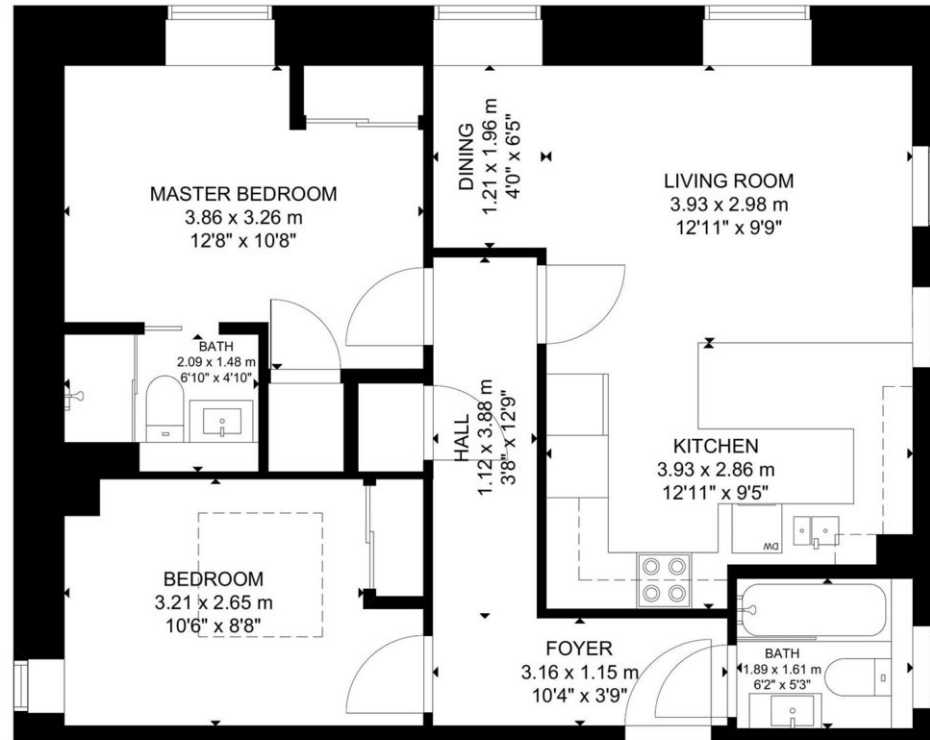
*Virtual Walk Through available

For more information, please call or WhatsApp +447985487333.

Ref. RLPW15

A stunning brand new interior designed two bedroom, two bathroom second floor apartment set within this newly converted, warehouse style, gated development on the River Thames.

The apartment boasts a bright open plan kitchen and living area, master bedroom with en suite shower room and an additional guest bathroom. The fully fitted Metris Kitchen is complete with Miele appliances including an integrated dishwasher, washer/dryer, full height fridge freezer, oven, hob and integrated extractor fan as well as a wine cooler.



THIRD FLOOR

GROSS INTERNAL AREA
TOTAL: 67 m²/722 sq ft
SECOND FLOOR: 67 m²/722 sq ft
SIZE AND DIMENSIONS ARE APPROXIMATE, ACTUAL MAY VARY.

