

Lypiatt Terrace

Cheltenham GL50 2SX





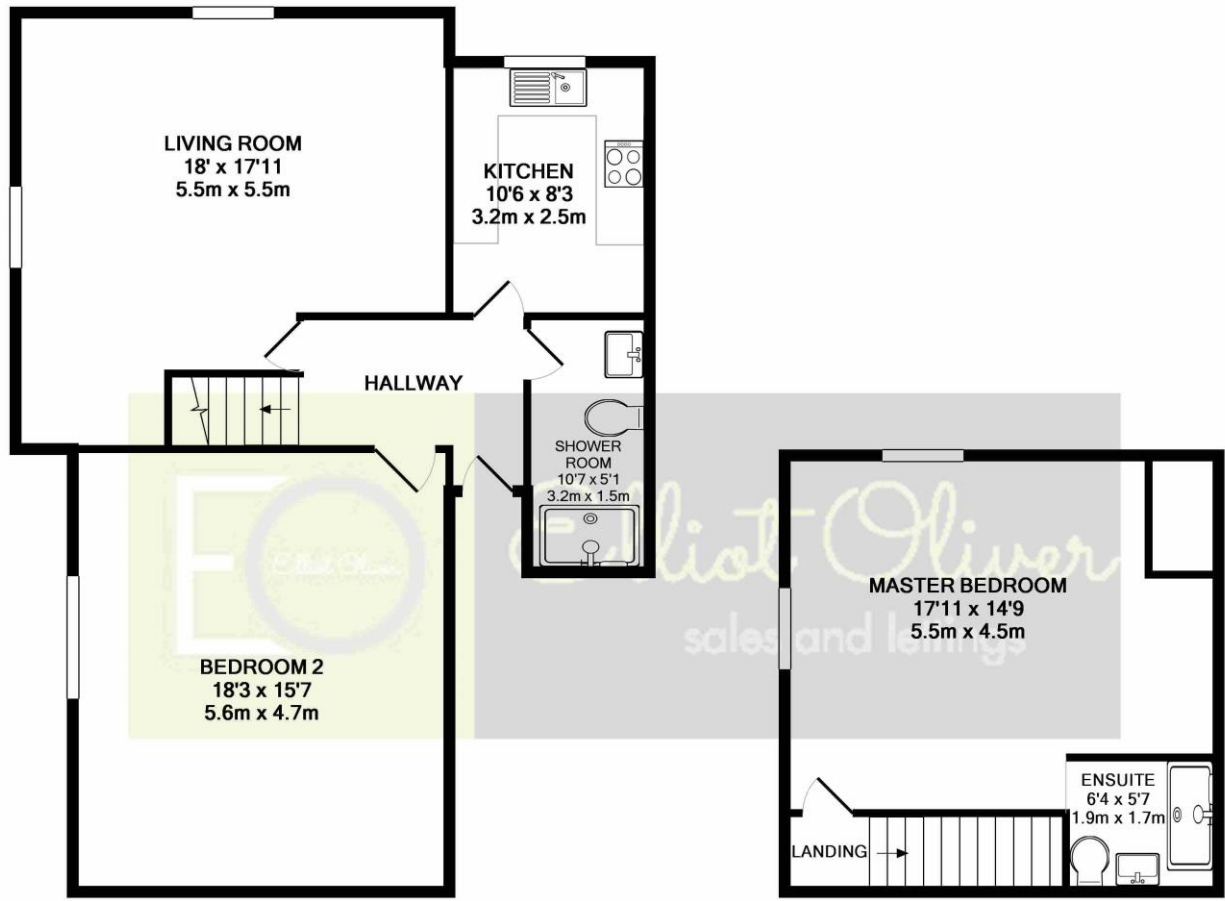
Lypiatt Terrace, Cheltenham GL50 2SX

This is a stunning penthouse apartment, part of a Grade II listed building in the heart of Montpellier and within a short walking distance of central Cheltenham. The apartment has an entrance hall, lounge/dining room, separate kitchen, two large double bedrooms and two bathrooms, one being an en-suite. There is a telecom entry system, broadband and TV points. The private grounds are landscaped and well maintained. Further benefits include original sash windows, communal gardens and lastly off street parking.

999 years left on the lease
Ground rent £250 per year
Service charge £1200 per year
Council Tax Band: C





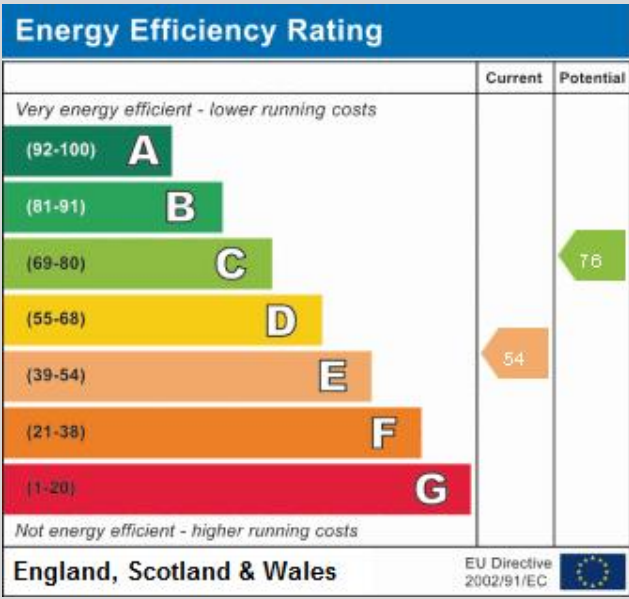


GROUND FLOOR
APPROX. FLOOR
AREA 770 SQ.FT.
(71.6 SQ.M.)

1ST FLOOR
APPROX. FLOOR
AREA 323 SQ.FT.
(30.0 SQ.M.)

TOTAL APPROX. FLOOR AREA 1093 SQ.FT. (101.5 SQ.M.)

Whilst every attempt has been made to ensure the accuracy of the floor plan contained here, measurements of doors, windows, rooms and any other items are approximate and no responsibility is taken for any error, omission, or mis-statement. This plan is for illustrative purposes only and should be used as such by any prospective purchaser. The services, systems and appliances shown have not been tested and no guarantee as to their operability or efficiency can be given
Made with Metropix ©2019



OFFICE
101 Promenade,
Cheltenham,
Gloucestershire, GL50
1NW
info@elliottoliver.co.uk

Agents Note: Whilst every care has been taken to prepare these sales particulars, they are for guidance purposes only. All measurements are approximate and for general guidance purposes only and whilst every care has been taken to ensure their accuracy, they should not be relied upon and potential buyers are advised to recheck the measurements