



Jasper Road, SE19
£475,000

0208 702 9333
pedderproperty.com

pedder



In general

- Raised ground floor
- Industrial-style finish
- Large master bedroom with Juliette balcony
- Central location
- Fitted bedroom storage
- Open-plan kitchen
- No onward chain

In detail

A light and bright two bedroom raised ground floor apartment forming a characterful, centrally located development in Crystal Palace.

This inviting space offers an industrial feel with a contemporary finish and is perfect for those seeking something out of the ordinary.

Brief highlights include solid wood flooring, exposed brickwork, large-shuttered sash windows, a sociable open-plan kitchen to a 21ft reception room, a generous master bedroom with a Juliette balcony, a double walk-in shower, and fitted bedroom storage.

Jasper Road is moments from a wealth of shopping and leisure amenities at the vibrant Crystal Palace Triangle and provides ease of access to both Crystal Palace and Gipsy Hill rail links.

No onward chain.

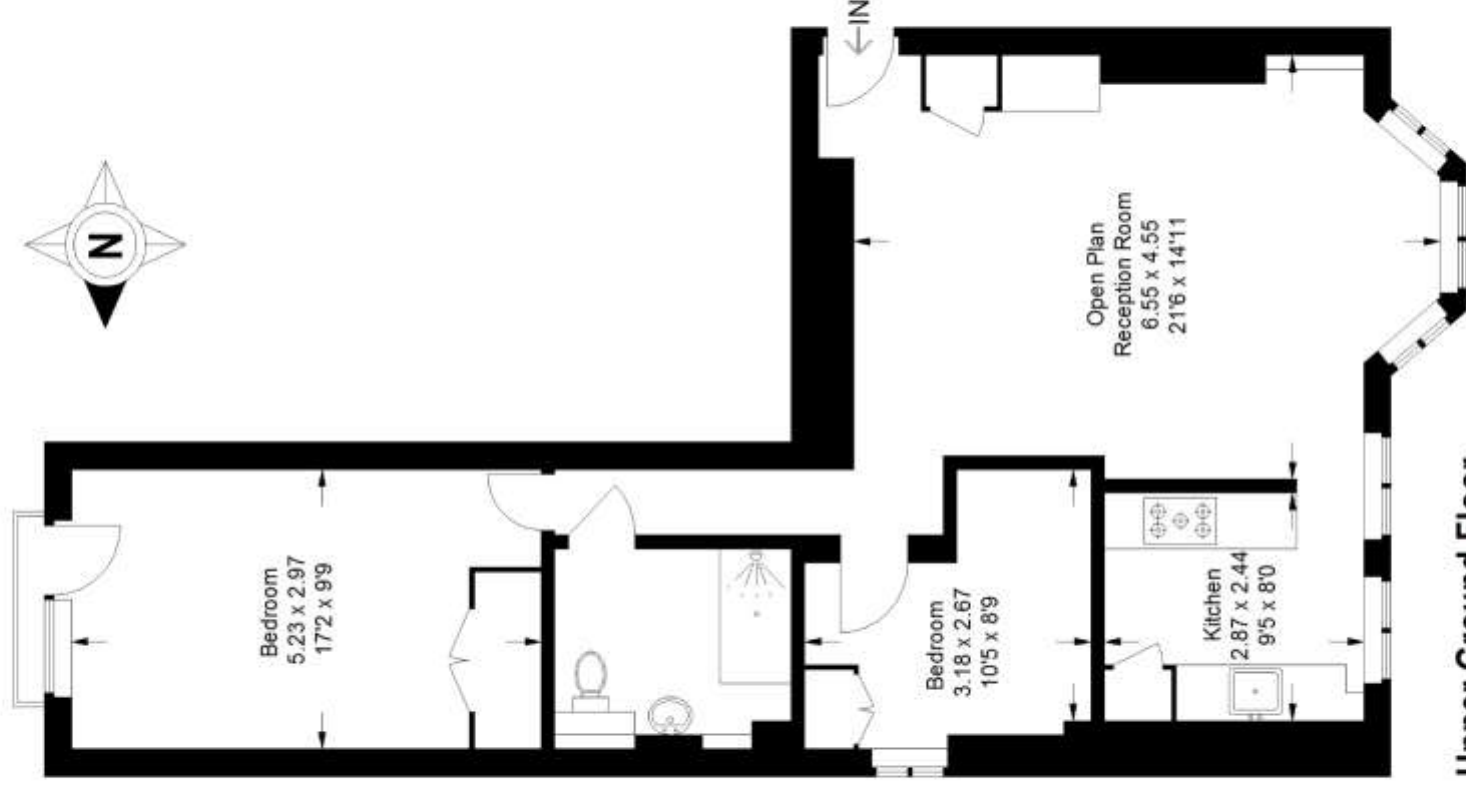
EPC: C | Council Tax Band: D | Lease: 115 years remaining | SC: £1,091.81pa | GR: £375.00



Floorplan

Ranger Mansions, SE19

Approximate Gross Internal Area
72.5 sq m / 780 sq ft



Upper Ground Floor

Copyright www.pedderproperty.com © 2021

These plans are for representation purposes only as defined by RICS - Code of Measuring Practice. Not drawn to Scale. Windows and door openings are approximate. Please check all dimensions, shapes and compass bearings before making any decisions reliant upon them.